



**Some Information about Lane Community College's
Spring 2008 Solar Electric Installation Class**

5/20/2008

Presented by:

Anna E. Scott, Energy and IEQ Analyst, FMP

The idea of this project is to provide electricity from the sun for the Childhood Development Center and Lane Family Connections Buildings at Lane Community College. When it is finished this solar electric (photovoltaic) project will look like a big square lollipop pointed at the sun. In the following pages I've included some information and educational resources for you about the Spring 2008 photovoltaic (PV) installation including example photographs.

The physical installation will be collaboration between the Spring 2008 term Renewable Energy Technician class (College Instruction) and College Operations. College staff as well as local contractors will be involved in the physical installation process.

The project construction work will start on Thursday May 22, 2008 with hole drilling. Next a contractor will put up two poles and pour concrete. One pole will be used this year and one pole will be for a future installation. On Wednesday May 28th, 2008 the Renewable Energy students will start to build the solar rack and mount the panels. Following the student installation electrical workers will be making connections from the solar project with wire that will bring electricity from the sun to the buildings. Finally we will install an educational sign that will help self-guide tours of the installation for our students, staff and the public.

We hope that this project engages people in renewable energy education as well as harvesting clean energy from the sun for many years to come.

CONTENTS

General site map

5 photographs of general and specific site locations

3 examples of similar solar electrical installations

4 website links to basic information about solar electricity

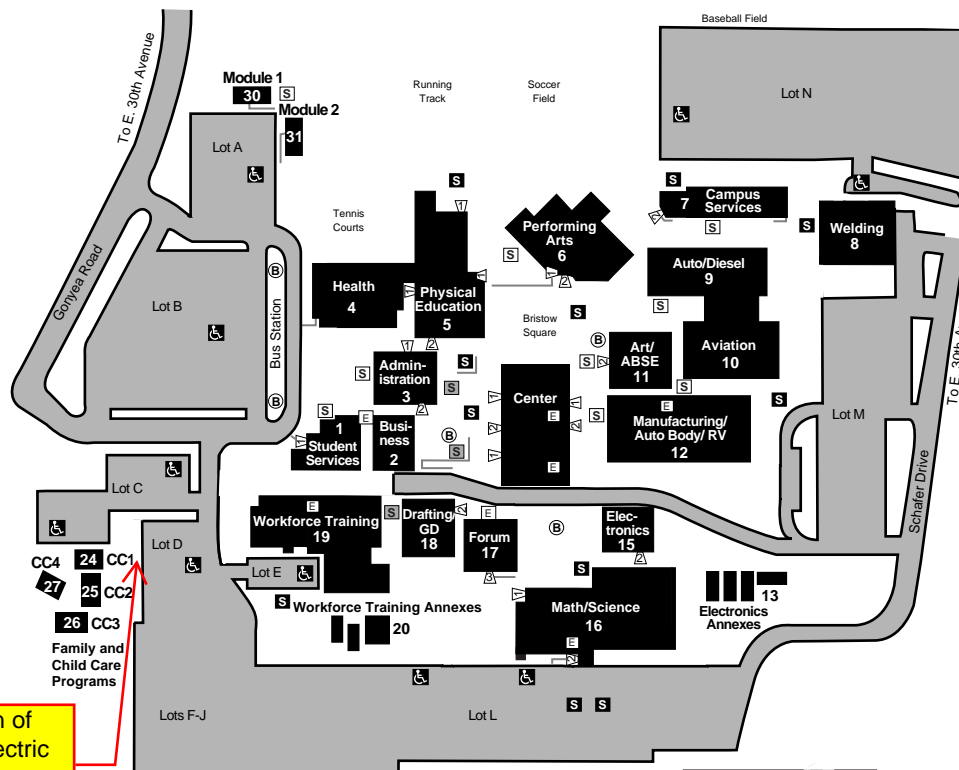
2 website links to educational resources including an example K-12 lesson plan

MAP 1: General site location of Spring 2008 PV Pole Installation

Lane Community College Main Campus

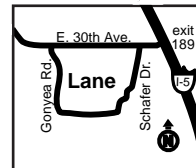
4000 East 30th Avenue ■ Eugene, Oregon 97405 ■ (541) 463-3000

Map revised May 2003



KEY

- Ⓑ Bicycle Parking
- Ⓔ Elevator
- Wheelchair Ramp
- Ⓐ Electric Door—number designates floor
- ♿ Parking with Handicapped Permit
- ☐ Smoking Area, Uncovered / ☐ Covered / ☐ Sheltered (installation in progress)



Proposed Location of
Spring 08 solar electric
class installation.

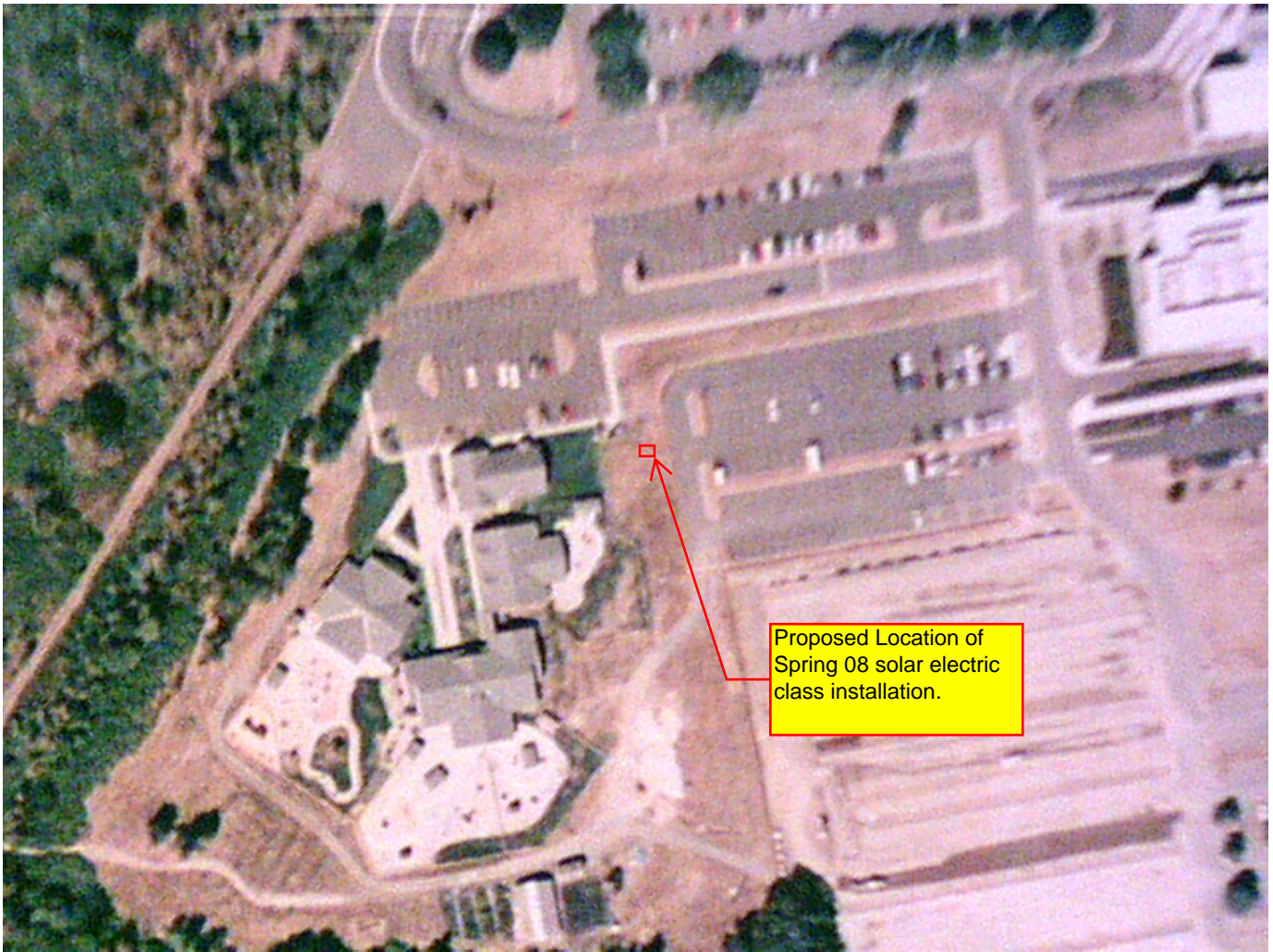


Photo 1: Aerial view showing proposed site placement for Spring 2008 PV Installation.



Photo 2: Looking West

Proposed Location of
Spring 08 solar electric
class installation.



Photo 3: Looking
South West.



Photo 4:
Looking North.

Proposed Location of
Spring 08 solar electric
class installation.



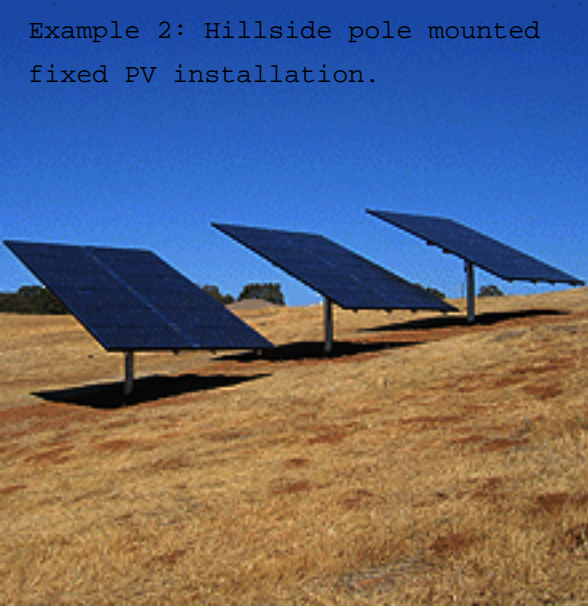
Photo 5: Looking
South East.

Example 1: Parking lot pole mounted fixed PV installation. 2006



Wiley Electronics - Saugerties NY

Example 2: Hillside pole mounted
fixed PV installation.





INFORMATION ABOUT SOLAR ELECTRICITY

The following website links are in order from simple to more sophisticated:

[Solar Energy Education](#)

[EERE: Roofus' Solar and Efficient Home Home Page](#)

[Solar Energy Technologies Program: Tools for Students, Educators and Trainers](#)

[Renewable Resources Basics - Solar Electricity](#)

EDUCATIONAL RESOURCES

Check out the K-12 Lesson Plan “Fun with the Sun”

[Solar Energy Technologies Program: Solar Electricity Educational Resources](#)

Renewable Energy and Energy Management Programs at Lane:

[Lane Community College - Science Division](#)

Thank you for your time and consideration!

For more project information contact:

Anna Scott, Energy Analyst,
Facilities Management and Planning
BLD 7 Room 203a
or email scottae@lanecc.edu.