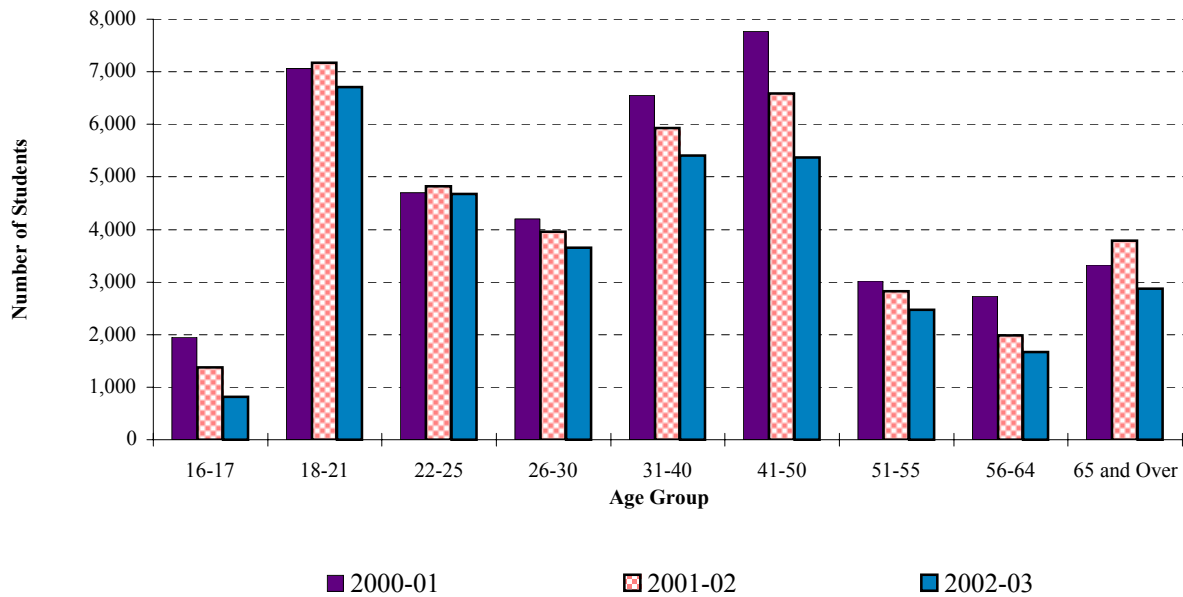


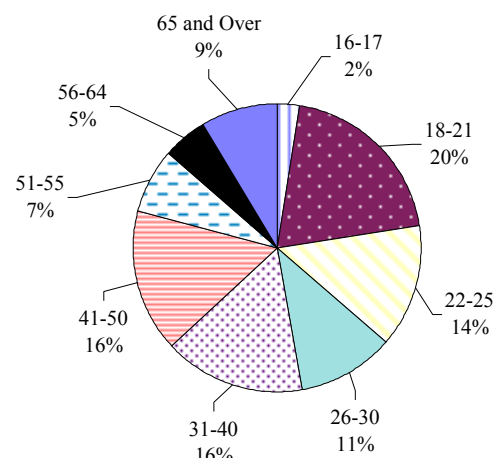
All Students by Age Group

Distribution of Age Groups by Year



	2000-01	2001-02	2002-03
Total Students	43,223	40,099	34,394
Age			
16-17	1,945	1,376	813
18-21	7,058	7,175	6,714
22-25	4,699	4,827	4,673
26-30	4,204	3,958	3,651
31-40	6,550	5,925	5,401
41-50	7,766	6,591	5,365
51-55	3,022	2,819	2,471
56-64	2,733	1,989	1,670
65 and Over	3,326	3,782	2,877
Unknown*	1,920	1,657	759
Average Age	37.7	37.4	36.6
Median Age	35	33	32

Percent of Total 2002-03



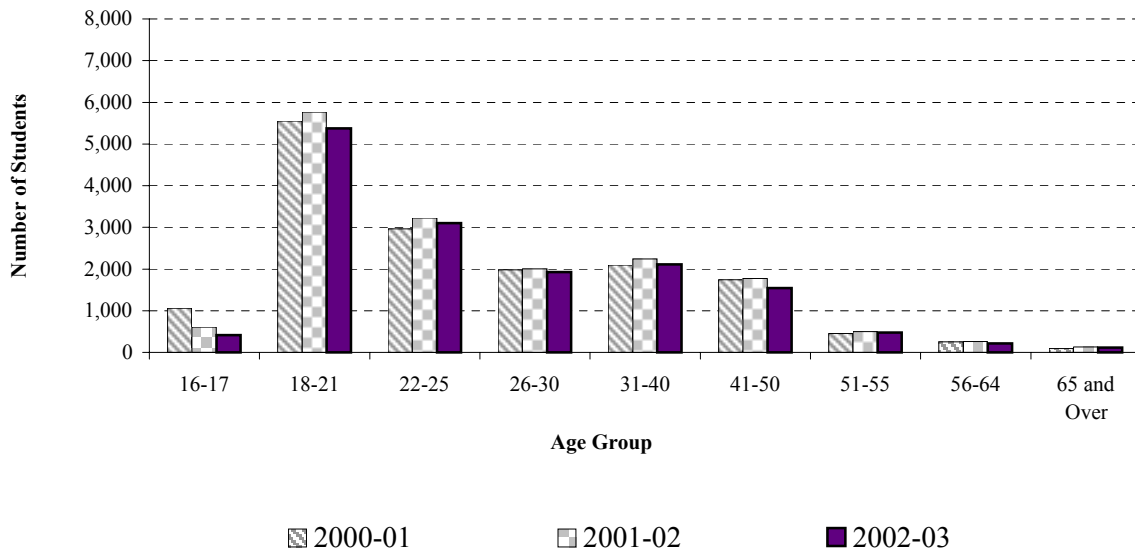
*Unknown includes any students who are under 16.

Source: OCCURS Student Files Unduplicated by Last Term Registered

r:\profile\02-03\hdcnt\0203prof.xls Age

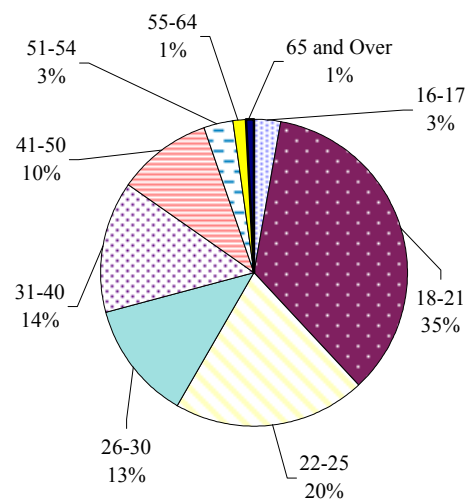
Credit Students by Age Group

Distribution of Age Groups by Year



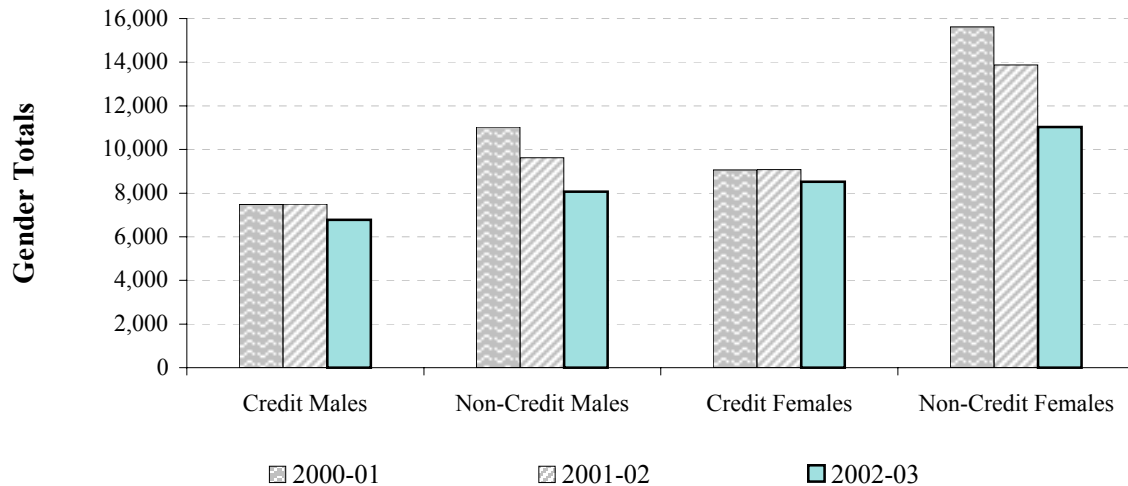
	2000-01	2001-02	2002-03
Credit Students	16,552	16,581	15,299
Age			
16-17	1,059	604	416
18-21	5,549	5,767	5,377
22-25	2,965	3,221	3,102
26-30	1,978	2,006	1,925
31-40	2,094	2,241	2,108
41-50	1,742	1,775	1,544
51-55	450	499	477
56-64	253	258	216
65 and Over	90	131	112
Unknown*	372	79	22
Average Age	27.6	28.0	27.9
Median Age	23	24	24

**Percent of Total
2002-03 Credit Students**



*Unknown includes any students who are under 16.

Gender of All Students



	2000-01		2001-02		2002-03	
Total Headcount	43,223		40,099		34,394	
	#	%	#	%	#	%
Total Males	18,502	42.8%	17,126	42.7%	14,843	43.2%
Total Females	24,685	57.1%	22,950	57.2%	19,542	56.8%
No response	36	0.1%	23	0.1%	9	0.0%

Credit

Males	7,478	45.2%	7,500	45.2%	6,778	44.3%
Females	9,070	54.8%	9,079	54.8%	8,520	55.7%
No response	4	0.0%	2	0.0%	1	0.0%
Total	16,552	100.0%	16,581	100.0%	15,299	100.0%

Non-Credit

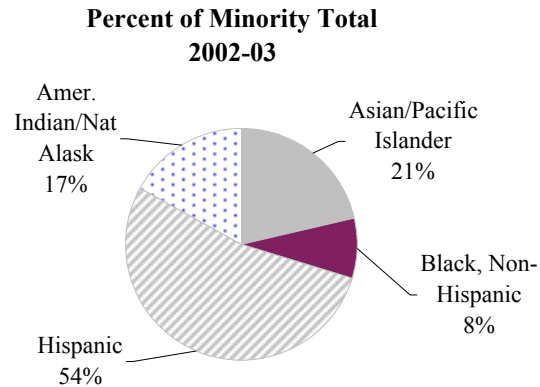
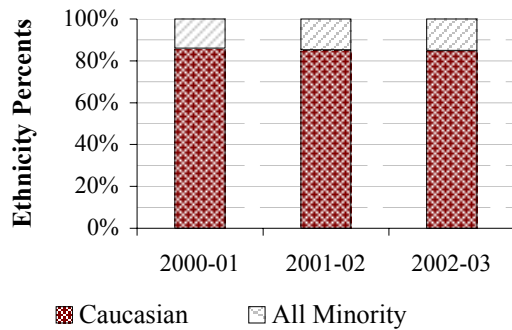
Males	11,024	41.3%	9,626	40.9%	8,065	42.2%
Females	15,615	58.5%	13,871	59.0%	11,022	57.7%
No response	32	0.1%	21	0.1%	8	0.0%
Total	26,671	100.0%	23,518	100.0%	19,095	100.0%

A credit student is a student who took any credit class during the year.

Source: OCCURS Student Files Unduplicated by Last Term Registered

r:\profile\02-03\hdcnt\0203prof.xls Gender

All Students by Ethnicity Status



	2000-01		2001-02		2002-03	
Total Headcount	43,223		40,099		34,394	
	#	% known	#	% known	#	% known
Asian/Pacific Islander	759	2.8%	792	3.0%	748	3.2%
Black, Non-Hispanic	305	1.1%	301	1.1%	295	1.2%
Hispanic	1,967	7.3%	2,148	8.0%	1,881	8.0%
Amer. Indian/Nat Alask	661	2.5%	667	2.5%	593	2.5%
White, Non-Hispanic	22,555	84.0%	22,376	83.3%	19,609	83.1%
International	617		562		475	
Unknown	16,359		13,253		10,793	

Credit

Asian/Pacific Islander	459	3.4%	486	3.5%	427	3.3%
Black, Non-Hispanic	215	1.6%	209	1.5%	186	1.4%
Hispanic	560	4.1%	573	4.1%	577	4.4%
Amer. Indian/Nat Alask	437	3.2%	457	3.3%	432	3.3%
White, Non-Hispanic	11,846	87.6%	12,259	87.7%	11,427	87.6%
International	469		426		329	
Unknown	2,566		2,171		1,921	
	16,552	100.0%	16,581	100.0%	15,299	100.0%

Non-Credit

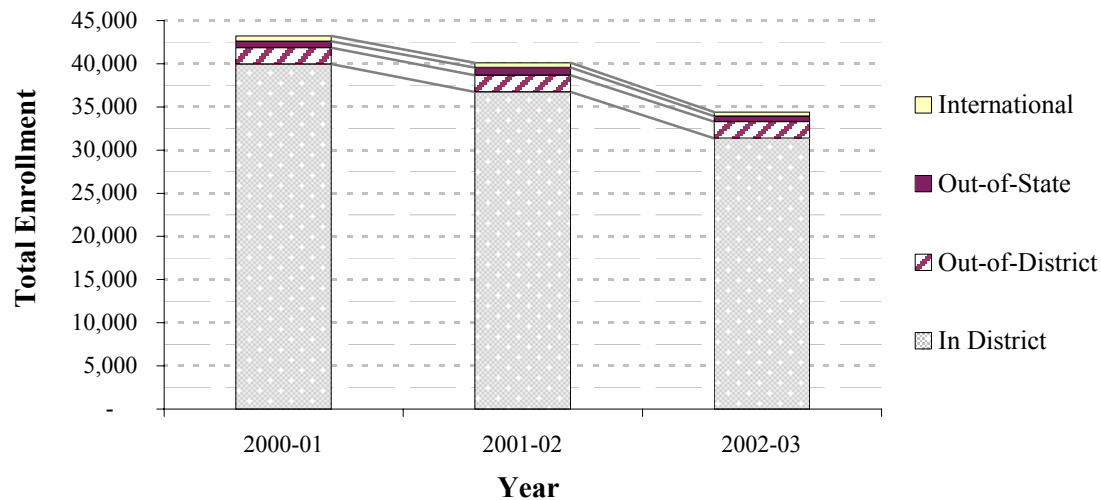
Asian/Pacific Islander	300	2.4%	306	2.5%	321	3.2%
Black, Non-Hispanic	90	0.7%	92	0.7%	109	1.1%
Hispanic	1,407	11.1%	1,575	12.8%	1,304	12.9%
Amer. Indian/Nat Alask	224	1.8%	210	1.7%	161	1.6%
White, Non-Hispanic	10,709	84.1%	10,117	82.3%	8,182	81.2%
International	148		136		146	
Unknown	13,793		11,082		8,872	
	26,671	100.0%	23,518	100.0%	19,095	100.0%

A credit student is a student who took any credit class during the year.

Source: OCCURS Student Files Unduplicated by Last Term Registered

r:\profile\02-03\hdcnt\0203prof.xls Ethnic

Enrollment by Residency Status



	2000-01		2001-02		2002-03	
Total Headcount	43,223		40,099		34,394	
	#	% of Total	#	% of Total	#	% of Total
In District	39,957	92.4%	36,729	91.6%	31,374	91.2%
Out-of-District	1,878	4.3%	1,917	4.8%	1,909	5.6%
Out-of-State	771	1.8%	902	2.2%	636	1.8%
International	617	1.4%	551	1.4%	475	1.4%

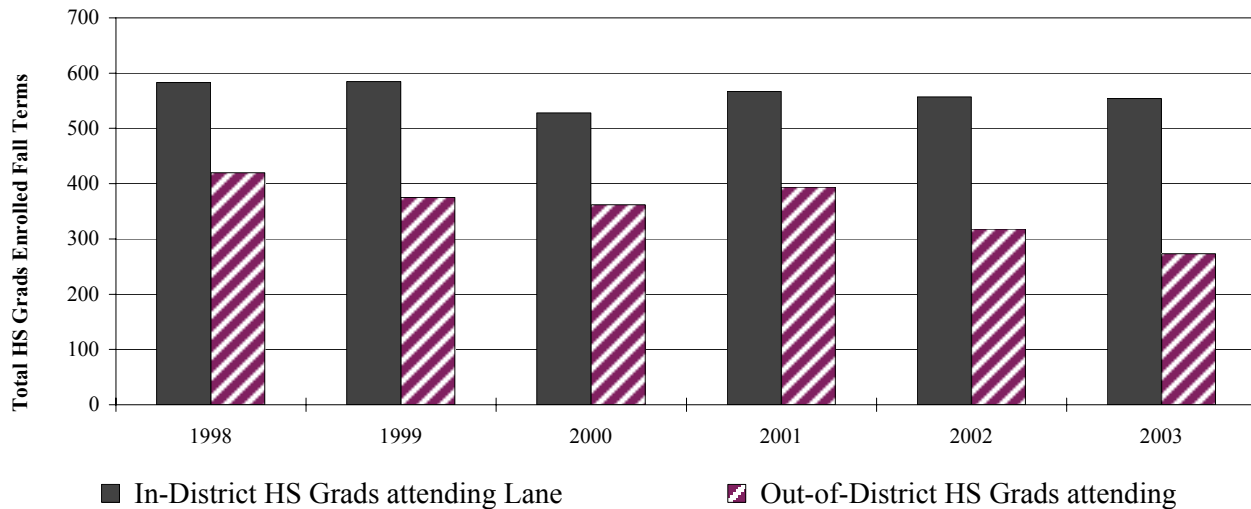
<i>Credit</i>	#	% of Credit	#	% of Credit	#	% of Credit
In District	14,198	85.8%	14,141	85.3%	12,884	84.2%
Out-of-District	1,468	8.9%	1,579	9.5%	1,627	10.6%
Out-of-State	417	2.5%	435	2.6%	459	3.0%
International	469	2.8%	426	2.6%	329	2.2%
	16,552	100.0%	16,581	100.0%	15,299	100.0%

<i>Non-Credit</i>	#	% of Non-Cr	#	% of Non-Cr	#	% of Non-Cr
In District	25,759	96.6%	22,588	96.0%	18,490	96.8%
Out-of-District	410	1.5%	338	1.4%	282	1.5%
Out-of-State	354	1.3%	467	2.0%	177	0.9%
International	148	0.6%	125	0.5%	146	0.8%
	26,671	100.0%	23,518	100.0%	19,095	100.0%

Source: OCCURS Student Files Unduplicated by Last Term Registered

r:\profile\02-03\hdcnt\0203prof.xls Res

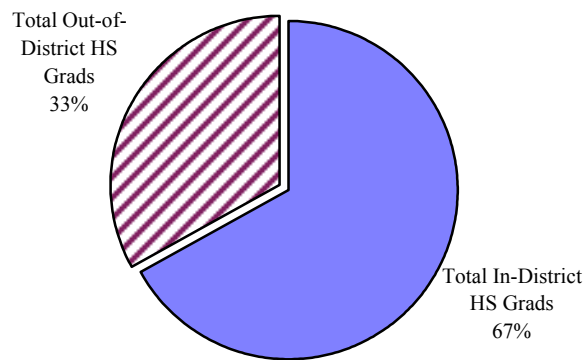
Recent High School Graduates Attending Lane



Recent HS Grads Attending Fall 2003

These data represent a six-year history of the number of June high school graduates who enrolled at Lane in the subsequent fall term. Breakdowns are shown for the categories of In-District (i.e., Lane's service district) grads and Out-of-District HS grads.

Note: GED completers and home schooled students are not included in counts of in-district HS grads attending Lane.

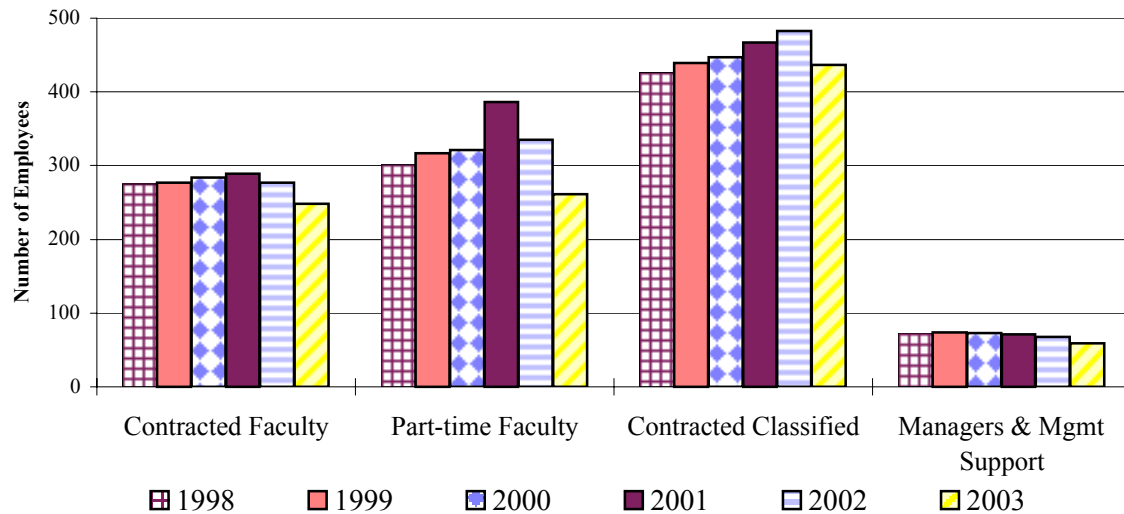


	1998	1999	2000	2001	2002	2003
In-District HS Grads attending Lane	583	585	528	567	557	554
Out-of-District HS Grads attending	420	375	362	394	318	273
% of In-District June HS Grads Attending Lane Fall term	19.9%	19.4%	17.4%	19.2%	17.3%	16.4%
Total HS Grads Attending Lane	1,003	960	890	961	875	827

Source: IRZ1040 and IRZ1042; Oregon Dept. of Education Report of High School Completers -- SF99-00;
ODE file of HS Grads beginning 2000.

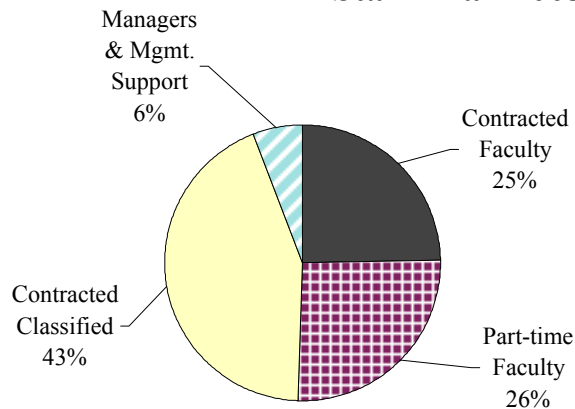
r:\profile\2002-03\hdcnt\hs_grads.xls

Number of Staff Fall Term



The number of staff by group is reported after the 4th week of fall term.

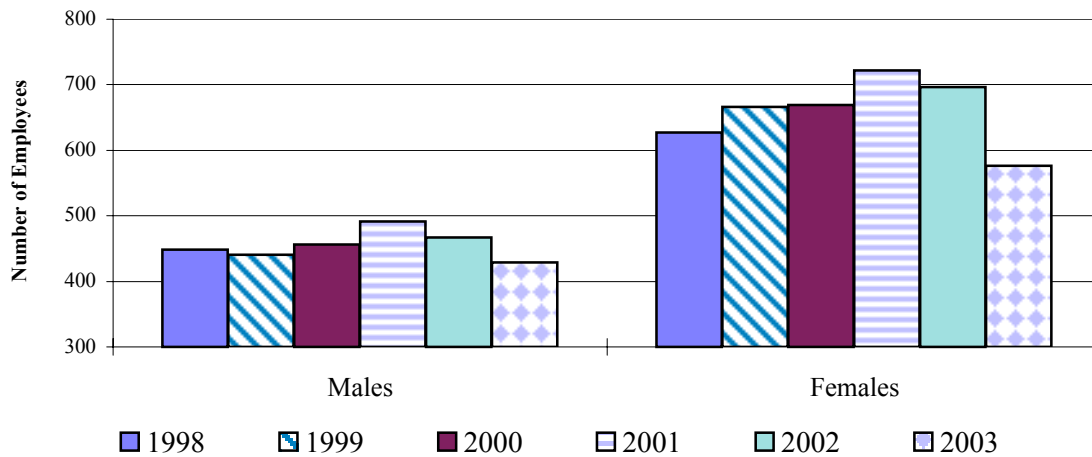
Staff - Fall 2003



	1998	1999	2000	2001	2002	2003
Total Staff	1,075	1,107	1,125	1,213	1,163	1005
Total Faculty	576	594	605	675	612	509
Contracted Faculty	275	277	284	289	277	248
Part-time Faculty	301	317	321	386	335	261
Contracted Classified	426	439	447	467	483	437
Managers & Mgmt. Support	73	74	73	71	68	59

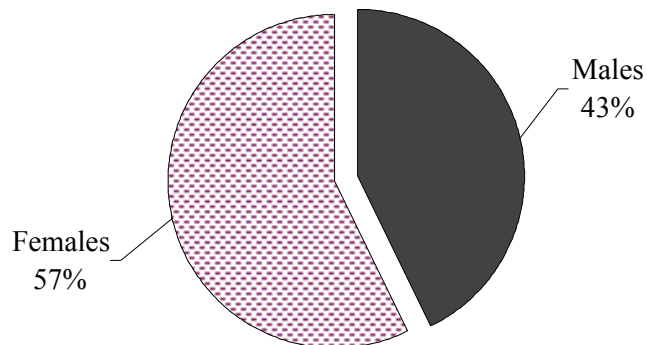
Source: Personnel Services.

Staff by Gender



Staff - Fall 2003

The number of staff by gender is reported after the 4th week of fall term.



	1998	1999	2000	2001	2002	2003
Total Staff *	1,075	1,107	1,125	1,213	1,163	1,005
Males	448	441	456	491	467	429
Males as a Percent of Total	41.7%	39.8%	40.5%	40.5%	40.2%	42.7%
Females	627	666	669	722	696	576
Females as a Percent of Total	58.3%	60.2%	59.5%	59.5%	59.8%	57.3%

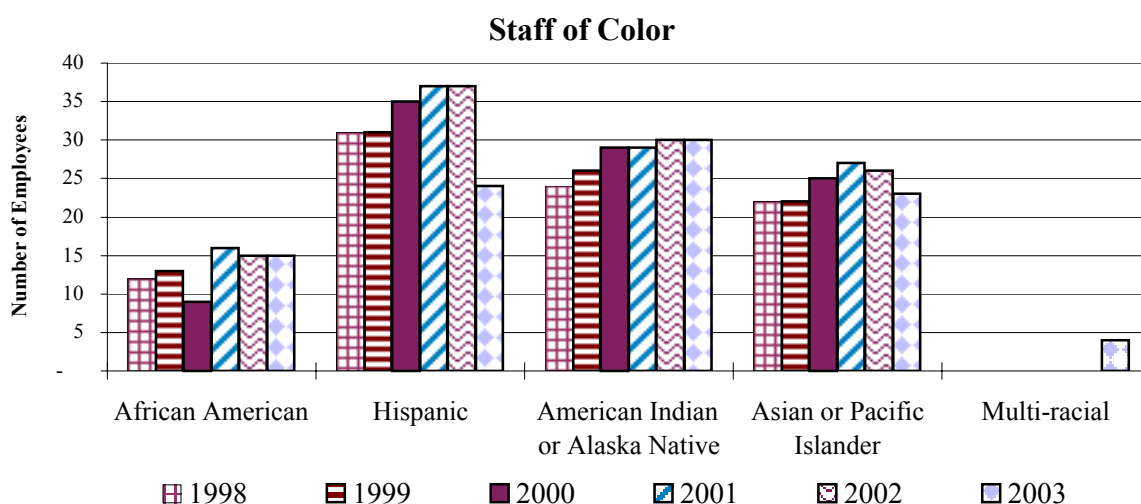
* Total staff includes: contracted faculty, contracted classified, managers, part-time credit faculty, and management support.

Source: Human Resources.

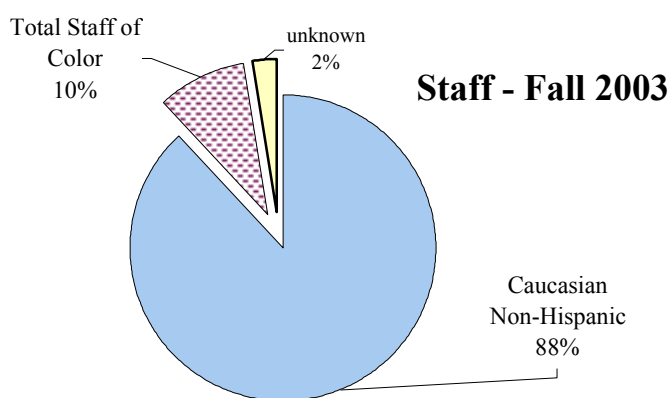
Institutional Research, Assessment & Planning

r:\profile\2002-03\hdcnt\staff_gn.xls

Staff by Ethnicity Status



The number of staff by group is reported after the 4th week of fall term. Ethnicity status is self-reported.



	1998	1999	2000	2001	2002	2003
Total Staff * (fall terms)	1,075	1,107	1,125	1,213	1,163	1,005
Caucasian Non-Hispanic	954	994	995	1,050	1,021	884
Total Staff of Color	89	92	98	109	108	96
African American	12	13	9	16	15	15
Hispanic	31	31	35	37	37	24
American Indian or Alaska Native	24	26	29	29	30	30
Asian or Pacific Islander	22	22	25	27	26	23
Multi-racial						4
unknown ethnicity	32	21	32	54	34	25

* Total staff includes: contracted faculty, part-time credit faculty, contracted classified, managers, and management support.

Source: IPEDS Fall Staff Surveys and Personnel Services queries.