

# The Strategic Plan

## Vision

Transforming lives through learning

## Mission

Lane is a learning-centered community college that provides affordable, quality, lifelong educational opportunities that include:

- Professional technical and lower division college transfer programs
- Employee skill upgrading, business development and career enhancement
- Foundational academic, language and life skills development
- Lifelong personal development and enrichment, and
- Cultural and community services

## Core Values

### **Learning**

- Work together to create a learning-centered environment
- Recognize and respect the unique needs and potential of each learner
- Foster a culture of achievement in a caring community

### **Diversity**

- Welcome, value and promote diversity among staff, students and our community
- Cultivate a respectful, inclusive and accessible working and learning environment
- Work effectively in different cultural contexts to serve the educational and linguistic needs of a diverse community
- Develop capacity to understand issues of difference, power and privilege

### **Innovation**

- Support creativity, experimentation, and institutional transformation
- Respond to environmental, technological and demographic changes
- Anticipate and respond to internal and external challenges in a timely manner
- Act courageously, deliberately and systematically in relation to change

### **Collaboration and Partnership**

- Promote meaningful participation in shared governance
- Encourage and expand partnerships with organizations and groups in our community

### **Integrity**

- Foster an environment of respect, fairness, honesty and openness
- Promote responsible stewardship of resources and public trust

### **Accessibility**

- Strategically grow learning opportunities
- Minimize financial, geographical, environmental, social, linguistic and cultural barriers to learning

# Strategic Directions

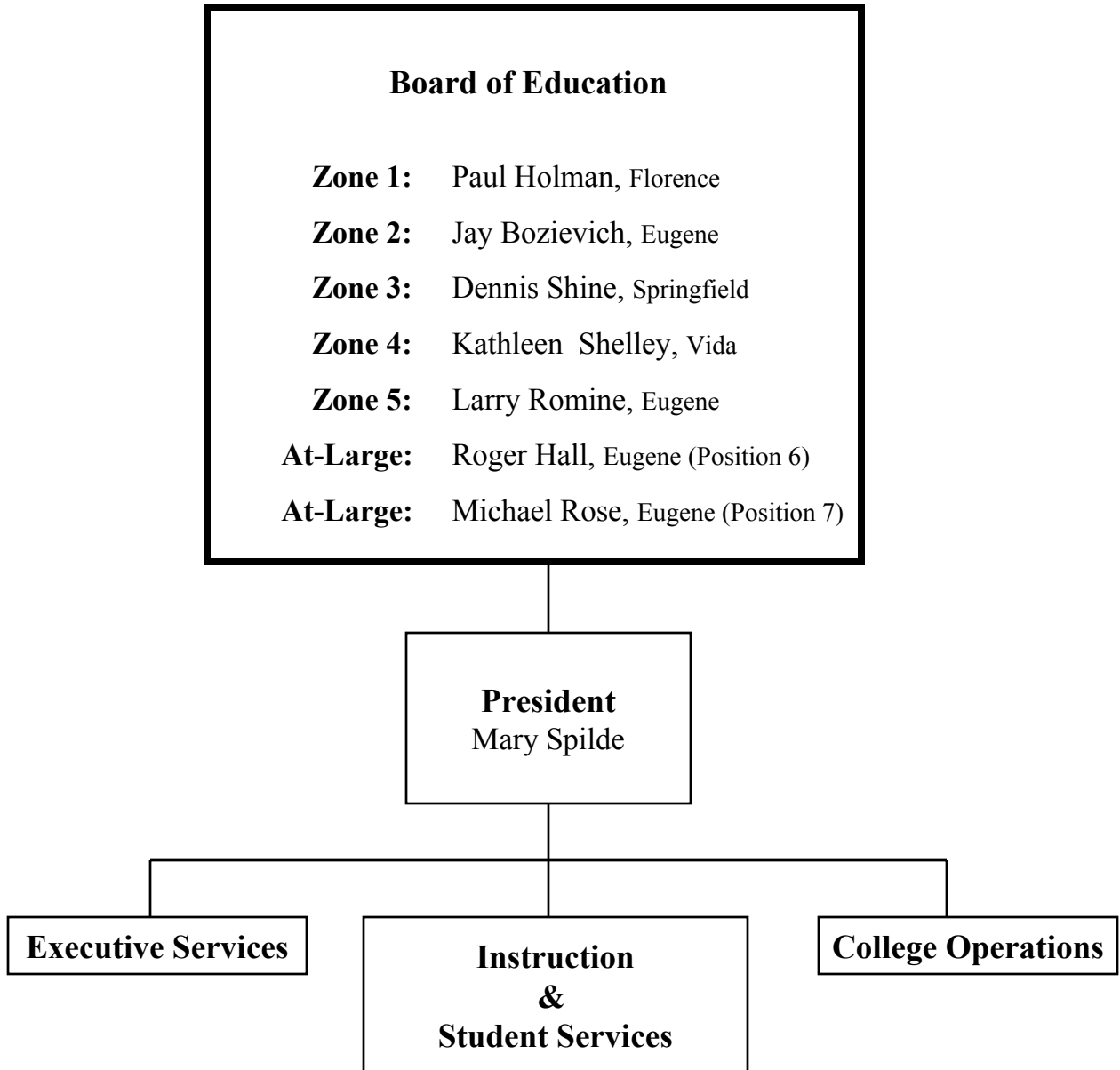
Continue on the journey to become a learning college by placing students and their learning at the heart of what we do, and creating conditions where everyone can do their best work.

- Achieve Financial Stability
- Enhance College Climate
  - Human resource systems
  - Student retention
  - Relationships
- Build Organizational Infrastructure
  - Accreditation: self-study
  - Lane Administrative Systems Renewal (LASR)
  - Mainstream innovation
- Implement Business, Workforce Development and Extended Learning Reorganization
  - Bring the Center for Meeting and Learning to profitability
  - Reinvigorate contract training and linking with Continuing Education

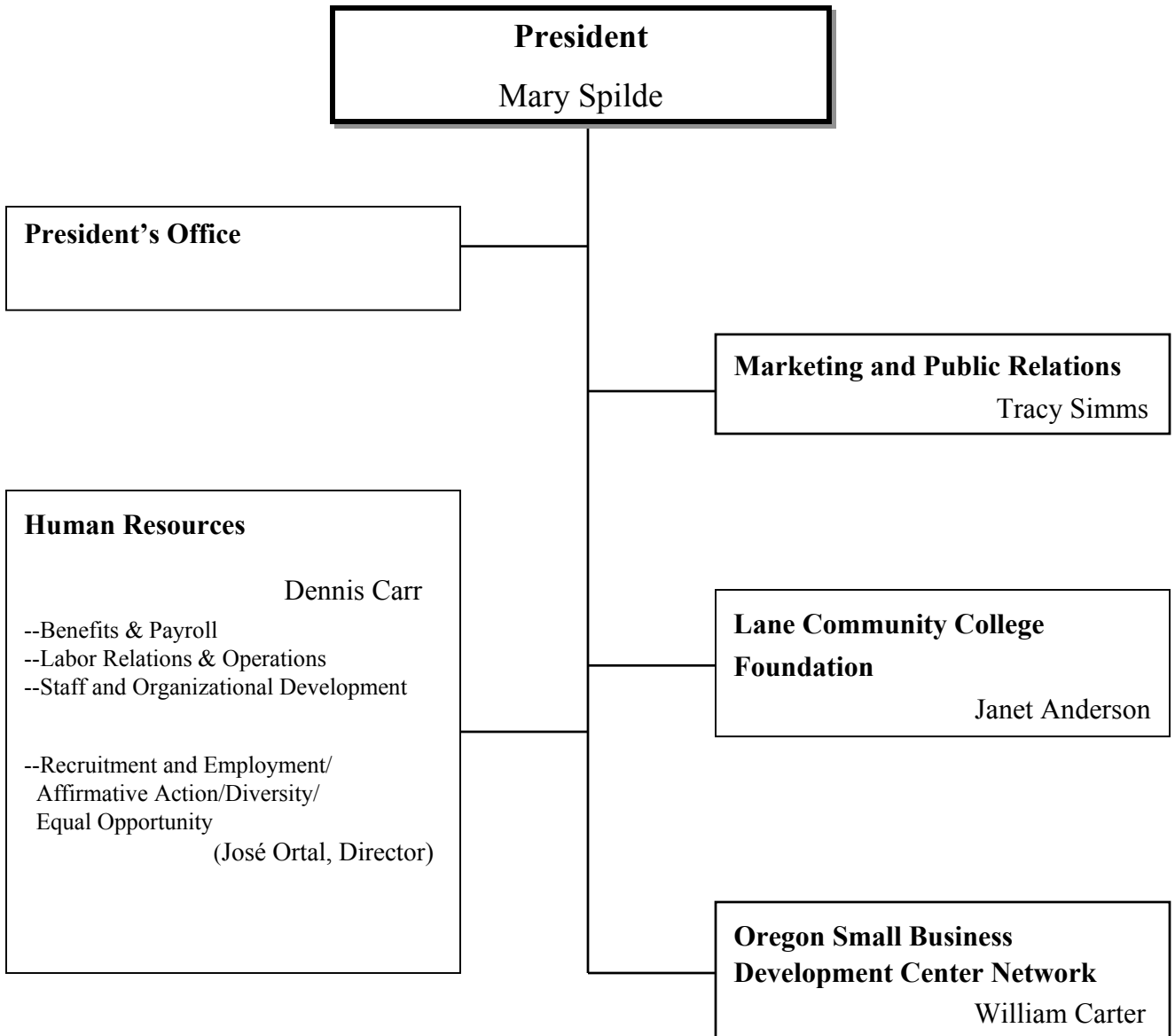
For more information about Lane's Strategic Plan, please visit the website at:  
<http://www.lanecc.edu/research/strplan2003.htm>

# Lane Community College Organization Chart

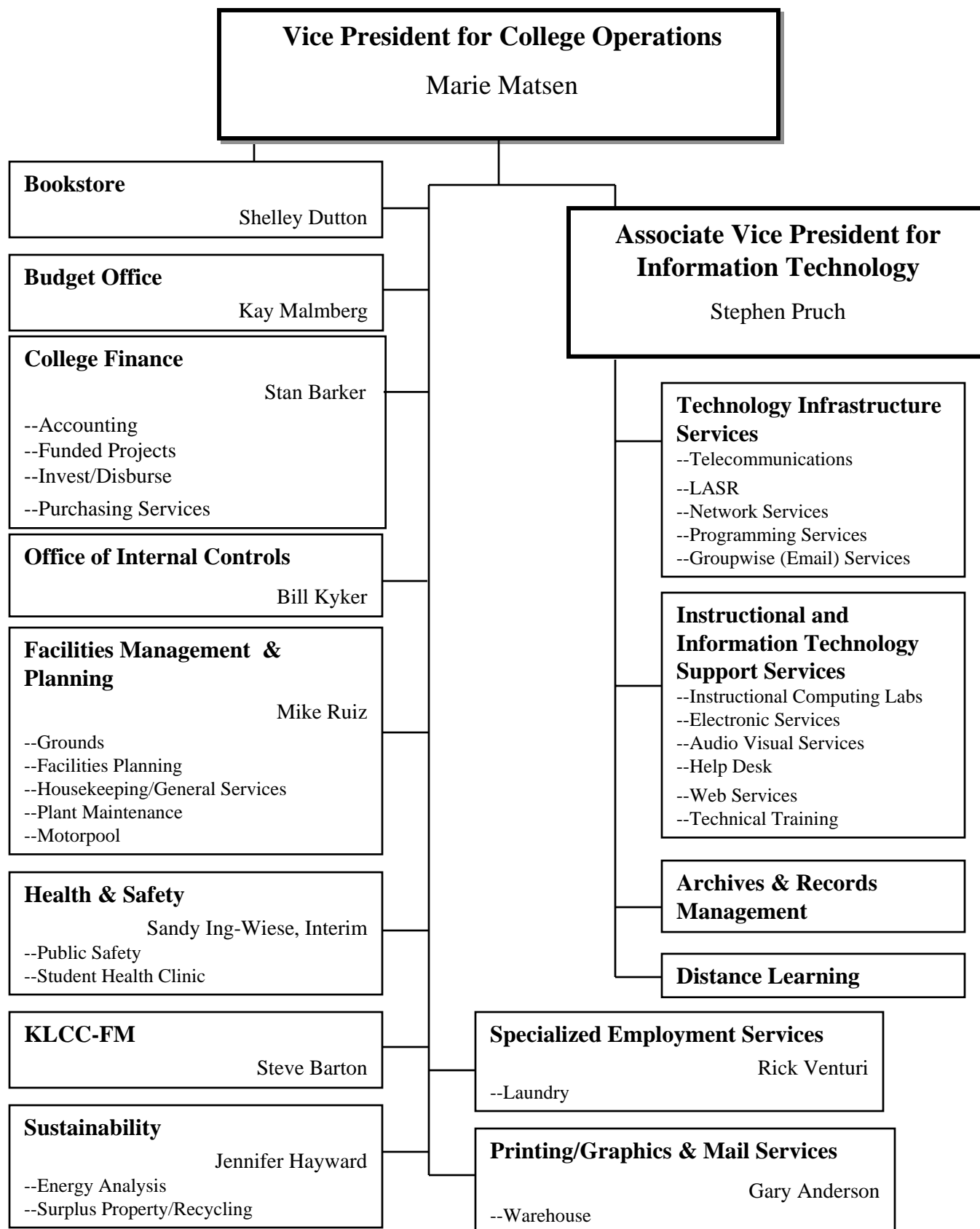
(as of June 2004)



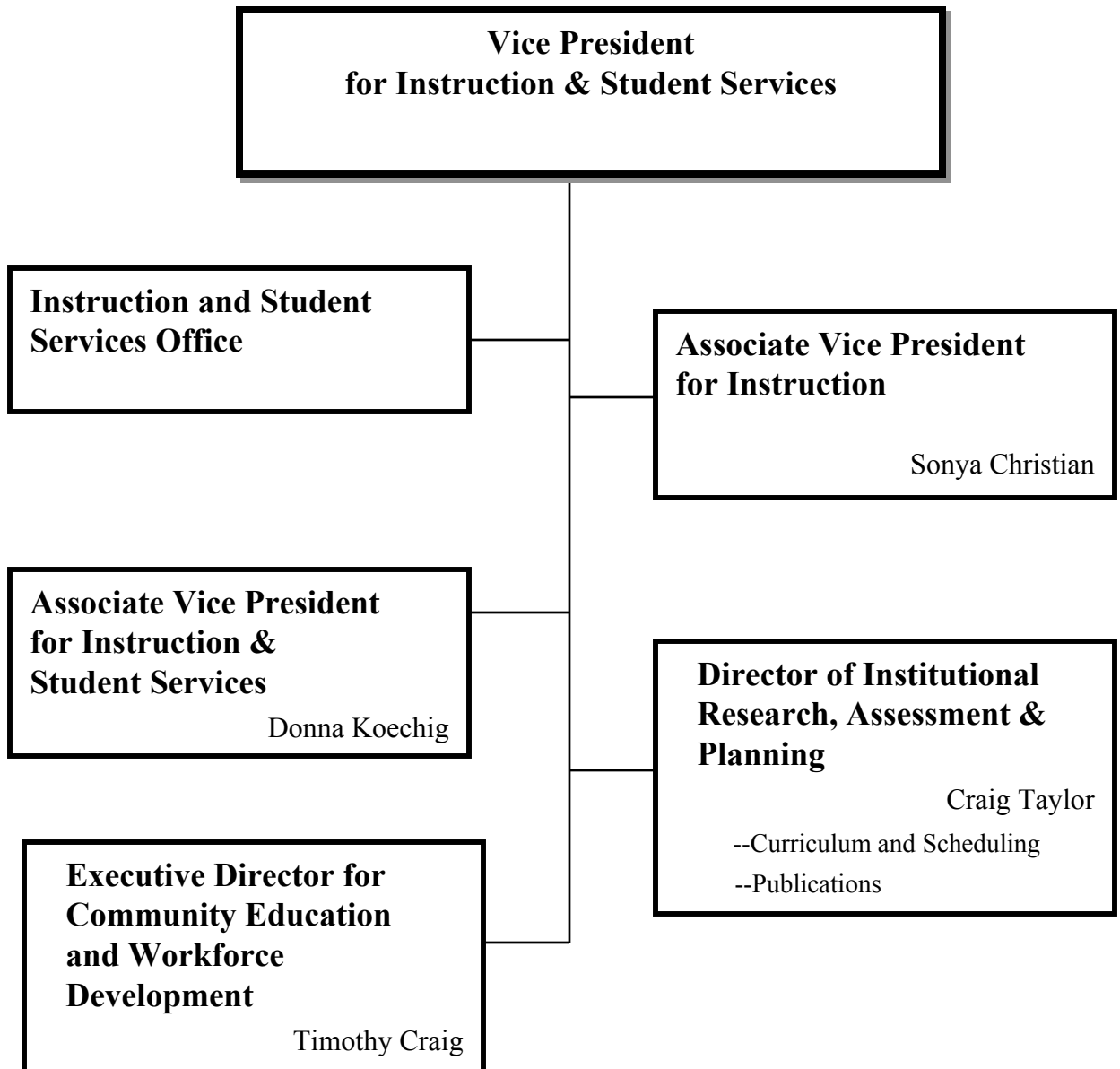
## Executive Services



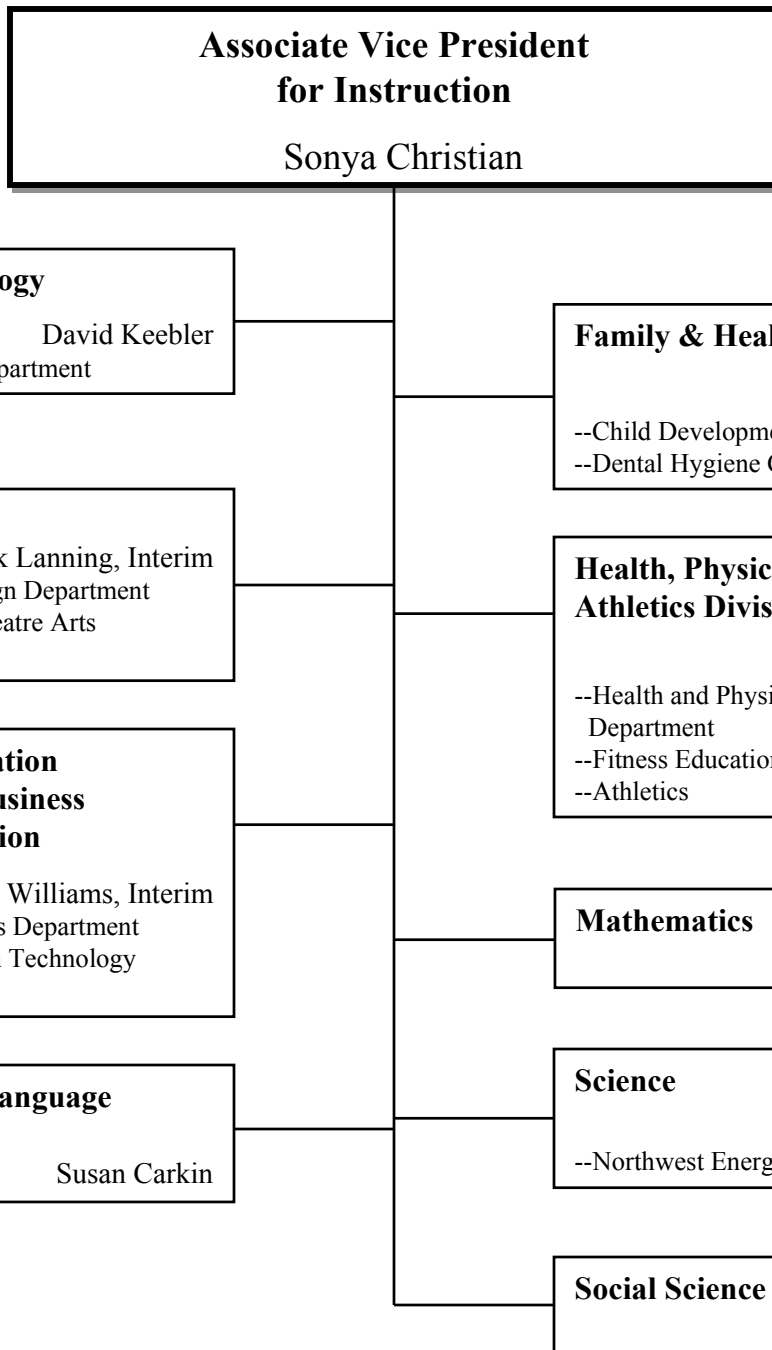
## College Operations



# Instruction & Student Services



# Instruction & Student Services



# Instruction & Student Services

## Associate Vice President for Instruction & Student Services

Donna Koechig

### Center for Learning Advancement

John Miller

- Academic Learning Skills
- English as a Second Language/  
International ESL
- Tutoring Services

Dawn DeWolff

- Adult Basic & Secondary Education
- Adult Skills Development
- Adult Basic Skills Development
- General Education Development
- Literacy

### Cooperative Education

Andrea Newton

- Apprenticeship
- College Now

### Counseling Development

Dan Timberlake  
(Betty Hosokawa)

- Career and Employment Services
- Counseling
- Human Development Department
  - Community Center for Family  
Counseling
- Substance Abuse Prevention
- Testing Services  
(Chris Gilbert, Director)
- TRIO Learning Center  
(Mary Parthemer, Director)

### Disability Services

Nancy Hart

### Enrollment Services

Helen Garrett

- High School /Community Relations
- International Admissions
- Operations
- Students First! Center
- Student Records
- Veterans

### Library

Nadine Williams

### Student Financial Services

Bert Logan

- Financial Aid
- Sponsored Accounts and Scholarships
- Student Accounts

### Student Life & Leadership Development

Barbara Delansky

- ASLCC
- ASLCC Child Care Co-op
- Lane Family Connections
- Multicultural Center
  - International Student Program
  - Native American Student Program
  - Rites of Passage Program
- Student Activities, Clubs and  
Organizations

### The Torch

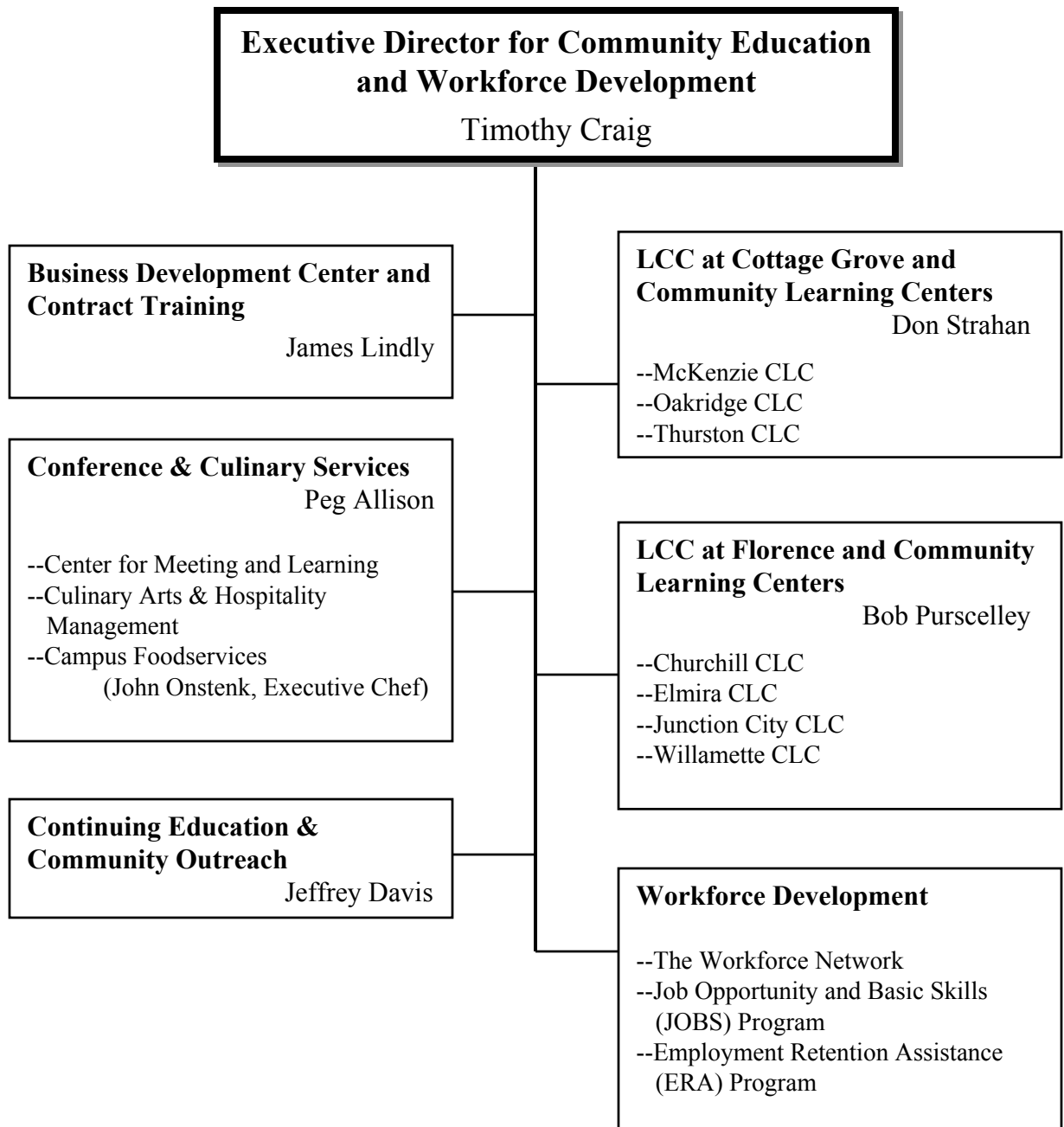
Dorothy Wearne

### Women's Program

Kate Barry

- Access
- Transitions to Success
- Women's Center

## Instruction & Student Services



## Council Structure

**Governance Structure:** The Governance Structure primarily deals with policy issues and issues that have campus-wide significance and impact. Any committee, task force, or council that ultimately makes recommendations to College Council is part of the Governance Structure.

**Academic Council:** The Academic Council is appointed by the President to advise the President about rules and policies concerning the maintenance of high academic standards. The council acts on student petitions covering extension of deadlines, program waivers, and graduation requirements.

**College Council:** The mission is to formulate and recommend policy to the President. Membership includes college president, vice presidents, assistant to the president, representatives from faculty, classified, student services, instructional services, non-instructional services, management steering committee, Management Council, LCCEA, LCCEF, and four representatives from ASLCC.

**Classified Council:** Classified Council provides a means for classified staff to effectively influence college policy and decision making. The Council seeks to build positive relationships among classified staff, and between classified staff and the rest of the LCC Community. The Council seeks to join with other groups in the LCC Community, working together to promote educational excellence and the welfare of the college community.

**Faculty Council:** Faculty Council contributes to the quality of education at Lane by providing an effective forum for faculty participation in governance.

**Management Council:** This group is a representative forum that gathers, clarifies, synthesizes and presents the thinking of members of the management employees' group on issues of importance to the college. They serve as a resource to the executive leadership of the college and represent managers as part of the shared governance system at Lane, including representation on College Council.

***2002-03 Statistical Summary***

<b>Unduplicated Headcount Students</b>	34,394
<b>Total Annual FTE</b>	12,364.3

**Programs Offered**

Technical Degree and Certificate Programs	50
---	----

**Degrees and Certificates Awarded:**

Total Degrees and Certificates	971
Lower Division Transfer Associate Degrees	368
Professional Technical Degrees and Certificates	603

**Student Characteristics:**

Female	19,542
Male	14,843
Credit	15,299
Non-Credit	19,095
Average Age (all students)	36.6 yrs
Students Receiving Financial Aid	6,331
Total Financial Aid Disbursed	\$31,894,809

**College Staff [Fall 2003]:**

Total Staff	1,005
Contracted Faculty	248
Part-Time Faculty	261
Contracted Classified	437
Managers & Management Support	59
Males	429
Females	576

**College District Population & Enrollment:**

District Population (US Census Bureau, 7/1/02)	326,666
Enrollment of In-District Students	31,374

**Financial Information:**

Total General Fund Resources	\$63,227,520
Total General Fund Expenditures	\$63,184,852

---

r:\profile\2002-03\Overview\02-03summ.xls

## 38 Years at a Glance

Years	Total Staff *	Full-time Staff *	General Fund Expenditures	Student Headcount	Total Annual FTE
2002-03	1,005	744	\$63,184,852	34,394	12,364.3
2001-02	1,163	828	\$66,472,484	40,099	13,265.1
2000-01	1,213	827	\$62,857,862	43,223	12,760.1
1999-00	1,107	790	\$61,864,194	41,766	12,449.4
1998-99	1,075	774	\$57,080,494	40,113	11,968.3
1997-98	1,053	774	\$54,768,949	37,954	12,148.7
1996-97	1,062	795	\$53,793,847	37,841	12,007.3
1995-96**	1,034	776	\$51,101,264	38,441	12,141.8
1994-95	1,009	763	\$48,763,856	37,360	9,308.2
1993-94	na	756	\$47,113,514	36,256	9,536.9
1992-93	1,022	762	\$44,245,093	35,570	9,842.9
1991-92	940	739	\$43,340,643	33,778	9,097.8
1990-91		686	\$36,489,043	33,212	8,857.6
1989-90	932	693	\$34,181,402	32,593	8,330.0
1984-85		744	\$26,520,823	32,947	8,198.8
1979-80		508	\$18,595,492		9,501.8
1974-75			\$9,774,882		7,133.1
1969-70			\$3,721,879		4,766.8
1964-65	138				1,435.0

\* Fall term 2003 data. **Total staff** includes: contracted faculty, part-time faculty, contracted classified, administrators, and management support. **Full-time staff includes** contracted faculty, contracted classified, administrators, and management support.

\*\* Oregon community colleges implemented a new FTE formula in 1995-96. The new formula FTE figures are 28-30% higher than FTE derived from the old formula. Consequently, comparison across the 1995-96 transition year of FTE enrollment is problematic.

## ***Lane Community College History Highlights***

- 1938** Eugene Vocational School offers first class.
- 1958** Eugene Technical-Vocational School offers first class.
- 1964** Formation of community college district is approved by voters. Board of Education is elected. Lane Community College is founded on October 19
- 1965** Board finalizes the permanent location of the college by receiving a 105.81 acre tract of land southeast of Eugene, donated by Wilfred Gonyea, a Eugene industrialis  
Lane begins first regular year of instruction with staff of 138 and enrollment of 1,435 full-time equivalent students
- 1966** Lane is granted candidacy status for accreditation by Northwest Association of Schools and Colleges.  
Lane graduates first class of 163 students.
- 1967** KLCC-FM begins broadcasting.
- 1968** Classes begin at new campus, 4000 East 30th Avenue, in southeast Eugene.  
Full accreditation is awarded by Northwest Association of School and Colleges.
- 1972** Joe Romania and Lew Williams donate 127 acres, nearly doubling the size of the campus.
- 1974** Ten-year accreditation is awarded to college by Northwest Association of Schools and Colleges.
- 1976** Siuslaw Area Center opens in Florence.
- 1977** Downtown Center opens.  
Central Area Education Center opens in Cottage Grove.
- 1979** First telecourse is offered.
- 1981** Business Assistance Center opens.
- 1984** Ten-year accreditation is awarded to Lane.  
Oregon Small Business Development Network is formed and housed at Lane.
- 1985** Twentieth birthday celebration - "20 years...a great beginning!"
- 1987** Single parent/displaced homemaker "Transitions to Success" program starts.  
ClassLine Touchtone registration system is introduced.
- 1988** Weekend College begins offering classes on Saturdays.
- 1989** Lane celebrates twenty-fifth anniversary - "25 years of building successes."
- 1990** New college tax base is approved. Ballot Measure 5 (property tax limitation) passes statewide.  
Lane enrolls 600,000th student.

## ***Lane Community College History Highlights***

- 1993** Lane helps recruit Symantec, a software company, to Eugene; trains 90 new employees for the company.  
College Council adopts vision statement: "Lane Community College provides a quality learning experience in a caring environment."  
First Eugene airshow in many years is coordinated by the LCC Foundation as a benefit for Lane's Aviation Maintenance program  
Lane's 1992-93 enrollment sets a record of 35,570 headcount and 9,719.9 FTE.
- 1994** Four varsity sports - men's and women's cross country, men's baseball, and women's volleyball - are reinstated, funded by a fee approved by students  
Lane begins its 30th anniversary (1994-95) celebration with a 1960's style sock hop for staff and students.  
College is granted accreditation for a ten-year period.
- 1995** STARTech, a pre-employment training program for high-tech jobs, is launched by Lane, Sony Disc Manufacturing, and Symantec Corporation  
Voters approve a \$42.8 million construction bond issue for the college.  
Associate of arts Oregon transfer degree is offered via distance learning.  
Lane's first web page is posted on the internet.
- 1996** Student's First! Process Redesign Project is launched.  
African American Rites of Passage Summer Academy is established by Lane and the African American Community Coalition  
Hyundai Semiconductor America contracts with Lane to train manufacturing technicians.  
Lane is the only community college invited to the Harvard Invitational Debate Championships.
- 1997** Annual registration begins at Lane, allowing continuing credit students to reserve classes a year at a time.  
Lane is cited for excellence in "A Learning College for the 21st Century," a new book by League for Innovation Exec. Dir. Terry O'Bannon, published by the American Council on Education and the American Association of Community College;  
LCC at Cottage Grove opens new facility, funded by the \$42.8 million construction bond approved by voters in 1995.  
Lane's Learning Center at Thurston High School opens. It is the first of eight neighborhood facilities funded by the construction bond
- 1998** Lane's Community Learning Centers at Willamette High School and Churchill High School open.  
Student's First! Center opens on the second floor of the Center Building. The center provides one-stop service to students for general information, enrollment, student records, financial aid financial transactions and referrals.  
Lane receives a Federal Aviation Administration safety award for 200,000 consecutive hours and 25 million miles of professional flight training since 1967 without a single injury accident  
A new logo is selected after nearly a year of work and input from more than 70 members of the campus community

## ***Lane Community College History Highlights***

- 1998**  
*cont.* The Community Learning Center project receives the Exemplary Program Award in Distance Learning from the National Council for Continuing Education and Training. The Tutor Program receives certification from the College Reading & Learning Association.
- 1999** The Financial Aid counter closes permanently, turning over services to Students First!. Students First! wins the 1998-99 Exemplary Program Award for the Northwest Region from the National Council on Student Development at the American Association of Community Colleges in Nashville. Students First! is cited as an innovative rethinking of how work is performed and services are delivered to students. Lane Foundation receives a \$2 million gift from the estate of Ralph and Gilma Greenhoot of Springfield to provide annual \$3,500 scholarships at metro area high schools beginning in September 2001. Class schedules and the college catalog are available over the internet. KLCC begins 24-hour programming with the addition of Jazz Overnight airing 1-5 a.m.
- 2000** Adult Basic and Secondary Education receives the 1998-99 Secretary's Award for Outstanding Programs from the U.S. Department of Education, Division of Adult Education and Literacy. Elmira High School Community Learning Center and Jim Pitney Learning Center at Junction City High School are built from 1995 \$42.5 million construction bond funds. Lane is selected as one of 12 Vanguard Learning Colleges in the United States and Canada for its commitment to improving learning. Vanguard colleges will share practices and models with other colleges around the nation. Buildings #8 (houses welding and jewelry programs) and building #1 are built from the 1995 \$42.5 million construction bond funds.
- 2001** Dr. Mary Spilde is chosen to be Lane's sixth president by unanimous resolution of the Board of Education. Spilde was a vice president of instruction at Lane from 1995-2001. A dual admission and enrollment program is announced by Lane and the University of Oregon. The program increases credit enrollment opportunities, advising and financial aid. KLCC begins broadcasting in Reedsport from its new licensed radio station KLFR 89.1 FM. The evening/weekend project is named the 2000-01 Innovation of the Year. Team PROJECT helped increase the number of degree and certificate programs which could be completed at night and on weekends, in response to community demand. A \$2 million gift is made to the Lane Foundation by the Robert W. and Bernice Ingalls Staton Foundation. It is one of the two largest gifts in the Foundation's history. The gift will fund 20 \$5,000 annual scholarships, 15 for professional-technical students and 5 for transfer students.

## ***Lane Community College History Highlights***

- 2002** A windstorm on February 7 caused the closure of all campuses and centers for the evening. A woman was pinned by a toppled oak tree on main campus and treated for bruises; a flight technician airplane landed in Albany and two flight technician helicopters landed in Coburg
- The main college telephone number changed to 463-3000 and the prefix 463 replaced most other prefixes in college telephone numbers
- Lane's class schedule won first-place in the annual Paragon Awards competition sponsored by the National Council for Marketing and Public Relations.
- A budget reduction of about 7 percent is made for 2002/03 following years of state funding shortfalls and enrollment growth. Budget balancing action required a tuition increase of \$10 or about 26 percent, and the elimination of 7 professional-technical programs
- An economic impact study of Oregon community colleges with individual college profiles showed that every \$1 of tax money invested in Lane returns a cumulative \$19 over the next 30 years, among other evidence.
- A single health insurance plan was approved by employees and the board to help control the rising cost of premiums. It replaced six different plans previously in use

The college Archives maintains a web site at <http://www.lanecc.edu/archive/history.htm>  
It contains a brief narrative history of the college, a chronological history listing significant events, a list of college presidents and Board members, several exhibits and resources for further information.