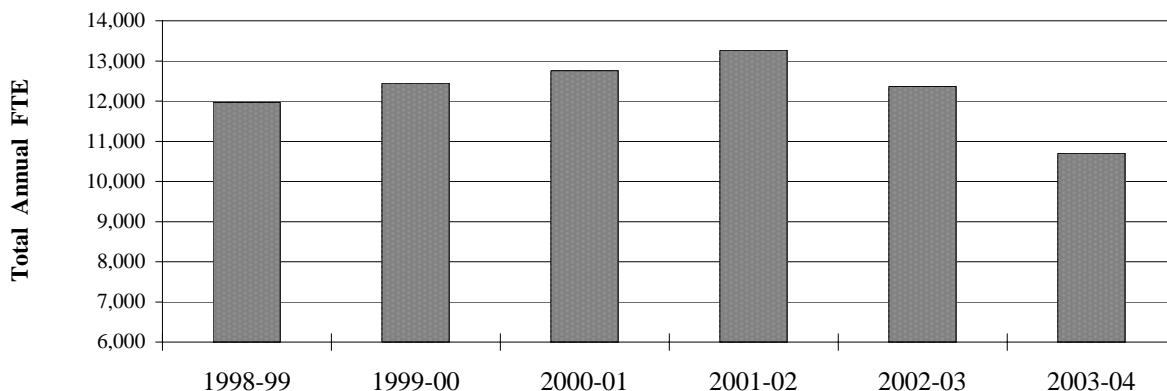


Total Annual FTE

(includes reimbursable and non-reimbursable FTE)



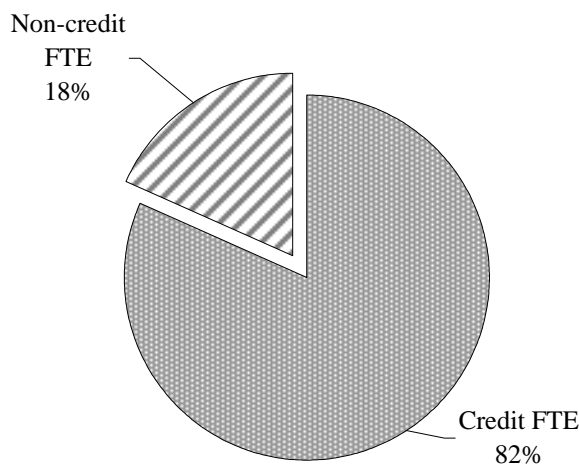
Notes: An adjustment was made to the method used to calculate FTE for most credit classes for winter and spring terms 1999 which led to a slight decline in FTE for 1998-99.

Total annual FTE for Lane decreased 13.5% in 2003-04. This includes both reimbursable and non-reimbursable FTE.

Credit FTE are derived from the following reimbursement categories: lower division collegiate, professional technical preparatory, and post-secondary remedial.

Note: Courses for fall term 2003 were offered over 11 weeks rather than 12 weeks. This resulted in fewer contact hours per course for the term and, therefore, fewer FTE compared to previous fall terms. However, the state continues to reimburse colleges on a 12-week basis for fall term under the "hold harmless" agreement.

2003-04 FTE



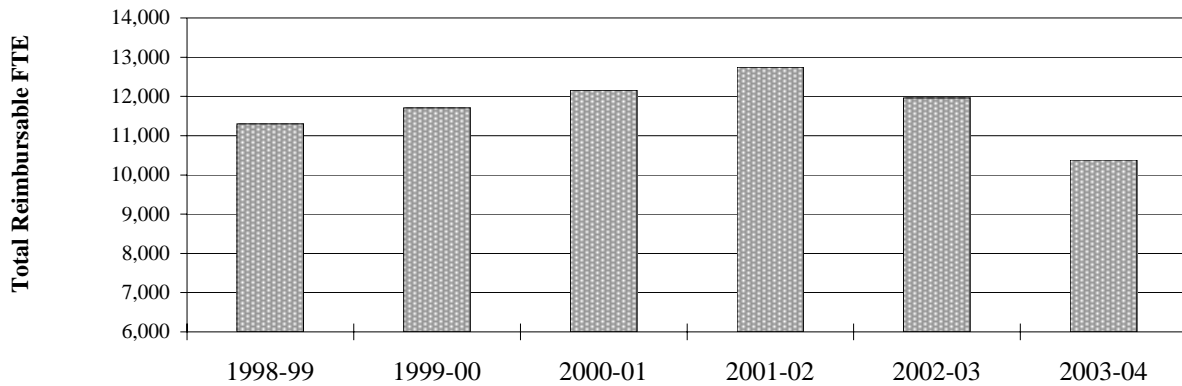
	1998-99	1999-00	2000-01	2001-02	2002-03	2003-04
Total FTE	11,968.3	12,449.4	12,760.1	13,265.1	12,364.3	10,699.9
% of Total Annual FTE	100%	100%	100%	100%	100%	100%
Yearly Change	na	4.0%	2.5%	4.0%	-6.8%	-13.5%
Cumulative Change (based on '98-99)	na	4.0%	6.6%	10.8%	3.3%	-10.6%

Source: IRZ2202 and OCCURS Course file and Enrollment Reports.

Institutional Research, Assessment & Planning

r:\profile\2003-04\fte\totl_fte.xls

Total Reimbursable FTE

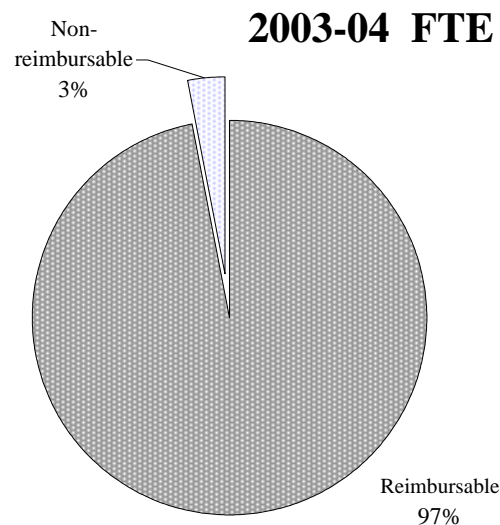


Notes: An adjustment was made to the method used to calculate FTE for most credit classes for winter and spring terms 1999 which led to a slight decline in FTE for 1998-99.

Total reimbursable FTE decreased 13.3% during 2003-04. Reimbursable FTE are derived from most courses taught and students enrolled at Lane. Courses yielding non-reimbursable FTE (i.e., these FTE are not considered in the state funding formula) are described by state instructional guidelines and can be generally categorized as certain types of hobby or recreation courses. Out-of-state students also yield non-reimbursable FTE.

Reimbursable FTE are used in the state funding formula.

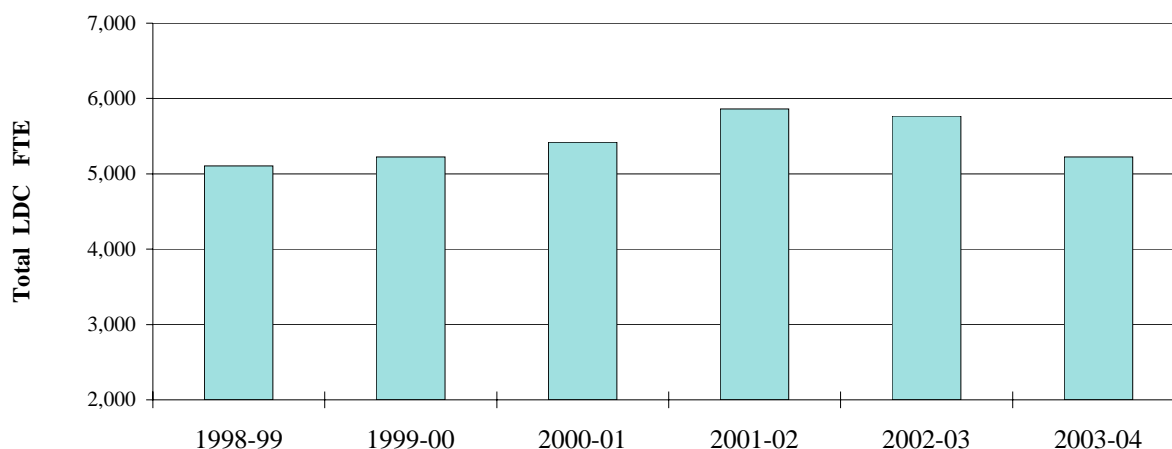
Note: Courses for fall term 2003 were offered over 11 weeks rather than 12 weeks. This resulted in fewer contact hours per course for the term and, therefore, fewer FTE compared to previous fall terms. However, the state continues to reimburse colleges on a 12-week basis for fall term under the "hold harmless" agreement.



	1998-99	1999-00	2000-01	2001-02	2002-03	2003-04
Total Reimbursable FTE	11,299.4	11,709.7	12,157.1	12,746.9	11,962.5	10,376.8
% of Total Annual FTE	94.4%	94.1%	95.3%	96.1%	96.8%	97.0%
Yearly Change	na	3.6%	3.8%	4.9%	-6.2%	-13.3%
Cumulative Change (based on '98-99)	na	3.6%	7.6%	12.8%	5.9%	-8.2%

Source: IRZ2202 and OCCURS Course file and Enrollment Reports; "The Oregon Community College Handbook."

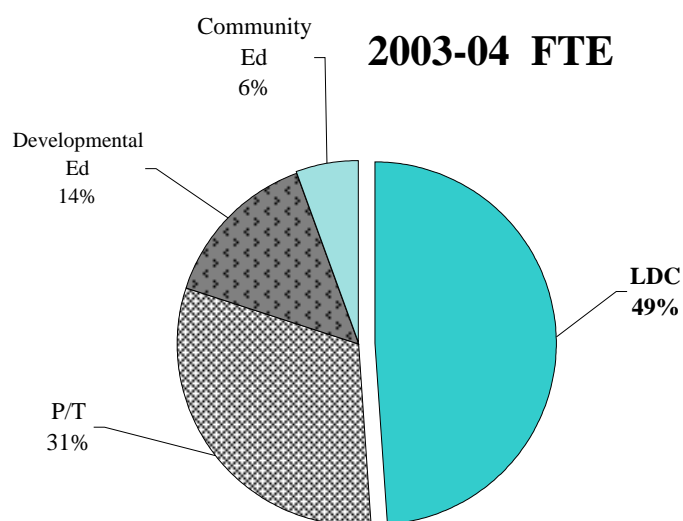
Lower Division Collegiate (Transfer) FTE



FTE in this reimbursement category are generated by students enrolled in courses in the Lower Division Collegiate (LDC) category. These courses are transferable to a four-year institution and apply toward a Bachelor's degree.

LDC FTE for Lane decreased 9.4% in 2003-04.

An adjustment was made to the method used to calculate FTE for most credit classes for winter and spring terms 1999 which led to a slight decline in FTE for 1998-99.



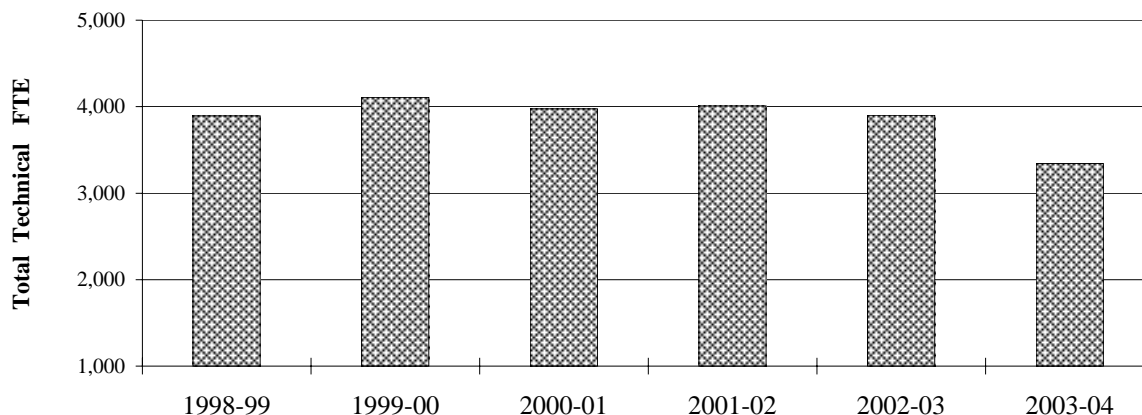
Note: Courses for fall term 2003 were offered over 11 weeks rather than 12 weeks. This resulted in fewer contact hours per course for the term and, therefore, fewer FTE compared to previous fall terms. However, the state continues to reimburse colleges on a 12-week basis for fall term under the "hold harmless" agreement.

	1998-99	1999-00	2000-01	2001-02	2002-03	2003-04
Total LDC FTE	5,103.3	5,223.1	5,418.6	5,860.9	5,767.9	5,224.7
% of Overall Total	42.6%	42.0%	42.5%	44.2%	46.6%	48.8%
Yearly Change	na	2.3%	3.7%	8.2%	-1.6%	-9.4%
Cumulative Change (based on '98-99)	na	2.3%	6.2%	14.8%	13.0%	2.4%

Source: IRZ2202; OCCURS Annual Enrollment Rpt.

r:\profile\2003-04\fte\ldc_fte.xls

Professional and Technical FTE

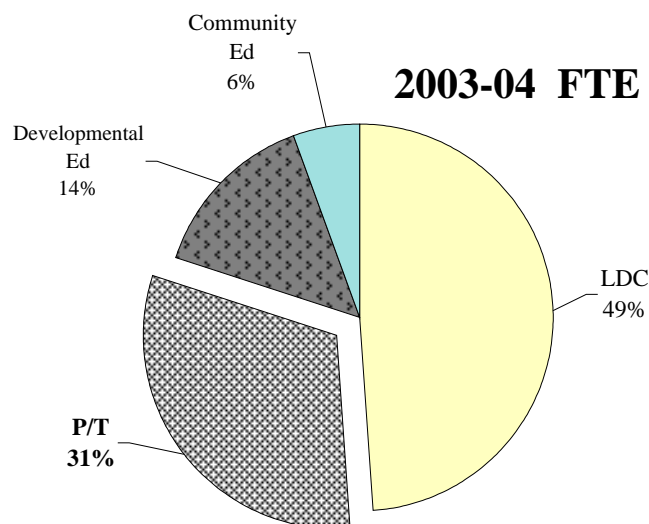


Professional and Technical courses include the reimbursement categories of Preparatory, Supplementary, and Apprenticeship. FTE in this broad group decreased 14.4% in 2003-04.

Tech Prep courses enable high school students to begin to train for a professional technical career while still in high school and to earn college credits while doing so.

An adjustment was made to the method used to calculate FTE for most credit classes for winter and spring terms 1999 which led to a slight decline in '98-99 FTE.

Note: Courses for fall term 2003 were offered over 11 weeks rather than 12 weeks. This resulted in fewer contact hours per course for the term and, therefore, fewer FTE compared to previous fall terms. However, the state continues to reimburse colleges on a 12-week basis for fall term under the "hold harmless" agreement.

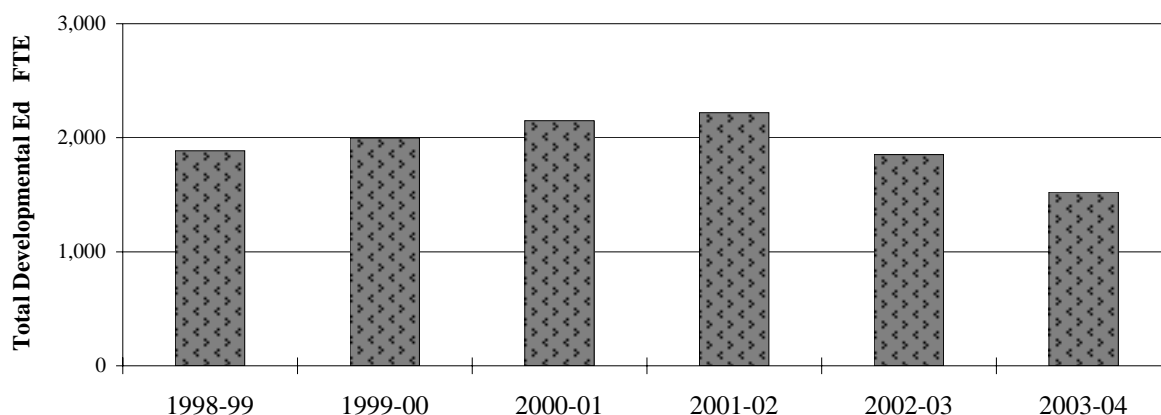


	1998-99	1999-00	2000-01	2001-02	2002-03	2003-04
Total Prof. & Tech. FTE	3,893.1	4,109.8	3,973.5	4,009.0	3,902.4	3,341.7
% of Overall Total	32.5%	33.0%	31.1%	30.2%	31.6%	31.2%
Yearly Change	na	5.6%	-3.3%	0.9%	-2.7%	-14.4%
Cumulative Change (based on '98-99)	na	5.6%	2.1%	3.0%	0.2%	-14.2%
Preparatory	2,716.9	2,781.8	2,759.2	2,962.4	2,993.7	2,689.4
Supplementary	914.3	911.6	927.9	790.6	695.5	453.9
Apprenticeship	261.9	416.4	286.4	256.1	213.2	198.5

Source: IRZ2202; OCCURS Annual Enrollment Rpt.

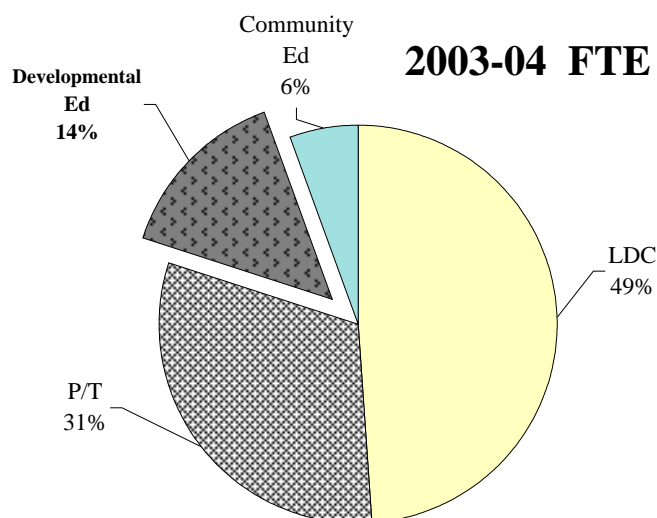
r:\profile\2003-04\fte\P_T.xls

Developmental Education FTE



The broad group of Developmental Education includes courses from the following reimbursement categories: English as a Second Language (ESL), Adult Basic Education (ABE), General Education Development (GED), Adult High School (AHS), and Post-Secondary Remedial (PSR).

Note: Courses for fall term 2003 were offered over 11 weeks rather than 12 weeks. This resulted in fewer contact hours per course for the term and, therefore, fewer FTE compared to previous fall terms. However, the state continues to reimburse colleges on a 12-week basis for fall term under the "hold harmless" agreement.

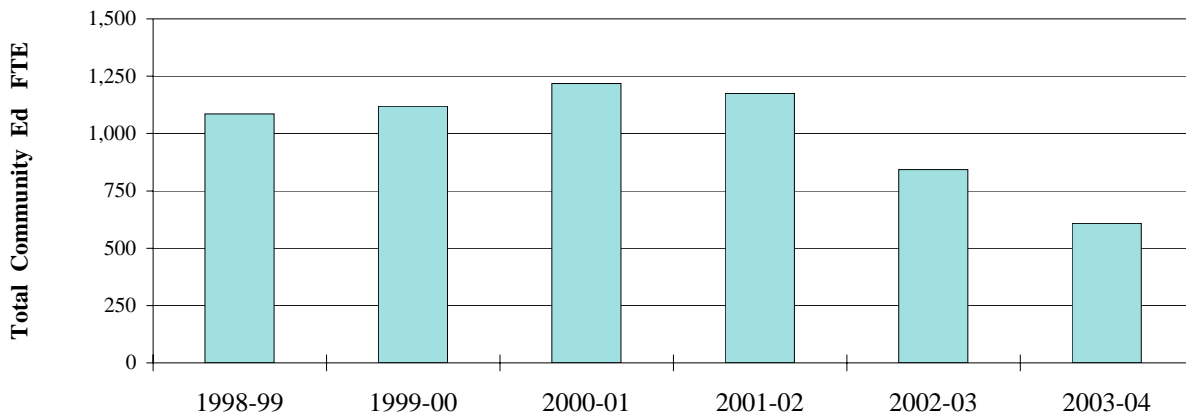


	1998-99	1999-00	2000-01	2001-02	2002-03	2003-04
Total Developmental FTE	1,886.8	1,997.5	2,150.4	2,219.8	1,851.3	1,524.9
% of Overall Total	15.8%	16.0%	16.9%	16.7%	15.0%	14.3%
Yearly Change	na	5.9%	7.7%	3.2%	-16.6%	-17.6%
Cumulative Change (based on '98-99)	na	5.9%	14.0%	17.6%	-1.9%	-19.2%
ESL	237.8	308.3	272.1	298.9	308.0	258.0
ABE	402.6	365.7	540.7	508.6	295.4	259.9
GED	277.7	278.5	271.4	245.8	276.1	182.0
AHS	330.6	311.5	283.2	251.2	55.9	-
PSR	638.1	733.5	783.1	915.3	915.9	825.1

Source: IRZ2202; OCCURS Annual Enrollment Rpt.

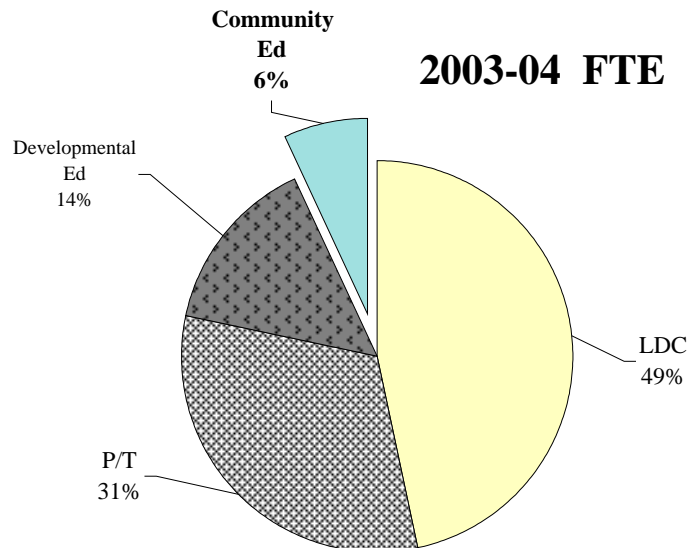
r:\profile\2003-04\fte\devel_ed.xls

Community Education FTE



FTE in this group are derived from courses in the Self-Improvement and Non-reimbursable reimbursement categories (Note: The Self-Improvement category was changed to Adult Continuing Edn. in 2002-03 and classes other than workforce training and health related are no longer eligible for state reimbursement funding). Lane departments contributing to this group include the Business Development & Contract Training, Continuing Education & Educational Outreach, LCC at Cottage Grove and LCC at Florence. Note: Non-reimbursable FTE are derived from a particular category of courses and from out-of-state students enrolling in courses that would otherwise yield reimbursable FTE.

Note: Courses for fall term 2003 were offered over 11 weeks rather than 12 weeks. This resulted in fewer contact hours per course for the term and, therefore, fewer FTE compared to previous fall terms. However, the state continues to reimburse colleges on a 12-week basis for fall term under the "hold harmless" agreement.

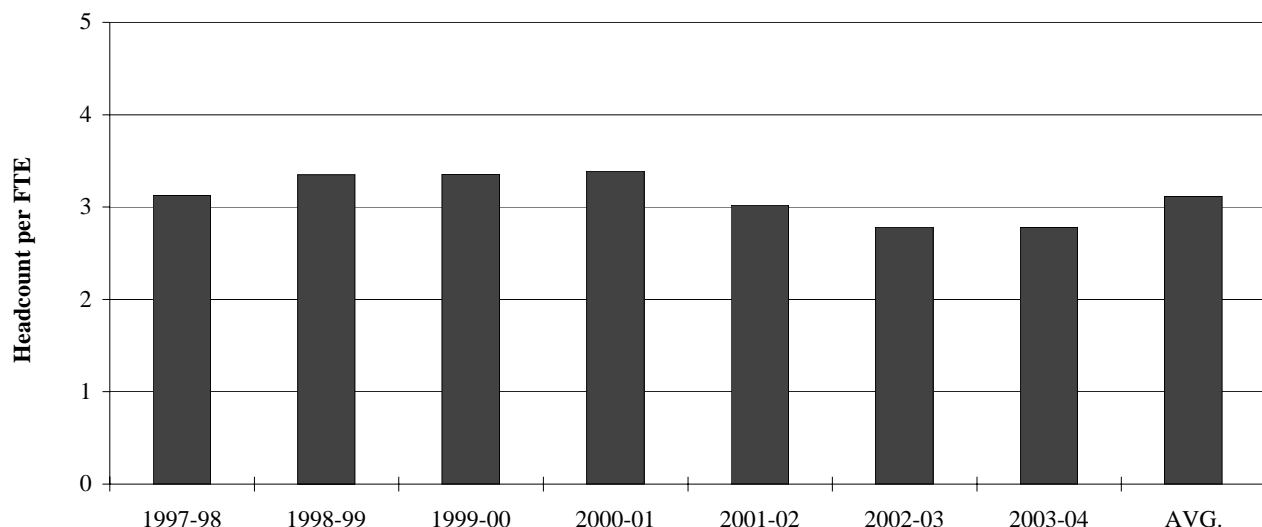


	1998-99	1999-00	2000-01	2001-02	2002-03	2003-04
Total Community Ed FTE	1,085.2	1,119.0	1,217.6	1,175.1	842.3	608.2
% of Overall Total	9.1%	9.0%	9.5%	8.9%	6.8%	5.7%
Yearly Change	na	3.1%	8.8%	-3.5%	-28.3%	-27.8%
Cumulative Change (based on '98-99)	na	3.1%	12.2%	8.3%	-22.4%	-44.0%
Self-Improve./Adult Continuing Edn.	925.5	932.5	1,016.3	989.1	696.0	461.7
Non-Reimbursable	159.7	186.5	201.3	186.1	146.3	146.5

Source: OCCURS Annual Enrollment Rpts.

r:\profile\2003-04\fte\comm_ed.xls

Headcount per FTE



Note: An adjustment was made to the method used to calculate FTE for most credit classes for winter and spring terms 1999 which led to a slight decline in FTE for 1998-99.

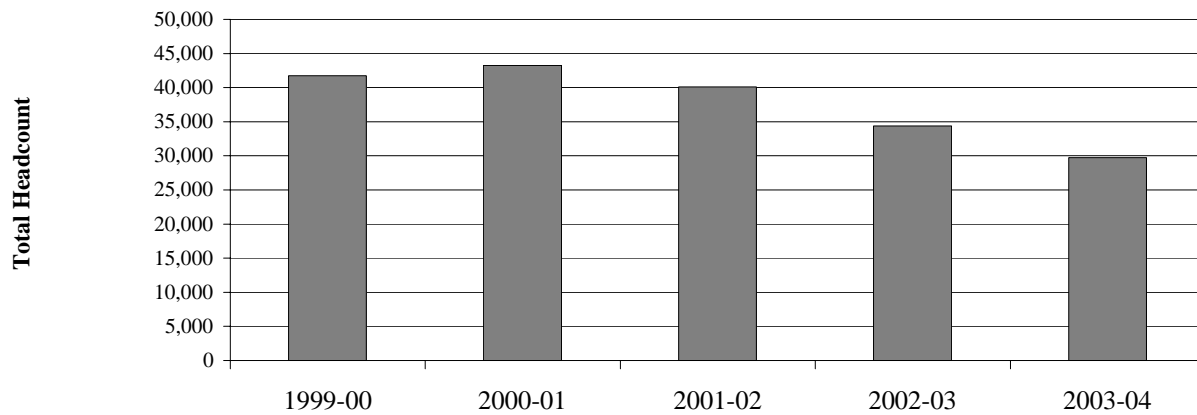
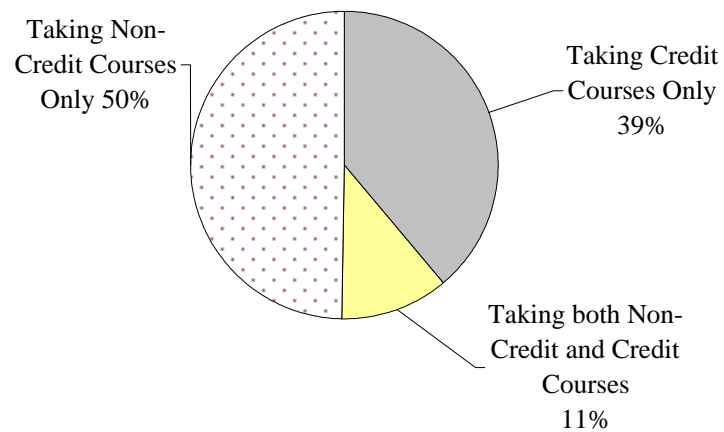
The average headcount per FTE in the graph above is based on 1997-98 through 2003-04 ratios. In 2003-04, it took an average of 2.78 students to generate one 510-clock-hour FTE.

Note: Courses for fall term 2003 were offered over 11 weeks rather than 12 weeks. This resulted in fewer contact hours per course for the term and, therefore, fewer FTE compared to previous fall terms. However, the state continues to reimburse colleges on a 12-week basis for fall term under the "hold harmless" agreement.

	1997-98	1998-99	1999-00	2000-01	2001-02	2002-03	2003-04
Total FTE	12,148.8	11,968.3	12,449.4	12,760.1	13,265.1	12,364.3	10,699.9
Total Headcount	37,954	40,113	41,766	43,223	40,099	34,394	29,743
Headcount per FTE	3.12	3.35	3.35	3.39	3.02	2.78	2.78
Yearly Change	na	7.3%	0.1%	1.0%	-10.8%	-8.0%	-0.1%
Cumulative Change	na	7.3%	7.4%	8.4%	-3.2%	-11.0%	-11.0%

(based on '97-98)

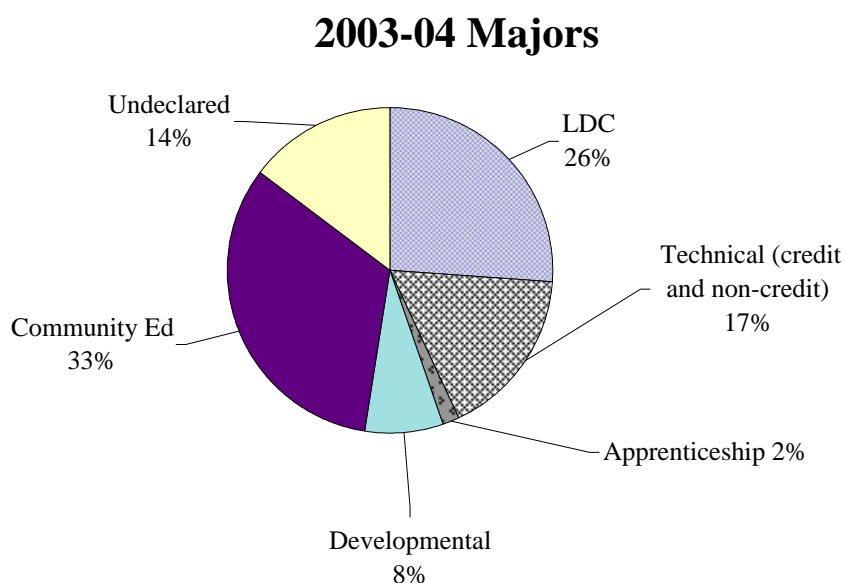
Sources: FTE = IRZ2202; Headcount = OCCURS Student files

Total Headcount**2003-04
Headcount**

	1999-00	2000-01	2001-02	2002-03	2003-04
Total Headcount	41,766	43,223	40,099	34,394	29,743
Yearly Change	na	3.5%	-7.2%	-14.2%	-13.5%
Cumulative Change	na	3.5%	-4.0%	-17.7%	-28.8%

(based on '99-00)

Students were counted as credit students if they were enrolled in credit courses any term they attended Lane in 2003-04. Credit courses include credit, College High, and Tech Prep courses. Credit courses do not include Adult Basic Ed or non-credit courses.

Major Headcount

Lower Division Collegiate (LDC) majors are students who have declared majors in Transfer programs. These majors include the AAOT, AS, and AG degree majors and Direct Transfer majors.

Technical majors are credit or non-credit students who are pursuing professional technical fields or training. Non-credit professional training includes massage therapy, court reporting, and short term training.

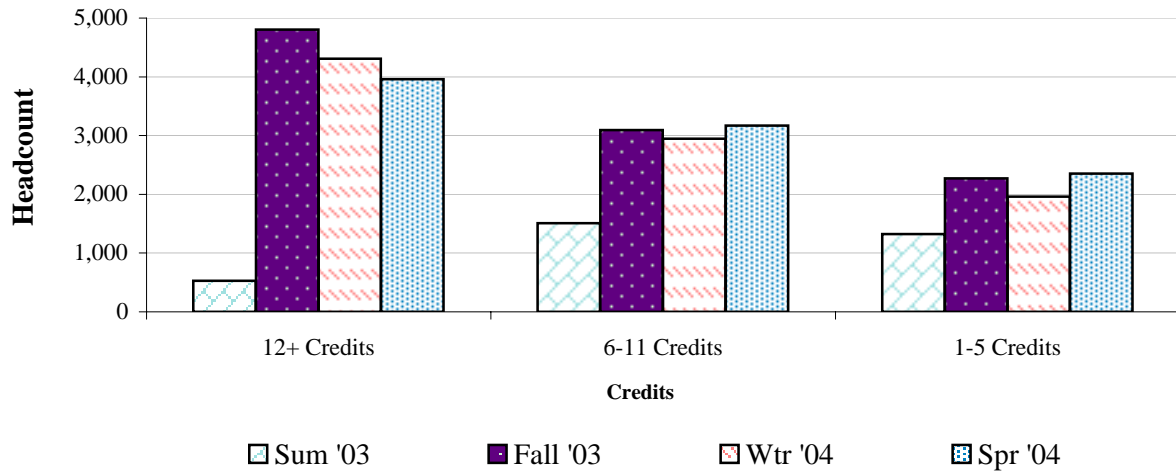
Developmental education students are in programs such as GED, English as a Second Language, and Adult Basic Education.

	2003-04	%
LDC Headcount	7,759	26.1%
Technical Headcount	5,564	18.7%
Developmental Ed Hdnt	2,265	7.6%
Community Ed	9,815	33.0%
Undeclared	4,340	14.6%
Total	29,743	100.0%

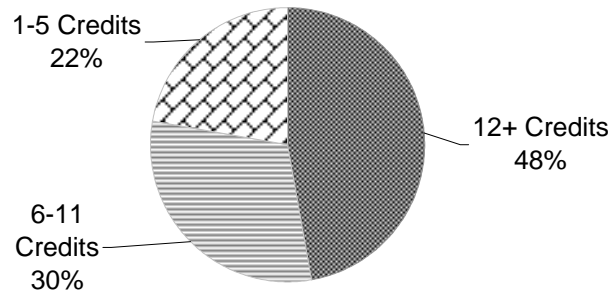
Source: OCCURS Student Files Unduplicated by Last Term Registered

r:\profile\03-04\hdnt\0304prof.xls LDC Hdnt

Enrollment by Credit Hours



**Attempted Credits
Fall Term 2003**



<i>Credits Attempted</i>	Sum '03		Fall '03		Wtr '04		Spr '04	
	#	%	#	%	#	%	#	%
12+ Credits	531	15.8%	4,804	47.3%	4,306	46.7%	3,957	41.7%
6-11 Credits	1,510	44.8%	3,093	30.4%	2,946	32.0%	3,169	33.4%
1-5 Credits	1,326	39.4%	2,269	22.3%	1,961	21.3%	2,353	24.8%
Totals	3,367	100%	10,166	100%	9,213	100%	9,479	100%

Twenty-three hundred and ninety (2,390) students attempted 12+ credits in three out of four terms during 2003-04.