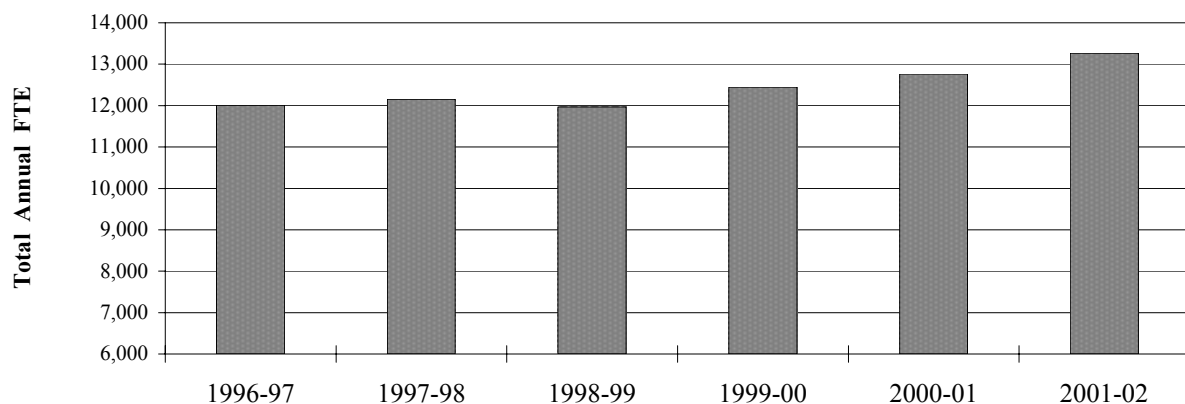


Total Annual FTE

(includes reimbursable and non-reimbursable FTE)

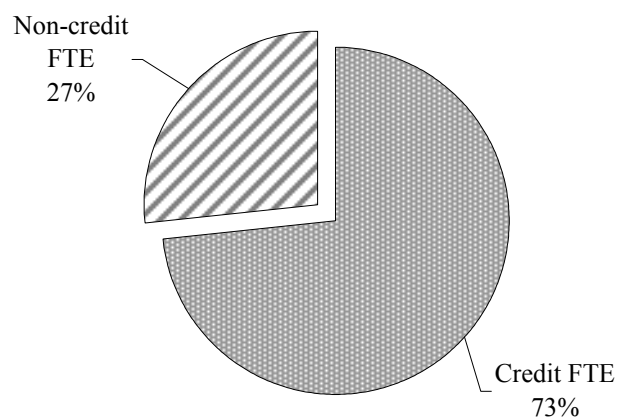


Notes: An adjustment was made to the method used to calculate FTE for most credit classes for winter and spring terms 1999 which led to a slight decline in FTE for 1998-99.

Total annual FTE for Lane increased 4.0% in 2001-02. This includes both reimbursable and non-reimbursable FTE.

Credit FTE are derived from the following reimbursement categories: lower division collegiate, professional technical preparatory, and post-secondary remedial.

2001- 02 FTE



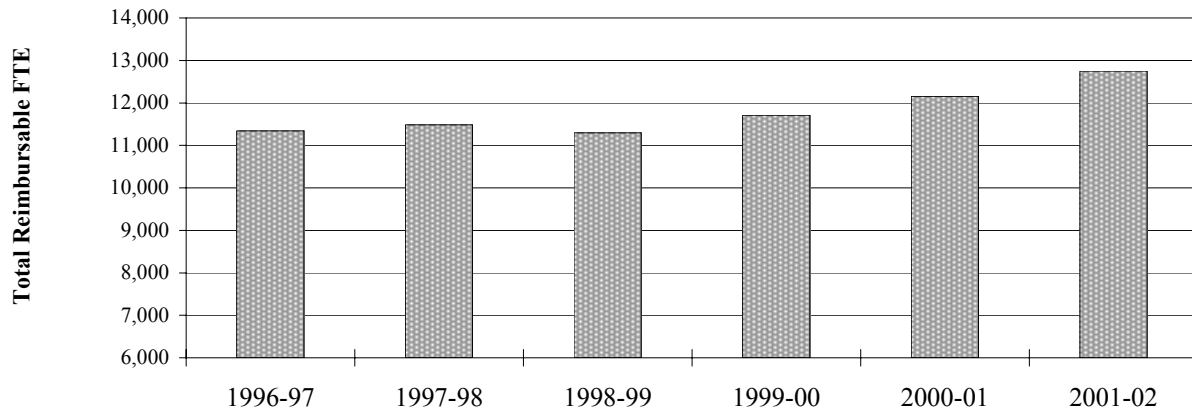
	1996-97	1997-98	1998-99	1999-00	2000-01	2001-02
Total FTE	12,007.3	12,148.8	11,968.3	12,449.4	12,760.1	13,265.1
% of Total Annual FTE	100%	100%	100%	100%	100%	100%
Yearly Change	na	1.2%	-1.5%	4.0%	2.5%	4.0%
Cumulative Change (based on '96-97)	na	1.2%	-0.3%	3.7%	6.3%	10.5%

Source: IRZ2202 and OCCURS Course file and Enrollment Reports.

Institutional Research, Assessment & Planning

r:\profile\2001-02\fte\totl_fte.xls

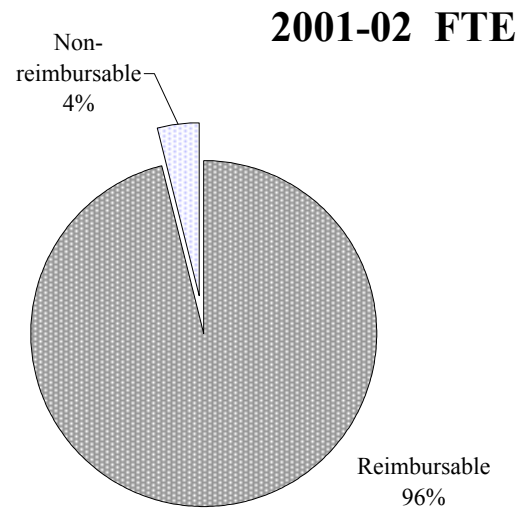
Total Reimbursable FTE



Notes: An adjustment was made to the method used to calculate FTE for most credit classes for winter and spring terms 1999 which led to a slight decline in FTE for 1998-99.

Total reimbursable FTE increased 4.9% during 2001-02. Reimbursable FTE are derived from most courses taught and students enrolled at Lane. Courses yielding non-reimbursable FTE (i.e., these FTE are not considered in the state funding formula) are described by state instructional guidelines and can be generally categorized as certain types of hobby or recreation courses. Out-of-state students also yield non-reimbursable FTE.

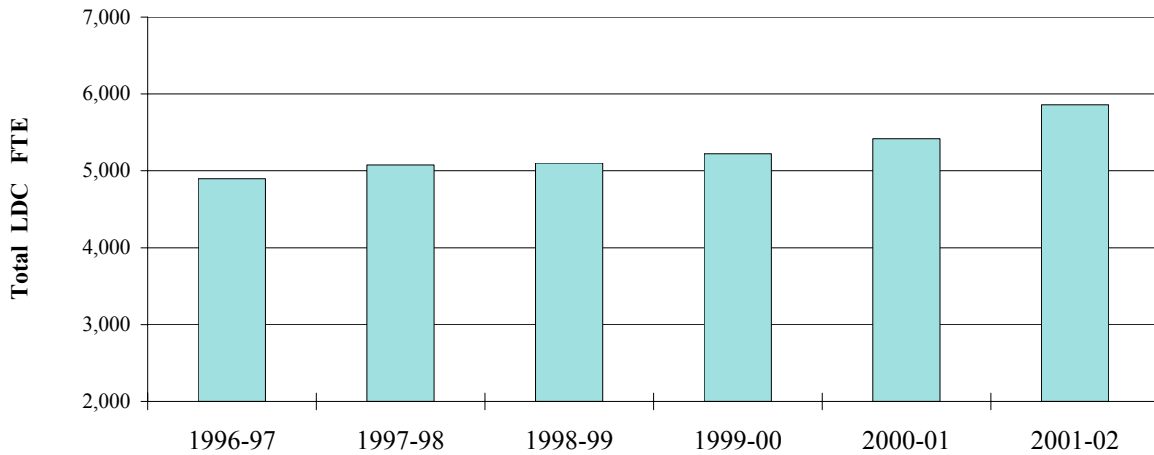
Reimbursable FTE are used in the state funding formula.



	1996-97	1997-98	1998-99	1999-00	2000-01	2001-02
Total Reimbursable FTE	11,338.6	11,485.4	11,299.4	11,709.7	12,157.1	12,746.9
% of Total Annual FTE	94.4%	94.5%	94.4%	94.1%	95.3%	96.1%
Yearly Change	na	1.3%	-1.6%	3.6%	3.8%	4.9%
Cumulative Change (based on '96-97)	na	1.3%	-0.3%	3.3%	7.2%	12.4%

Source: IRZ2202 and OCCURS Course file and Enrollment Reports; "The Oregon Community College Handbook."

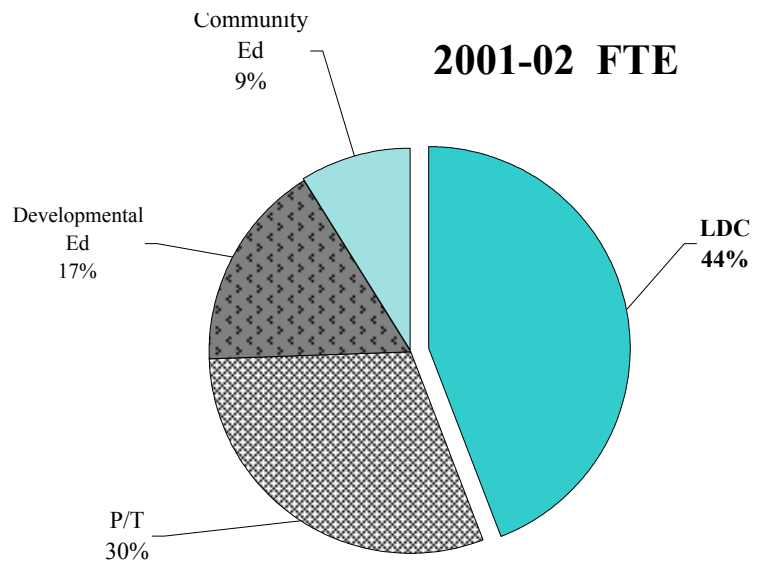
Lower Division Collegiate (Transfer) FTE



FTE in this reimbursement category are generated by students enrolled in courses in the Lower Division Collegiate (LDC) category. These courses are transferable to a four-year institution and apply toward a Bachelor's degree.

For a sixth consecutive year, LDC FTE increased. FTE in this category are expected to increase slightly during the 2002-03 academic year.

An adjustment was made to the method used to calculate FTE for most credit classes for winter and spring terms 1999 which led to a slight decline in FTE for 1998-99.

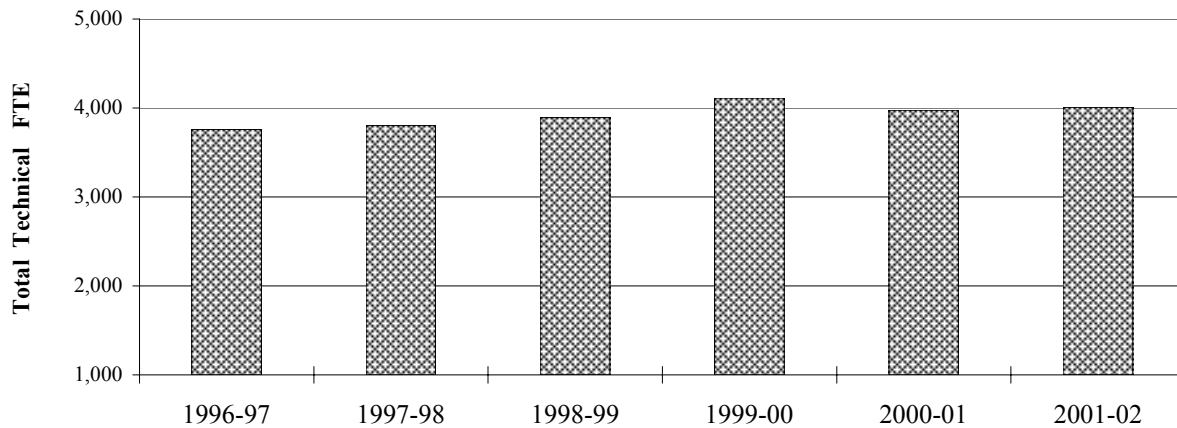


	1996-97	1997-98	1998-99	1999-00	2000-01	2001-02
Total LDC FTE	4,896.5	5,078.5	5,103.3	5,223.1	5,418.6	5,860.9
% of Overall Total	40.8%	41.8%	42.6%	42.0%	42.5%	44.2%
Yearly Change	na	3.7%	0.5%	2.3%	3.7%	8.2%
Cumulative Change (based on '96-97)	na	3.7%	4.2%	6.7%	10.7%	19.7%

Source: IRZ2202; OCCURS Annual Enrollment Rpt. ('01-02).

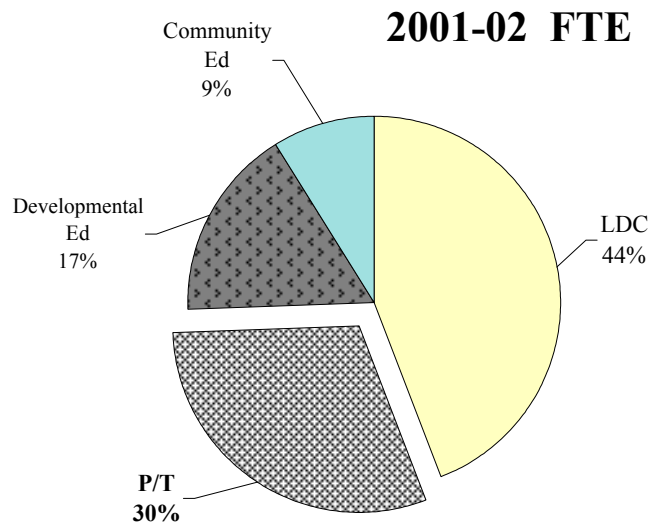
r:\profile\2001-02\fte\ldc_fte.xls

Professional and Technical FTE



Professional and Technical courses include the reimbursement categories of Preparatory, Supplementary, and Apprenticeship. FTE in this broad group increased in 1999-00 due, in part, to a substantial increase in Apprenticeship and to the newly approved reimbursability of Tech Prep courses. Tech Prep courses enable high school students to begin to train for a professional technical career while still in high school and to earn college credits while doing so.

An adjustment was made to the method used to calculate FTE for most credit classes for winter and spring terms 1999 which led to a slight decline in '98-99 FTE.

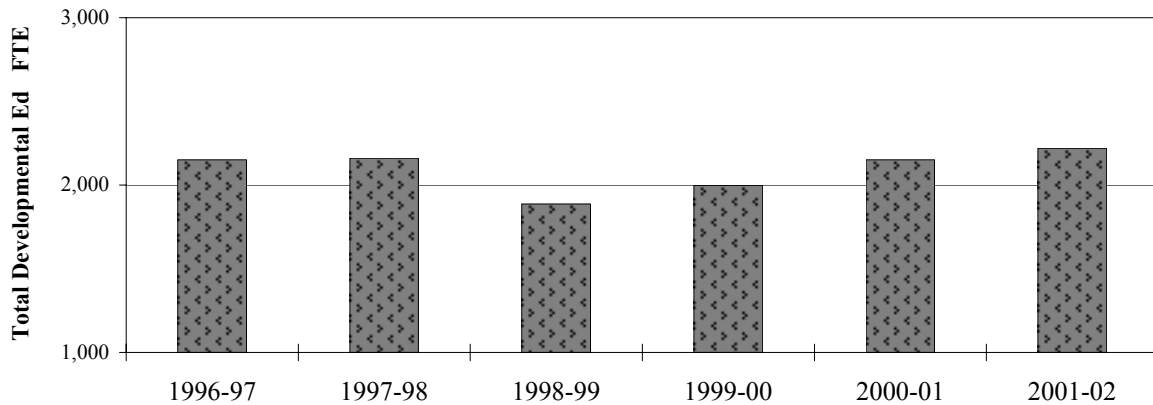


	1996-97	1997-98	1998-99	1999-00	2000-01	2001-02
Total Prof. & Tech. FTE	3,760.5	3,800.8	3,893.1	4,109.8	3,973.5	4,009.0
% of Overall Total	31.3%	31.3%	32.5%	33.0%	31.1%	30.2%
Yearly Change	na	1.1%	2.4%	5.6%	-3.3%	0.9%
Cumulative Change (based on '96-97)	na	1.1%	3.5%	9.3%	5.7%	6.6%
Preparatory	2,613.4	2,639.8	2,716.9	2,781.8	2,759.2	2,962.4
Supplementary	886.6	895.6	914.3	911.6	927.9	790.6
Apprenticeship	260.5	265.4	261.9	416.4	286.4	256.1

Source: IRZ2202; OCCURS Annual Enrollment Rpt. ('01-02).

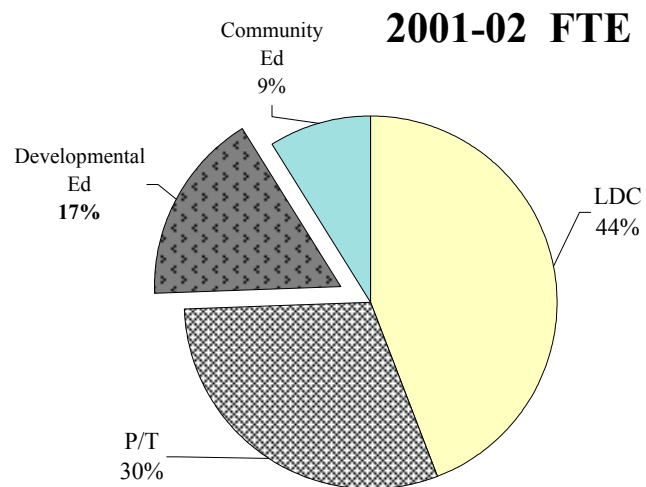
r:\profile\2001-02\fte\P_T.xls

Developmental Education FTE



The broad group of Developmental Education includes courses from the following reimbursement categories: English as a Second Language (ESL), Adult Basic Education (ABE), General Education Development (GED), Adult High School (AHS), and Post-Secondary Remedial (PSR).

Note: A change in FTE accounting procedures resulted in a downward-adjustment to FTE for several categories in this group for 1996-97.

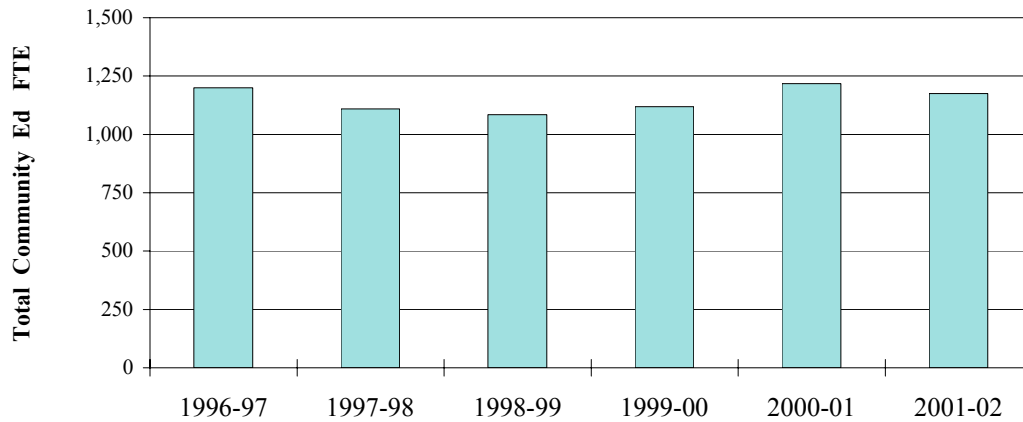


	1996-97	1997-98	1998-99	1999-00	2000-01	2001-02
Total Developmental FTE	2,151.0	2,160.4	1,886.8	1,997.5	2,150.4	2,219.8
% of Overall Total	17.9%	17.8%	15.8%	16.0%	16.9%	16.7%
Yearly Change	na	0.4%	-12.7%	5.9%	7.7%	3.2%
Cumulative Change (based on '96-97)	na	0.4%	-12.3%	-7.1%	0.0%	3.2%
ESL	263.9	288.2	237.8	308.3	272.1	298.9
ABE	423.9	393.2	402.6	365.7	540.7	508.6
GED	359.8	357.4	277.7	278.5	271.4	245.8
AHS	518.6	506.4	330.6	311.5	283.2	251.2
PSR	584.8	615.2	638.1	733.5	783.1	915.3

Source: IRZ2202; OCCURS Annual Enrollment Rpt. ('01-02).

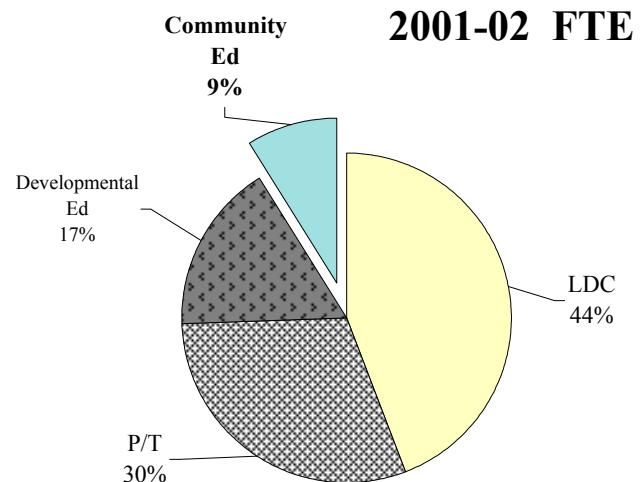
r:\profile\2001-02\fte\devel_ed.xls

Community Education FTE



FTE in the Community Education group are derived from courses in the Self-Improvement and Non-reimbursable reimbursement categories (part of the state's reporting system). Lane departments contributing to this group of FTE reimbursement categories include the Business Development & Contract Training, Workforce Development, Continuing Education & Educational Outreach, LCC at Cottage Grove and LCC at Florence.

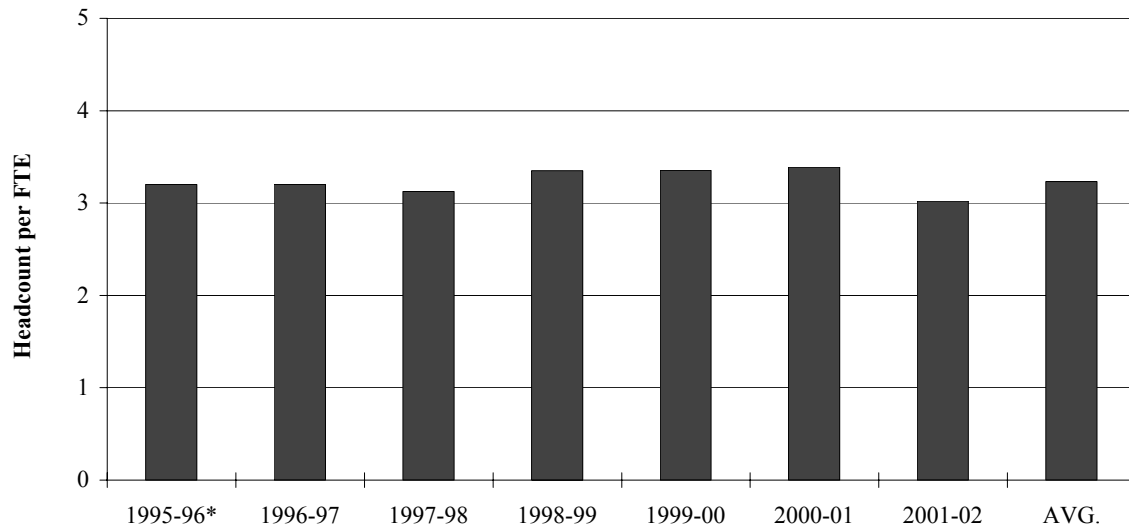
Note: Non-reimbursable FTE are not included in the state funding formula. They are derived from a particular category of courses and from out-of-state students enrolling in courses that would otherwise yield reimbursable FTE.



	1996-97	1997-98	1998-99	1999-00	2000-01	2001-02
Total Community Ed FTE	1,200.3	1,109.1	1,085.2	1,119.0	1,217.6	1,175.1
% of Overall Total	10.0%	9.1%	9.1%	9.0%	9.5%	8.9%
Yearly Change	na	-7.6%	-2.2%	3.1%	8.8%	-3.5%
Cumulative Change (based on '96-97)	na	-7.6%	-9.6%	-6.8%	1.4%	-2.1%
Self-Improvement	931.4	886.2	925.5	932.5	1,016.3	989.1
Non-Reimbursable	268.9	222.8	159.7	186.5	201.3	186.1

Source: OCCURS Annual Enrollment Rpts.

r:\profile\2001-02\fte\comm_ed.xls

Headcount per FTE

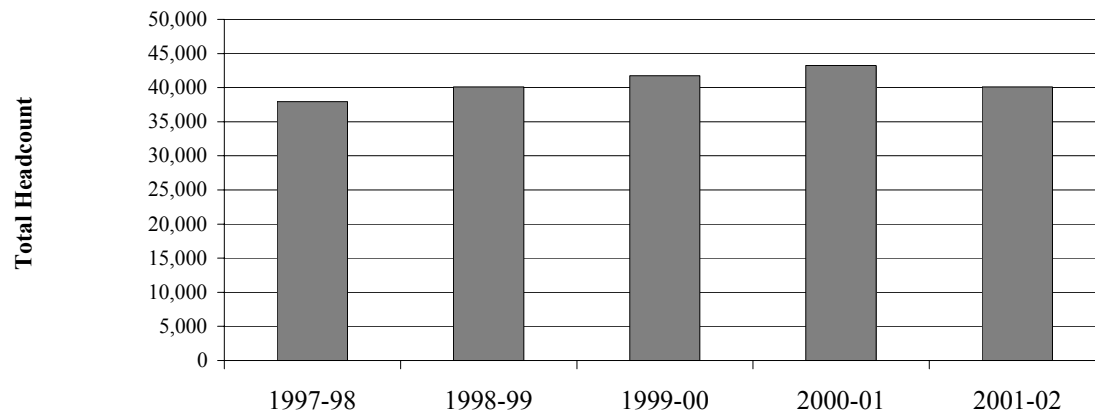
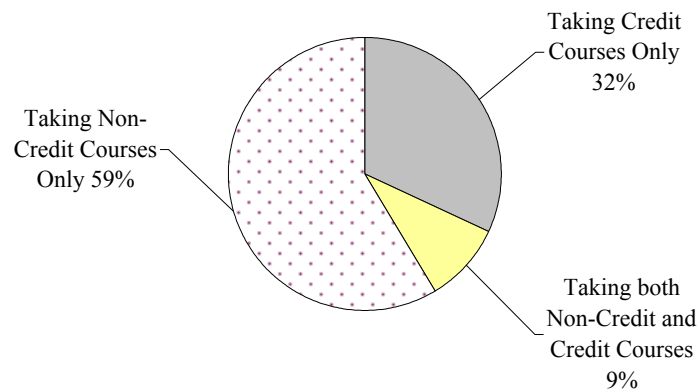
* Note: A new calculation of community college FTE was implemented beginning in 1995-96. An adjustment was made to the method used to calculate FTE for most credit classes for winter and spring terms 1999 which led to a slight decline in FTE for 1998-99.

The average headcount per FTE in the graph above is based on 1995-96 through 2001-02 ratios. In 2001-02, it took an average of 3.02 students to generate one 510-clock-hour FTE.

	1995-96*	1996-97	1997-98	1998-99	1999-00	2000-01	2001-02
Total FTE	12,141.8	12,007.3	12,148.8	11,968.3	12,449.4	12,760.1	13,265.1
Total Headcount	38,441	37,841	37,954	40,113	41,766	43,223	40,099
Headcount per FTE	3.17	3.15	3.12	3.35	3.35	3.39	3.02
Yearly Change	na	-0.5%	-0.9%	7.3%	0.1%	1.0%	-10.8%
Cumulative Change	na	-0.5%	-1.3%	5.9%	6.0%	7.0%	-4.5%

(based on '95-96)

Sources: FTE = IRZ2202; Headcount = OCCURS Student files

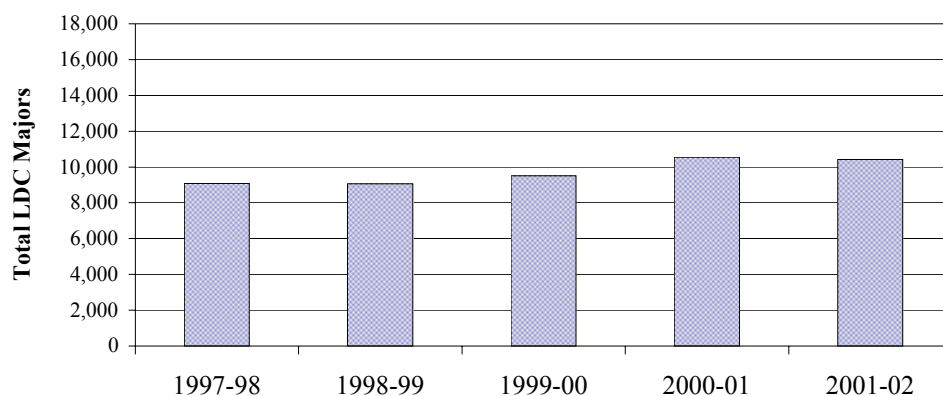
Total Headcount**2001-02 Headcount**

	1997-98	1998-99	1999-00	2000-01	2001-02
Total Headcount	37,954	40,113	41,766	43,223	40,099
Yearly Change	na	5.7%	4.1%	3.5%	-7.2%
Cumulative Change	na	5.7%	10.0%	13.9%	5.7%

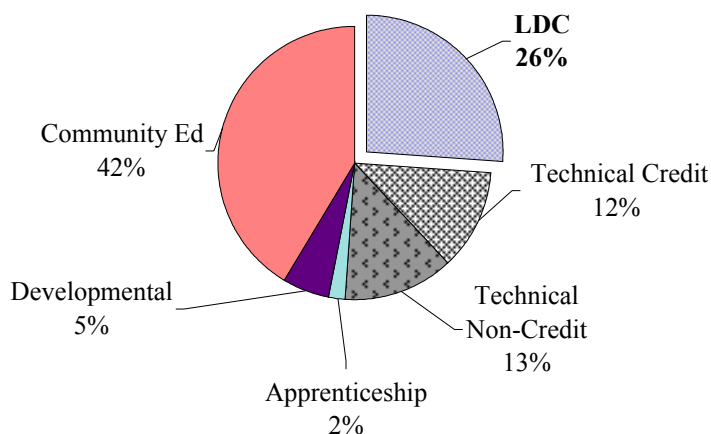
(based on '97-98)

Students were counted as credit students if they were enrolled in credit courses any term they attended Lane in 2001-02. Credit courses include credit, College High, and Tech Prep courses. Credit courses do not include Adult High School, Adult Basic Ed, and non-credit courses.

Lower Division Collegiate (Transfer) Majors -- Headcount



2001-02 Majors



Lower Division Collegiate (LDC) majors are students who have declared majors in Transfer programs. These majors include the AAOT, AS, and AG degree majors.

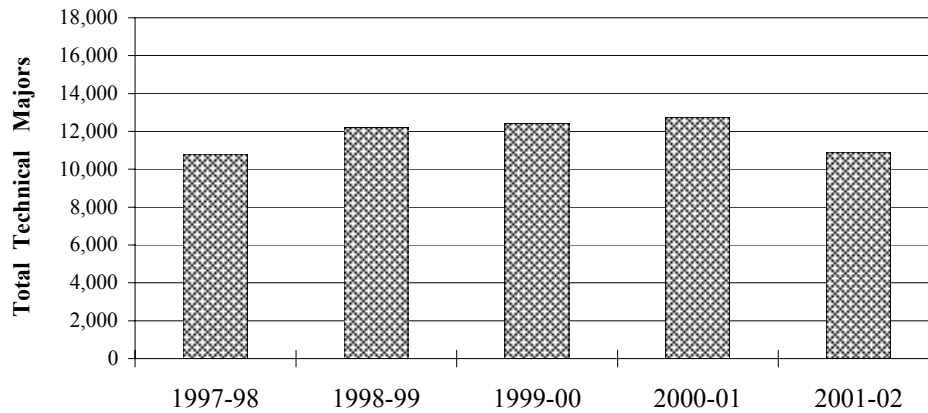
	1997-98	1998-99	1999-00	2000-01	2001-02
Total LDC Headcount	9,087	9,068	9,503	10,545	10,425
% of Overall Total	23.9%	22.6%	22.8%	24.4%	26.0%
Yearly Change	na	-0.2%	4.8%	11.0%	-1.1%
Cumulative Change	na	-0.2%	4.6%	16.0%	14.7%

(based on '97-98)

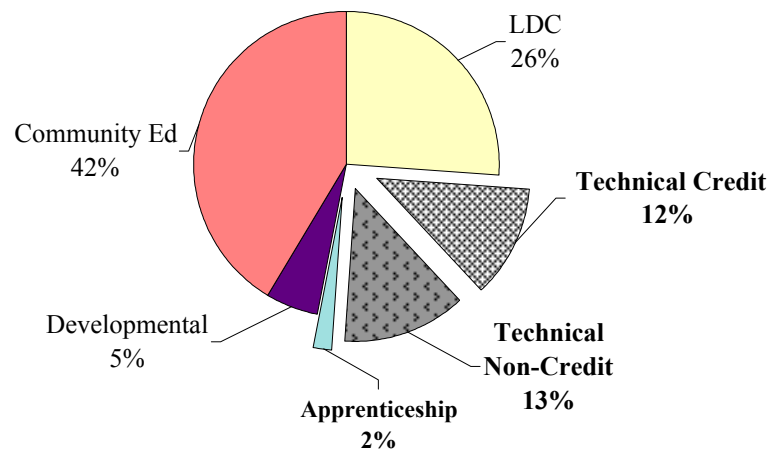
Source: OCCURS Student Files Unduplicated by Last Term Registered

r:\profile\01-02\hdcnt\A1A2prof.xls LDC Hdcnt

Technical Majors -- Headcount



2001-02 Majors



Technical majors are credit or non-credit students who are pursuing professional technical fields or training. Non-credit professional training includes massage therapy, court reporting, and short-term training.

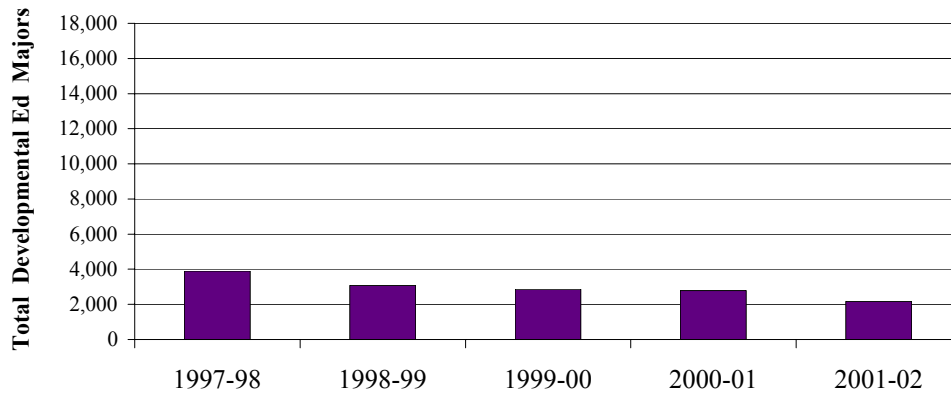
	1997-98	1998-99	1999-00	2000-01	2001-02
Total Technical Headcount	10,806	12,206	12,430	12,745	10,898
% of Overall Total	28.5%	30.4%	29.8%	29.5%	27.2%
Yearly Change	na	13.0%	1.8%	2.5%	-14.5%
Cumulative Change	na	13.0%	15.0%	17.9%	0.9%

(based on '97-98)

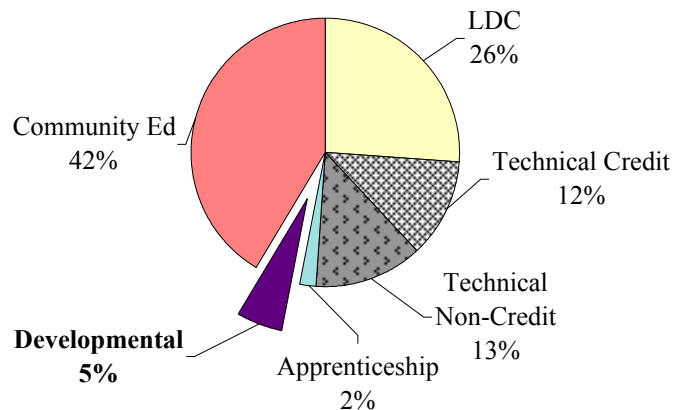
Source: OCCURS Student Files Unduplicated by Last Term Registered

r:\profile\01-02\hdcnt\A1A2prof.xls Tech Hdcnt

Developmental Education Majors -- Headcount



2001-02 Majors



Developmental education students are in programs such as Adult High School, GED, English as a Second Language, and Adult Basic Education.

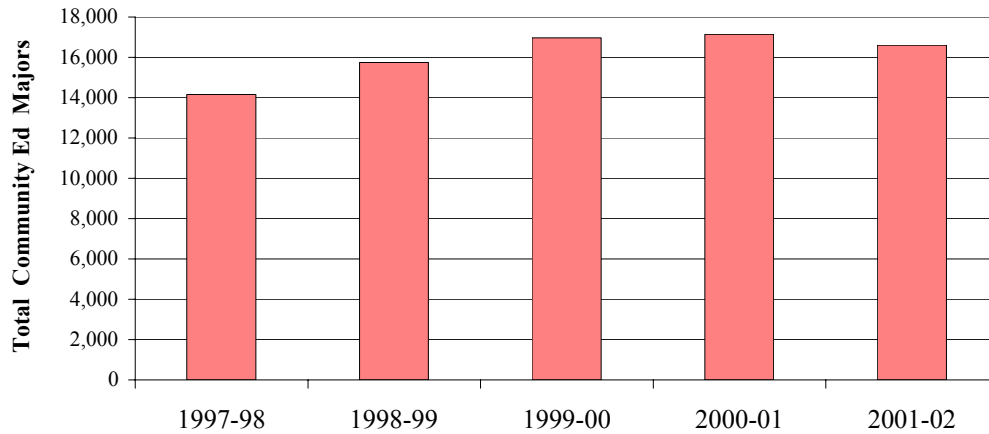
	1997-98	1998-99	1999-00	2000-01	2001-02
Total Developmental Ed Hdnt	3,902	3,087	2,866	2,783	2,165
% of Overall Total	10.3%	7.7%	6.9%	6.4%	5.4%
Yearly Change	na	-20.9%	-7.2%	-2.9%	-22.2%
Cumulative Change	na	-20.9%	-26.6%	-28.7%	-44.5%

(based on '97-98)

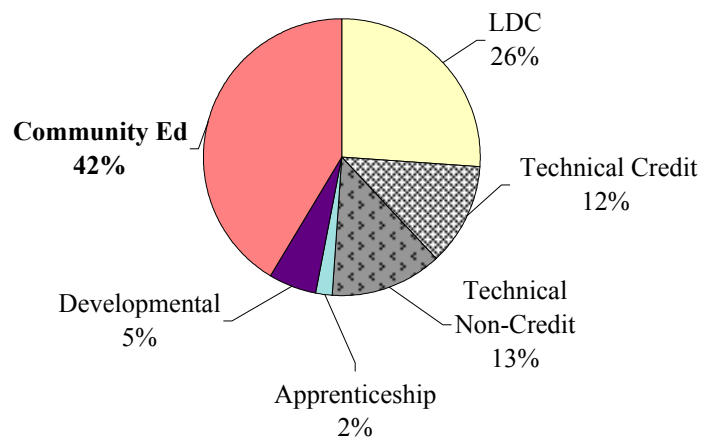
Source: OCCURS Student Files Unduplicated by Last Term Registered

r:\profile\01-02\hdnt\A1A2prof.xls Dev Ed

Community Education -- Headcount



2001-02 Majors



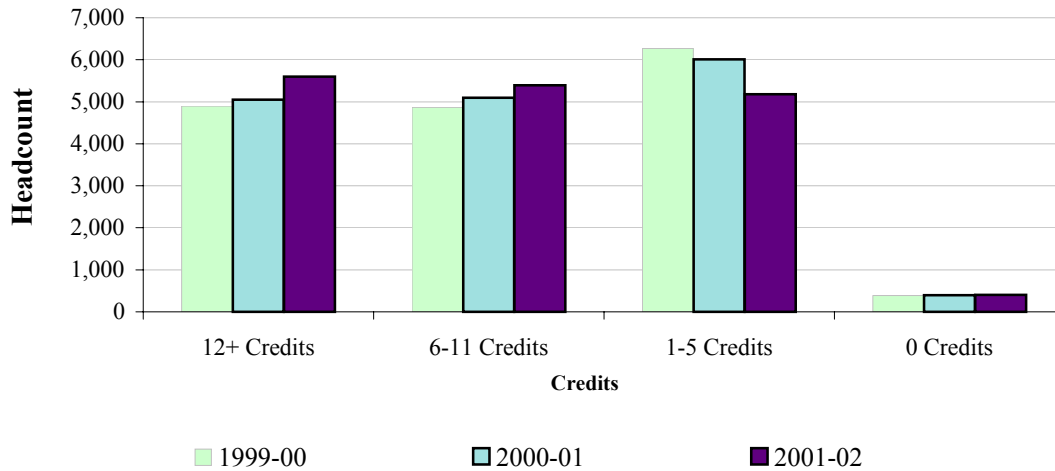
	1997-98	1998-99	1999-00	2000-01	2001-02
Total Community Ed	14,159	15,752	16,967	17,150	16,611
% of Overall Total	37.3%	39.3%	40.6%	39.7%	41.4%
Yearly Change	na	11.3%	7.7%	1.1%	-3.1%
Cumulative Change	na	11.3%	19.8%	21.1%	17.3%

(based on '97-98)

Source: OCCURS Student Files Unduplicated by Last Term Registered

r:\profile\01-02\hdcnt\A1A2prof.xls CommEd

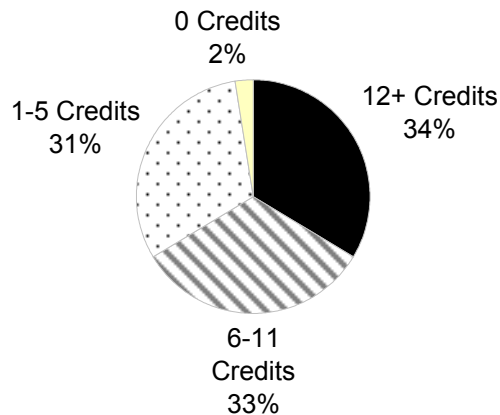
Enrollment by Credit Hours



Attempted Credits Last Term Attended in 2001-02

A full-time student is one who attempted 12+ credits his or her last term at Lane during 2001-02.

A student with zero attempted credits was a credit student at least one term during 2001-02, but who was a non-credit student the last term attended.



	1999-00		2000-01		2001-02	
Total Headcount	41,766		43,223		40,099	
<i>Credits</i>	#	%	#	%	#	%
12+ Credits	4,898	29.8%	5,049	30.5%	5,596	33.7%
6-11 Credits	4,864	29.6%	5,097	30.8%	5,395	32.5%
1-5 Credits	6,270	38.2%	6,012	36.3%	5,183	31.3%
0 Credits	387	2.4%	394	2.4%	407	2.5%
Totals	16,419	100%	16,552	100%	16,581	100%

Note: Credit students take credit, College High, or Tech Prep courses. Students taking only Adult High, Adult Basic Secondary Ed, or non-credit courses are not included.

Source: OCCURS Student Files Unduplicated by Last Term Registered

r:\profile\01-02\hdcnt\A1A2prof.xls CrHrs