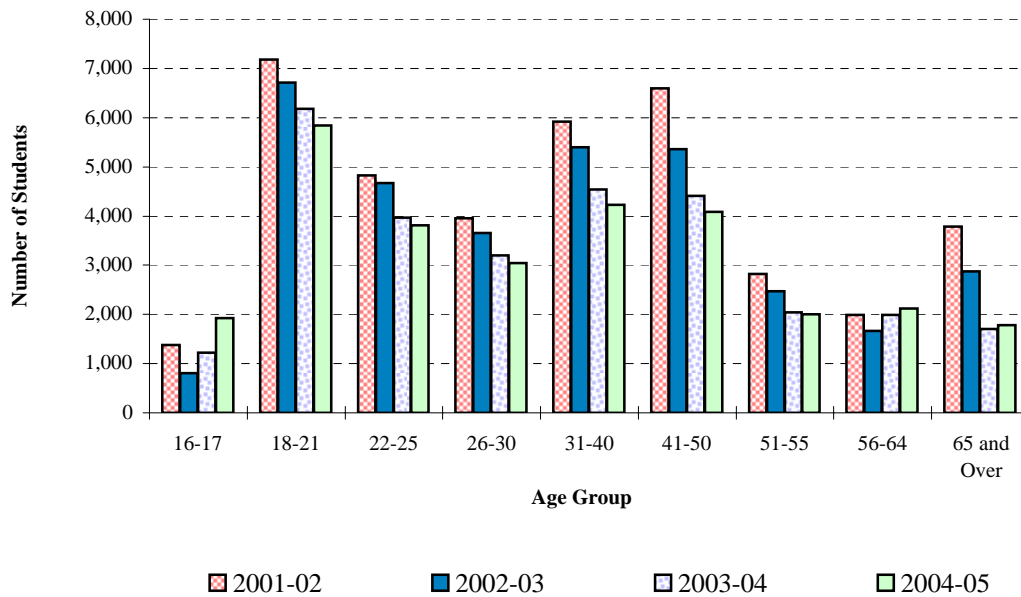


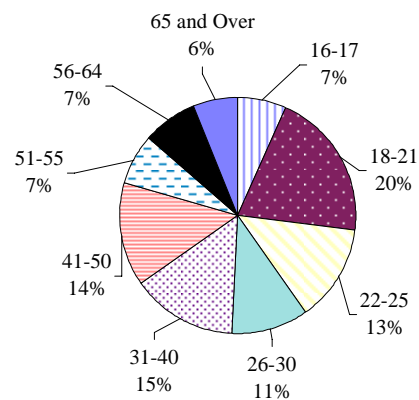
## *All Students by Age Group*

**Distribution of Age Groups by Year**



	2001-02	2002-03	2003-04	2004-05
Total Students	40,099	34,394	29,743	29,868
<b>Age</b>				
16-17	1,376	813	1,217	1,926
18-21	7,175	6,714	6,173	5,846
22-25	4,827	4,673	3,971	3,815
26-30	3,958	3,651	3,194	3,038
31-40	5,925	5,401	4,536	4,230
41-50	6,591	5,365	4,413	4,085
51-55	2,819	2,471	2,038	1,998
56-64	1,989	1,670	1,996	2,117
65 and Over	3,782	2,877	1,699	1,780
Unknown*	1,657	759	506	1,033
Average Age	37.4	36.6	35.5	35.4
Median Age	33	32	31	30

**Percent of Total 2004-05**



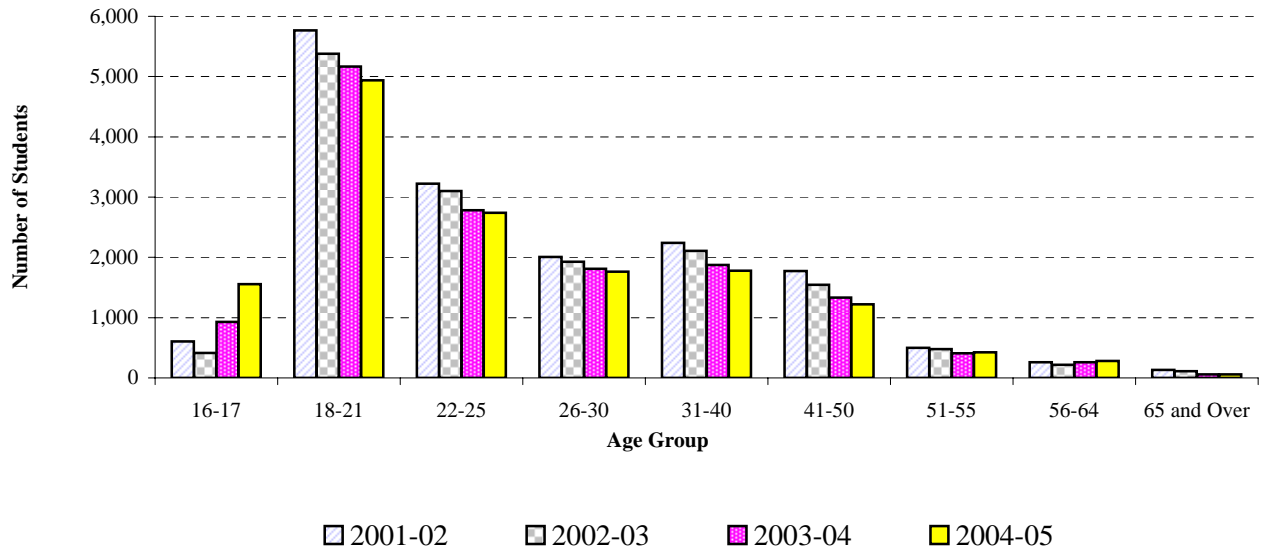
\*Unknown includes any students who are under 16 or over 99.

Source: OCCURS Student Files

r:\profile\04-05\hdcnt\0405prof.xls Age

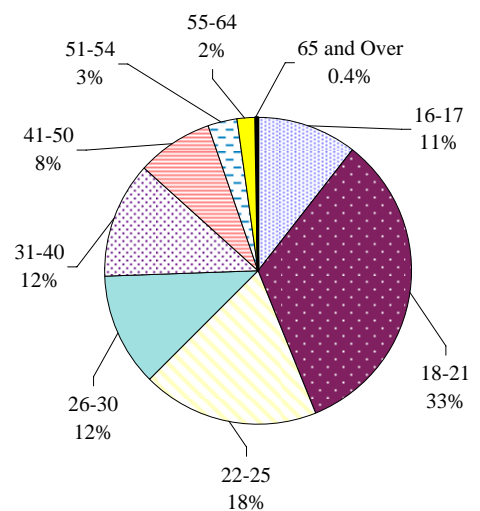
## *Credit Students by Age Group*

**Distribution of Age Groups by Year**



	2001-02	2002-03	2003-04	2004-05
Credit Students	16,581	15,299	14,923	15,505
<b>Age</b>				
16-17	604	416	929	1,554
18-21	5,767	5,377	5,167	4,940
22-25	3,221	3,102	2,783	2,742
26-30	2,006	1,925	1,813	1,763
31-40	2,241	2,108	1,876	1,779
41-50	1,775	1,544	1,333	1,219
51-55	499	477	410	425
56-64	258	216	260	282
65 and Over	131	112	57	56
Unknown*	79	22	295	745
Average Age	28.0	27.9	27.2	26.7
Median Age	24	24	23	23

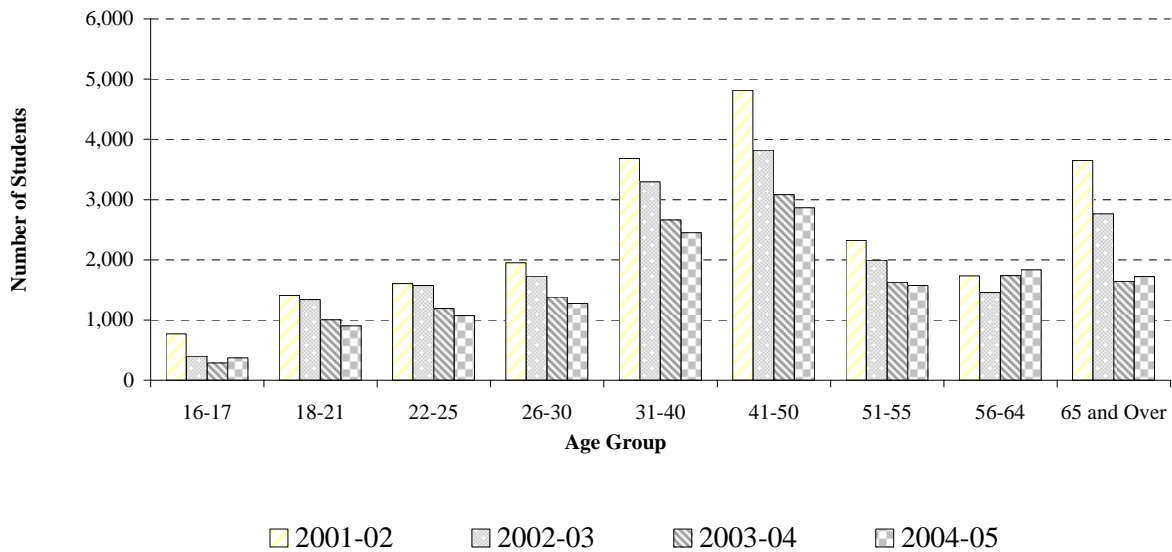
**Percent of Total  
2004-05 Credit Students**



\*Unknown includes any students who are under 16 or over 99.

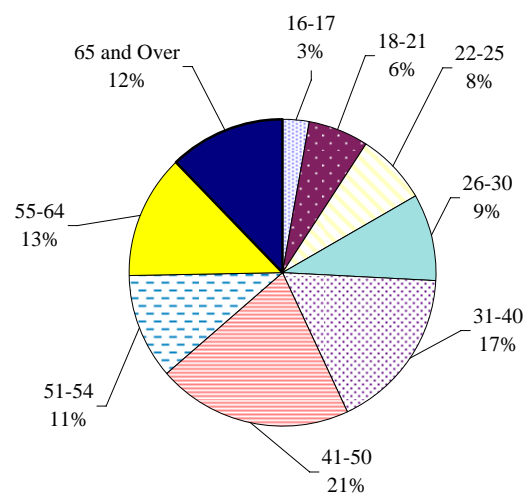
## *Non-Credit Students by Age Group*

**Distribution of Age Groups by Year**



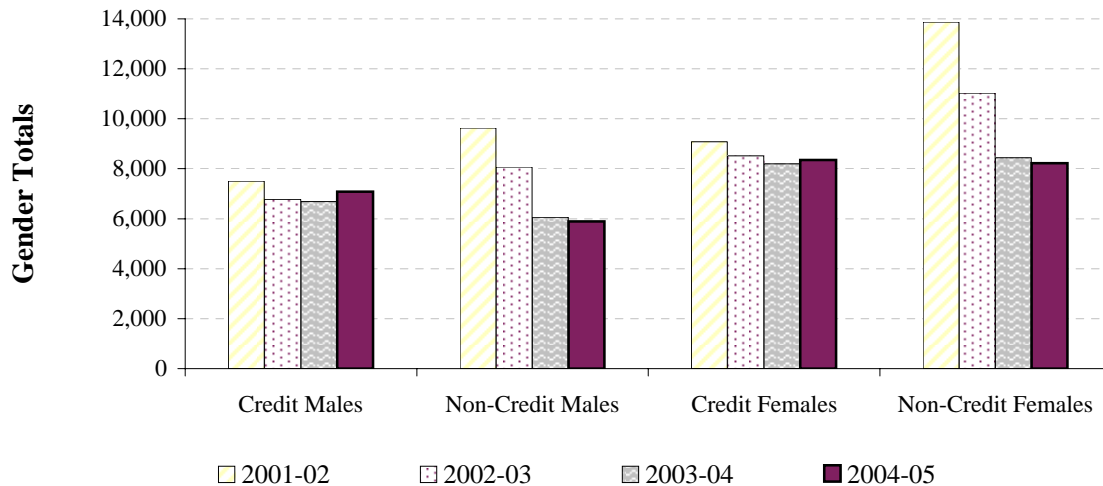
	2001-02	2002-03	2003-04	2004-05
Non-Credit	23,518	19,095	14,820	14,363
<b>Age</b>				
16-17	772	397	288	372
18-21	1,408	1,337	1,006	906
22-25	1,606	1,571	1,188	1,073
26-30	1,952	1,726	1,381	1,275
31-40	3,684	3,293	2,660	2,451
41-50	4,816	3,821	3,080	2,867
51-55	2,320	1,994	1,628	1,573
56-64	1,731	1,454	1,736	1,835
65 and Over	3,651	2,765	1,642	1,724
Unknown*	1,578	737	211	287
Average Age	44.3	43.7	43.8	44.4
Median Age	44	43	43	44

**Percent of Total  
2004-05 Non-Credit Students**



\*Unknown includes any students who are under 16 or over 99.

## *Gender of All Students*



	2001-02		2002-03		2003-04		2004-05	
Total Headcount	40,099		34,394		29,743		29,868	
	#	%	#	%	#	%	#	%
Total Males	17,126	42.7%	14,843	43.2%	12,739	42.8%	12,981	43.5%
Total Females	22,950	57.2%	19,542	56.8%	16,634	55.9%	16,577	55.5%
No response	23	0.1%	9	0.0%	370	1.2%	310	1.0%

### *Credit*

Males	7,500	45.2%	6,778	44.3%	6,685	44.8%	7,086	45.7%
Females	9,079	54.8%	8,520	55.7%	8,193	54.9%	8,355	53.9%
No response	2	0.0%	1	0.0%	45	0.3%	64	0.4%
Total	16,581	100.0%	15,299	100.0%	14,923	100.0%	15,505	100.0%

### *Non-Credit*

Males	9,626	40.9%	8,065	42.2%	6,054	40.9%	5,895	41.0%
Females	13,871	59.0%	11,022	57.7%	8,441	57.0%	8,222	57.2%
No response	21	0.1%	8	0.0%	325	2.2%	246	1.7%
Total	23,518	100.0%	19,095	100.0%	14,820	100.0%	14,363	100.0%

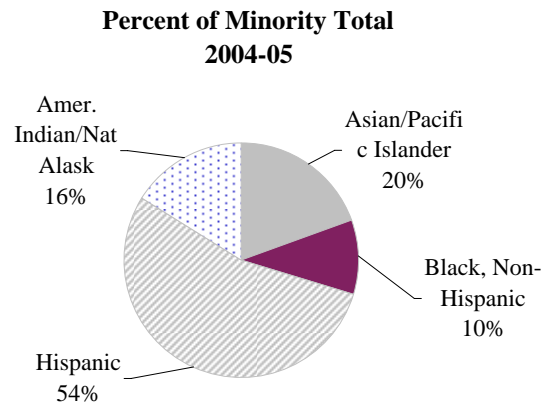
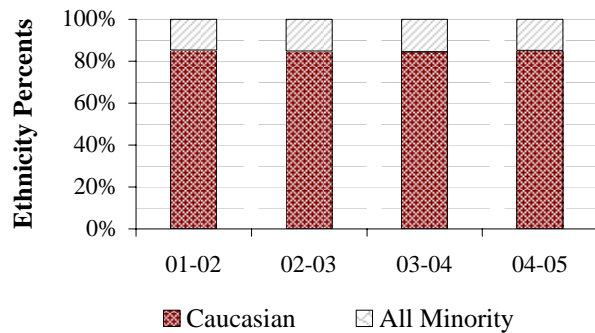
A credit student is a student who took any credit class during the year.

A non-credit student is defined as having taken only non-credit classes during the year.

Source: OCCURS Student Files Unduplicated by Last Term Registered

r:\profile\04-05\hdcnt\0405prof.xls Gender

# *All Students by Ethnicity Status*



	2001-02		2002-03		2003-04		2004-05	
Total Headcount	40,099		34,394		29,743		29,868	
	#	% known	#	% known	#	% known	#	% known
Asian/Pacific Islander	792	3.0%	748	3.2%	628	3.0%	575	2.9%
Black, Non-Hispanic	301	1.1%	295	1.3%	291	1.4%	303	1.5%
Hispanic	2,148	8.2%	1,881	8.1%	1,782	8.6%	1,602	8.1%
Amer. Indian/Nat Alask	667	2.5%	593	2.6%	505	2.4%	476	2.4%
White, Non-Hispanic	22,376	85.1%	19,609	84.8%	17,452	84.5%	16,735	85.0%
International	562		475		340		363	1.8%
Unknown	13,253		10,793		8,745		9,814	

## **Credit**

	#	% known	#	% known	#	% known	#	% known
Asian/Pacific Islander	486	3.5%	427	3.3%	370	3.1%	349	3.0%
Black, Non-Hispanic	209	1.5%	186	1.4%	178	1.5%	190	1.6%
Hispanic	573	4.1%	577	4.4%	496	4.1%	536	4.6%
Amer. Indian/Nat Alask	457	3.3%	432	3.3%	353	2.9%	326	2.8%
White, Non-Hispanic	12,259	87.7%	11,427	87.6%	10,574	88.3%	10,213	87.9%
International	426		329		234		326	
Unknown	2,171		1,921		2,718		3,565	
	16,581	100.0%	15,299	100.0%	14,923	100.0%	15,505	100.0%

## **Non-Credit**

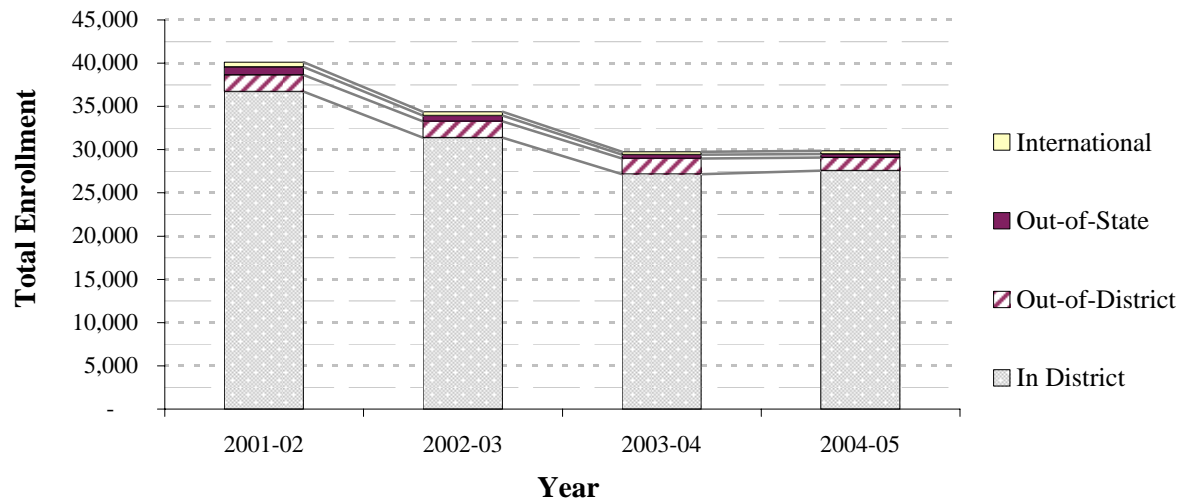
	#	% known	#	% known	#	% known	#	% known
Asian/Pacific Islander	306	2.5%	321	3.2%	258	3.0%	226	2.8%
Black, Non-Hispanic	92	0.7%	109	1.1%	113	1.3%	113	1.4%
Hispanic	1,575	12.8%	1,304	12.9%	1,286	14.8%	1,066	13.2%
Amer. Indian/Nat Alask	210	1.7%	161	1.6%	152	1.7%	150	1.9%
White, Non-Hispanic	10,117	82.3%	8,182	81.2%	6,878	79.2%	6,522	80.7%
International	136		146		106		37	
Unknown	11,082		8,872		6,027		6,249	
	23,518	100.0%	19,095	100.0%	14,820	100.0%	14,363	100.0%

A credit student is a student who took any credit class during the year.

Source: OCCURS Student Files Unduplicated by Last Term Registered

r:\profile\04-05\hdcnt\0405prof.xls Ethnic

## *Enrollment by Residency Status*



	2001-02		2002-03		2003-04		2004-05	
Total Headcount	40,099		34,394		29,743		29,868	
	#	% of Total	#	% of Total	#	% of Total	#	% of Total
In District	36,729	91.6%	31,374	91.2%	27,181	91.4%	27,553	92.2%
Out-of-District	1,917	4.8%	1,909	5.6%	1,810	6.1%	1,548	5.2%
Out-of-State	902	2.2%	636	1.8%	412	1.4%	404	1.4%
International	551	1.4%	475	1.4%	340	1.1%	363	1.2%

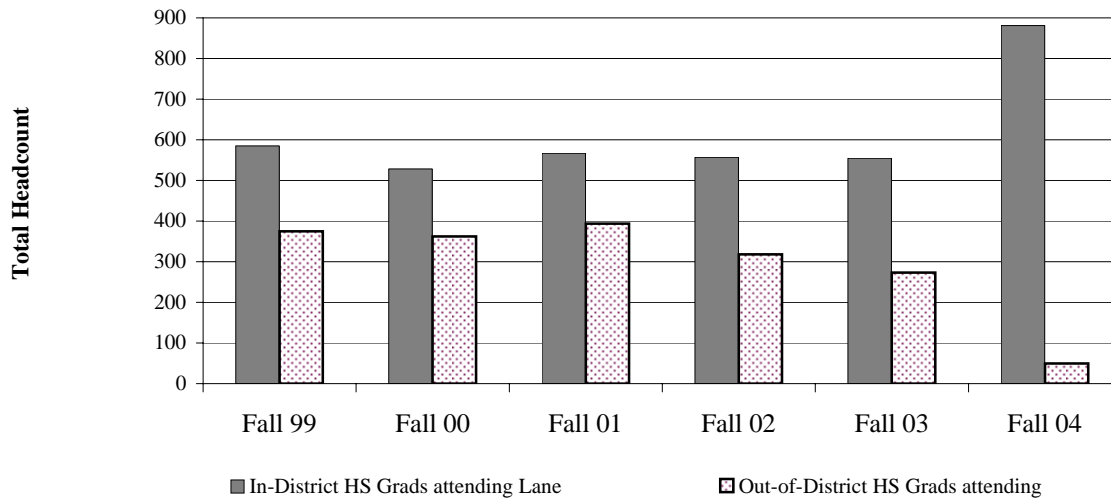
<i>Credit</i>	#	% of Credit	#	% of Credit	#	% of Credit	#	% of Credit
In District	14,141	85.3%	12,884	84.2%	13,045	87.4%	14,041	90.6%
Out-of-District	1,579	9.5%	1,627	10.6%	1,274	8.5%	876	5.6%
Out-of-State	435	2.6%	459	3.0%	370	2.5%	351	2.3%
International	426	2.6%	329	2.2%	234	1.6%	237	1.5%
	16,581	100.0%	15,299	100.0%	14,923	100.0%	15,505	100.0%

<i>Non-Credit</i>	#	% Non-Cr	#	% Non-Cr	#	% Non-Cr	#	% Non-Cr
In District	22,588	96.0%	18,490	96.8%	14,136	95.4%	13,512	94.1%
Out-of-District	338	1.4%	282	1.5%	536	3.6%	672	4.7%
Out-of-State	467	2.0%	177	0.9%	42	0.3%	53	0.4%
International	125	0.5%	146	0.8%	106	0.7%	126	0.9%
	23,518	100.0%	19,095	100.0%	14,820	100.0%	14,363	100.0%

Source: OCCURS Student Files Unduplicated by Last Term Registered

r:\profile\04-05\hdcnt\0405prof.xls Res

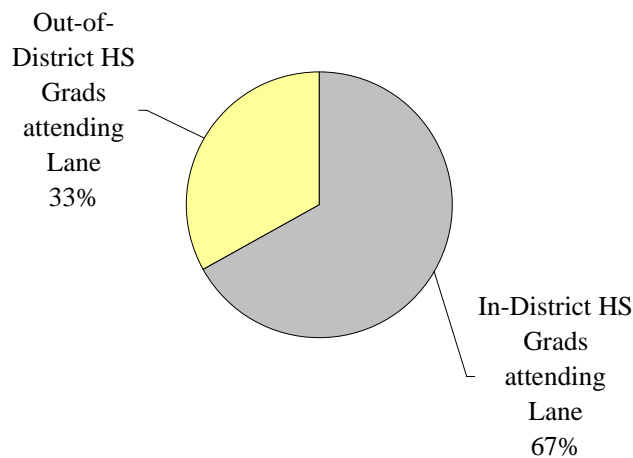
## ***Recent High School Graduates Attending Lane***



### **Recent HS Grads Attending Lane Fall 2003**

These data represent the number of June high school graduates who enrolled at Lane in the subsequent fall term.

Note: GED completers and home schooled students are not included in counts of in-district HS grads attending Lane.

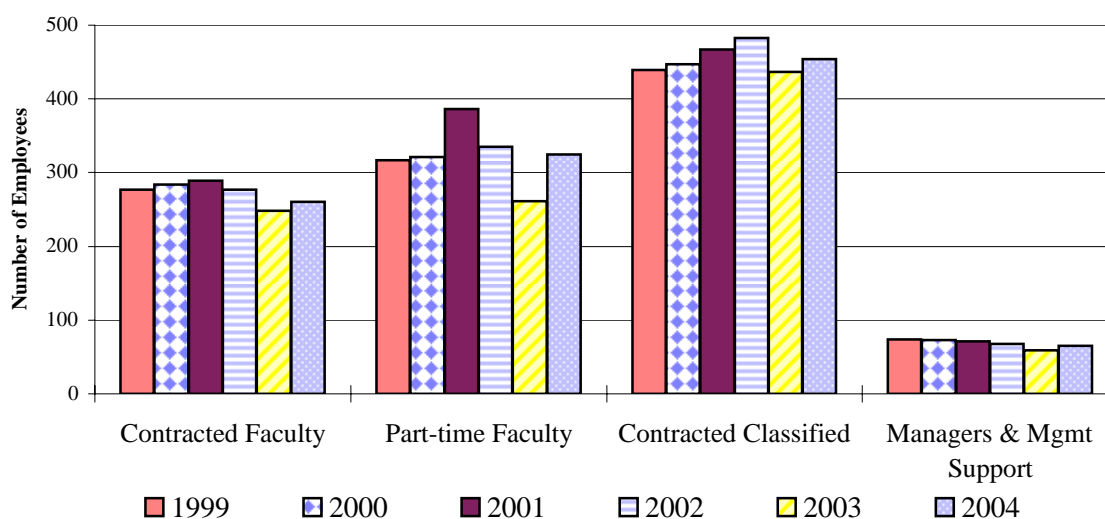


	Fall 99	Fall 00	Fall 01	Fall 02	Fall 03	Fall 04
In-District June HS Grads	3,015	3,034	2,953	3,220	3,378	
In-District HS Grads attending Lane	585	528	567	557	554	881
Out-of-District HS Grads attending	375	362	394	318	273	50
% of In-District June HS Grads attending Lane Fall term	19.4%	17.4%	19.2%	17.3%	16.4%	
Total HS Grads attending Lane	960	890	961	875	827	931

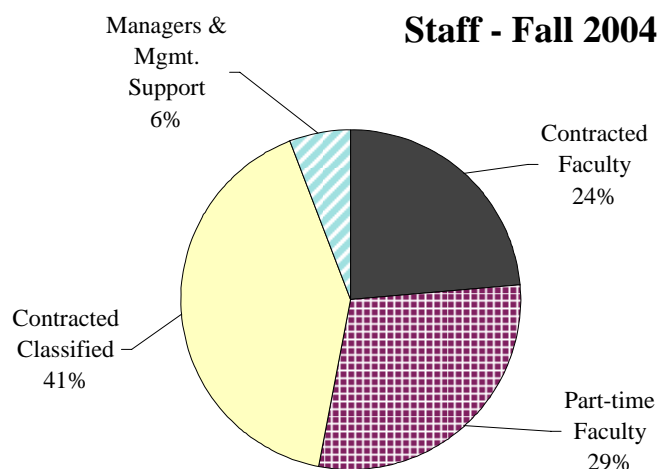
Source: IRZ1040 and IRZ1042; Oregon Dept of Education Report of High School Completers -- SF99-00; ODE file of HS Grads beginning 2000.

r:\profile\04-05\hdent\0405prof.xls Tot Hdent

## *Number of Staff Fall Term*



The number of staff by group is reported after the 4th week of fall term.

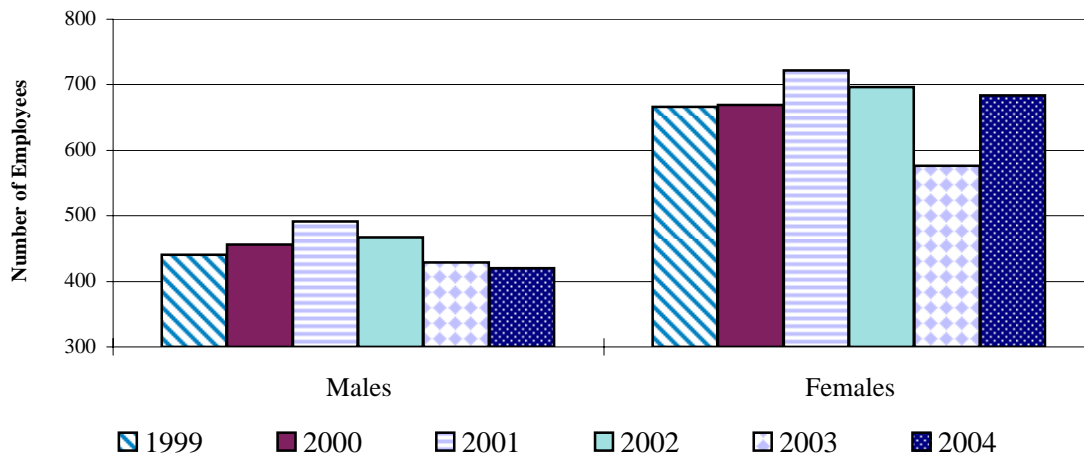


	1999	2000	2001	2002	2003	2004
Total Staff	1,107	1,125	1,213	1,163	1005	1104
Total Faculty	594	605	675	612	509	585
Contracted Faculty	277	284	289	277	248	260
Part-time Faculty	317	321	386	335	261	325
Contracted Classified	439	447	467	483	437	454
Managers & Mgmt. Support	74	73	71	68	59	65

Source: Personnel Services.

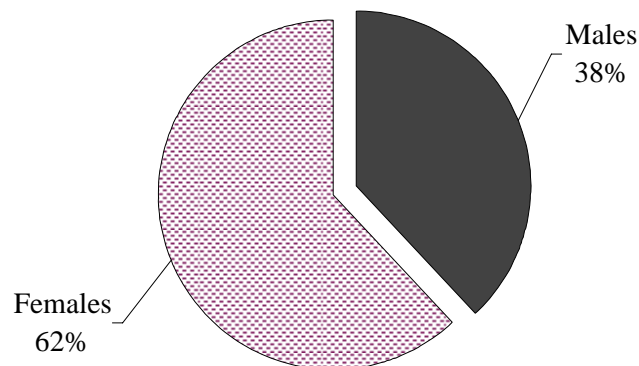


## *Staff by Gender*



## **Staff - Fall 2004**

The number of staff by gender is reported after the 4th week of fall term.

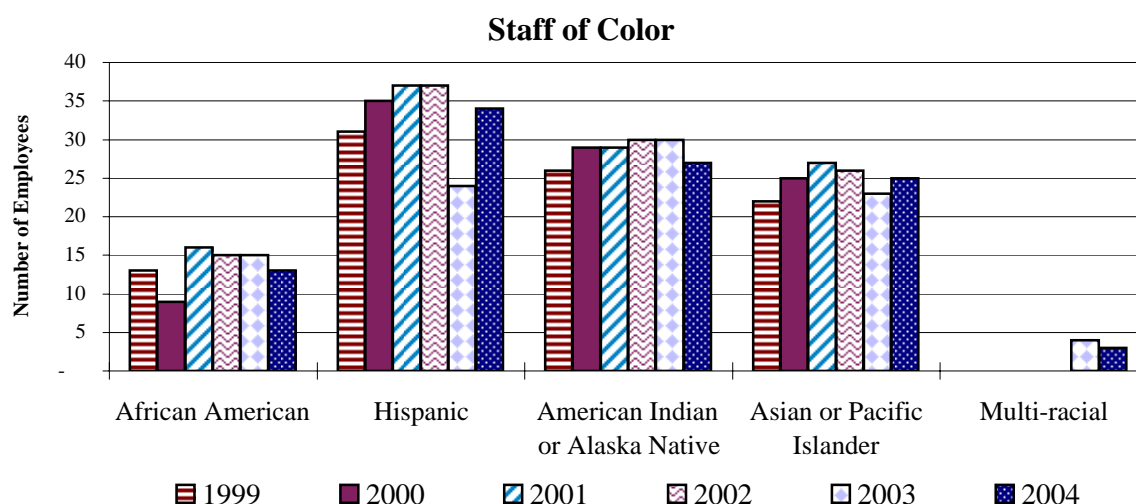


	1999	2000	2001	2002	2003	2004
<b>Total Staff *</b>	1,107	1,125	1,213	1,163	1,005	1,104
<b>Males</b>	441	456	491	467	429	420
Males as a Percent of Total	39.8%	40.5%	40.5%	40.2%	42.7%	38.0%
<b>Females</b>	666	669	722	696	576	684
Females as a Percent of Total	60.2%	59.5%	59.5%	59.8%	57.3%	62.0%

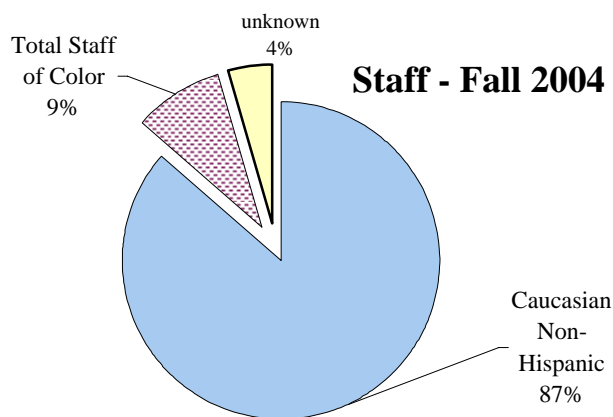
\* Total staff includes: contracted faculty, contracted classified, managers, part-time credit faculty, and management support.

Source: Human Resources.

# *Staff by Ethnicity Status*



The number of staff by group is reported after the 4th week of fall term. Ethnicity status is self-reported.



	1999	2000	2001	2002	2003	2004
Total Staff * (fall terms)	1,107	1,125	1,213	1,163	1,005	1,104
Caucasian Non-Hispanic	994	995	1,050	1,021	884	954
Total Staff of Color	92	98	109	108	96	102
African American	13	9	16	15	15	13
Hispanic	31	35	37	37	24	34
American Indian or Alaska Native	26	29	29	30	30	27
Asian or Pacific Islander	22	25	27	26	23	25
Multi-racial					4	3
unknown ethnicity	21	32	54	34	25	48

\* Total staff includes: contracted faculty, part-time credit faculty, contracted classified, managers, and management support.

Source: IPEDS Fall Staff Surveys and Personnel Services queries.