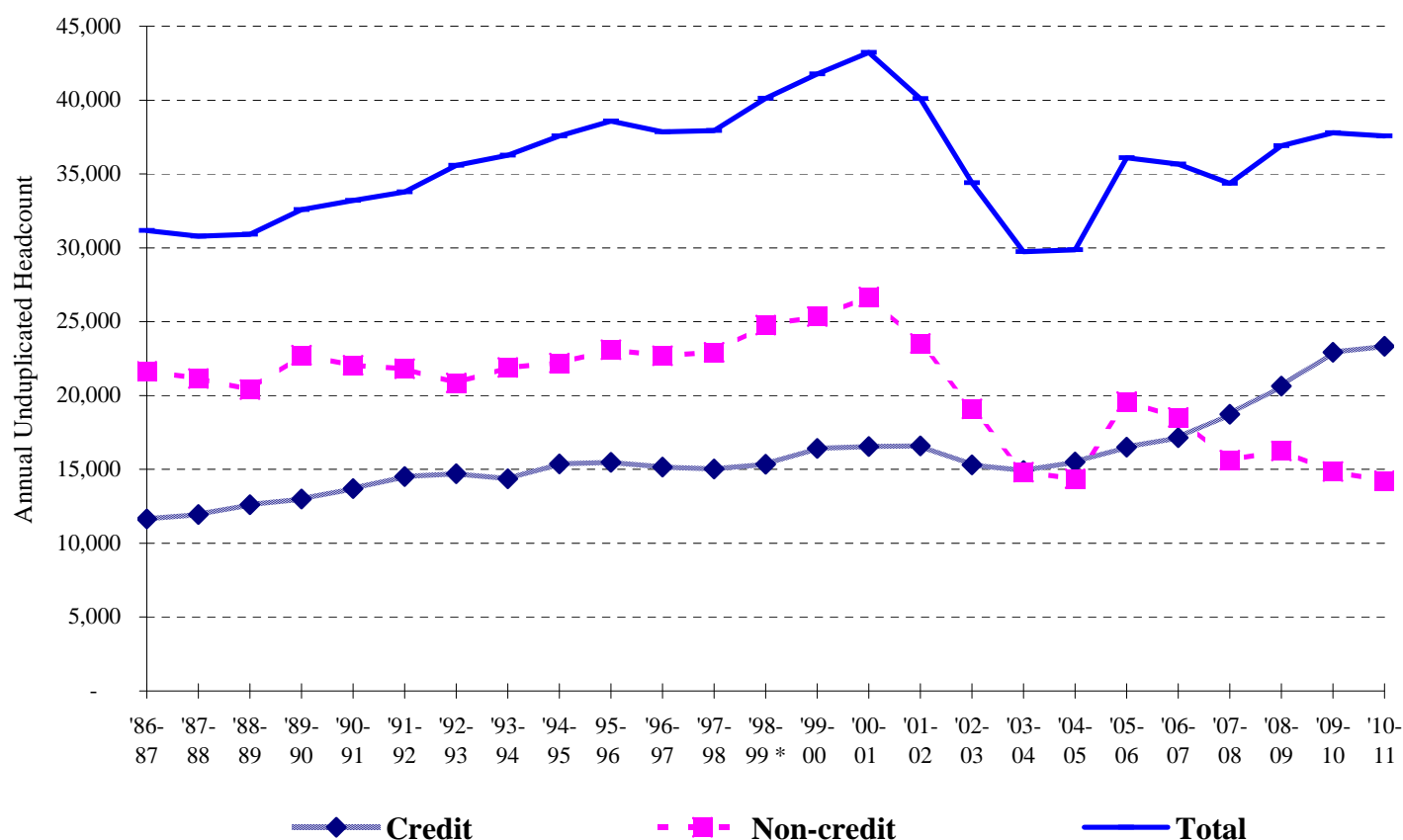


Key Benchmarks -- LANE Community College

Unduplicated Student Headcount

1986-87 through 2010-2011



Total unduplicated headcount for Lane was 37,561 in 2010-11 -- this was a 0.6% decrease compared to the total headcount in 2009-10 (37,783 students). Total Lane headcount has increased 20.5% since 1986-87.

Total headcount in credit classes for 2010-11 was 23,334 -- this was an increase of 1.8% compared to 2009-10 when 22,925 students were enrolled. Annual credit student headcount has increased 100% since 1986-87.

Total Headcount in non-credit classes for 2010-11 was 14,227 -- this was a decrease of 4.2% compared to 2009-10 when 14,858 students were enrolled. Annual non-credit student headcount has decreased 34% since 1986-87.

* **Notes:** 1) Beginning with 1998-99, a credit student on an annual basis is one who enrolled in a credit class. 2) 2010-11 data are based on enrollment data submitted to ODCCWD following completion of the annual ODCCWD FTE Audit.

Data Source: IRZ2100 through 1997-98; Lane's OCCURS Student Information System.

Institutional Research, Assessment & Planning (August 22, 2011)

w:\irap\benchmark\2011-12\students\stuhdct2.xls