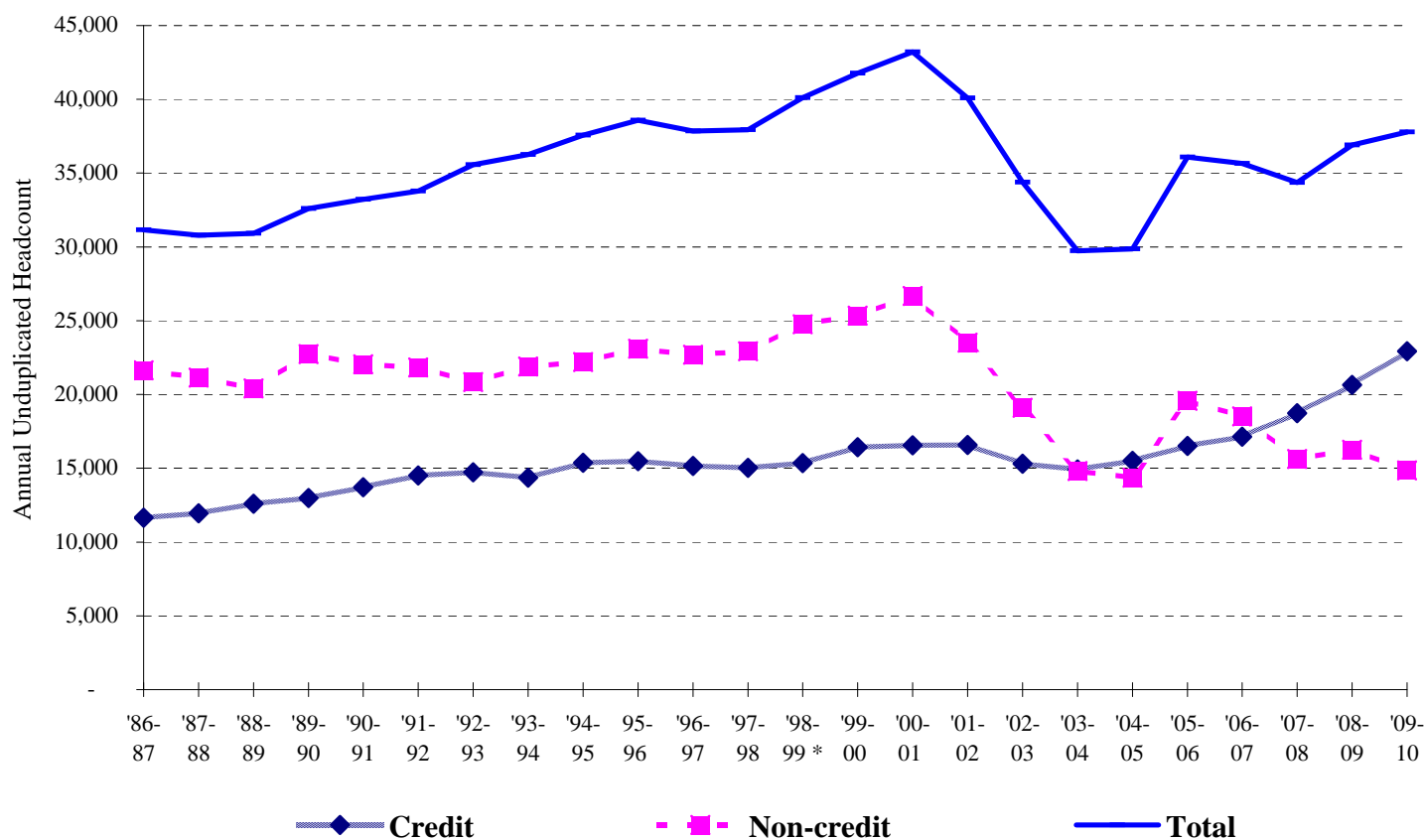


# Key Benchmarks -- LANE Community College

## Unduplicated Student Headcount

1986-87 through 2009-2010



**Total unduplicated headcount** for Lane was 37,783 in 2009-10 -- this is a 2.4% increase compared to the total headcount in 2008-09 (36,899 students). Total Lane headcount has increased 21.2% since 1986-87.

**Enrollment in credit classes** for 2009-10 was 22,925 -- this is an increase of 11.1% compared to 2008-09 when 20,643 students were enrolled. Annual credit student headcount has increased 97% since 1986-87.

**Enrollment in non-credit classes** for 2009-10 was 14,858 -- this is a decrease of 8.6% compared to 2008-09 when 16,256 students were enrolled. Annual non-credit student headcount has decreased 31% since 1986-87.

Total unduplicated headcount across all Oregon community colleges decreased 0.8% in 2009-10.

\* **Notes:** 1) Beginning with 1998-99, a credit student on an annual basis is one who enrolled in a credit class. 2) 2009-10 data are based on enrollment data submitted to ODCCWD prior to official end of the annual ODCCWD FTE Audit.

**Data Source:** IRZ2100 through 1997-98; Lane's OCCURS Student Information System.

Institutional Research, Assessment & Planning (September 30, 2010)

w:\irap\benchmark\2010-11\students\stuhdct2.xls