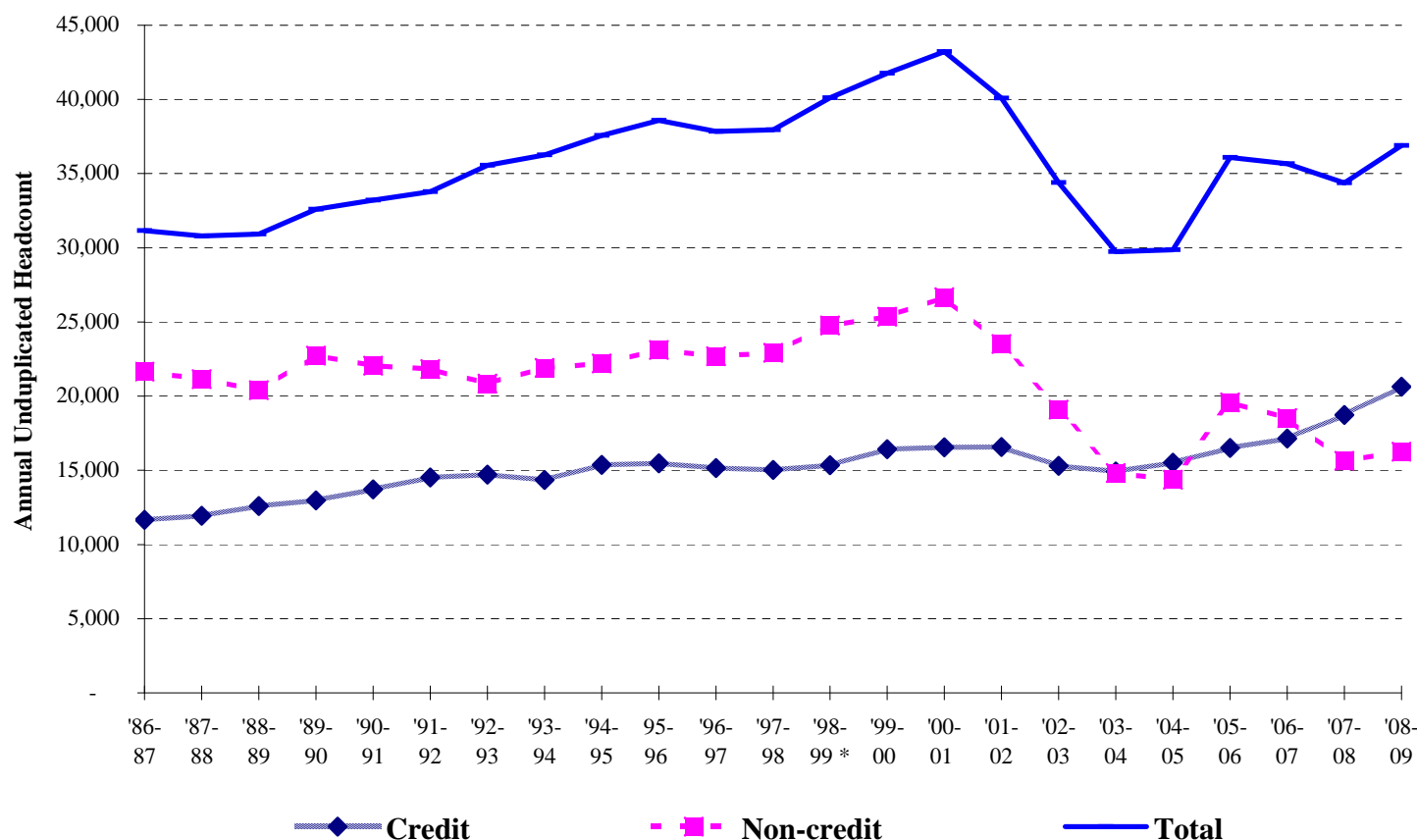


Key Benchmarks -- LANE Community College

Unduplicated Student Headcount

1986-87 through 2008-2009



Total unduplicated headcount for Lane was 36,899 in 2008-09 -- this is a 7.4% increase compared to the total headcount in 2007-08 (34,364 students). Total Lane headcount has increased 18.4% since 1986-87.

Enrollment in credit classes for 2008-09 was 20,643 -- this is an increase of 10.2% compared to 2007-08 when 18,730 students were enrolled. Annual credit student headcount has increased 77% since 1986-87.

Enrollment in non-credit classes for 2008-09 was 16,256 -- this is an increase of 4.0% compared to 2007-08 when 15,634 students were enrolled. Annual non-credit student headcount has decreased 25% since 1986-87.

Total unduplicated headcount across all Oregon community colleges decreased 0.3% in 2008-09.

* **Notes:** 1) Beginning with 1998-99, a credit student on an annual basis is one who enrolled in a credit class. 2) 2007-08 data are based on enrollment data submitted to ODCCWD prior to official end of the annual ODCCWD FTE Audit.

Data Source: IRZ2100 through 1997-98; Lane's OCCURS Student Information System.

Institutional Research, Assessment & Planning (October 22, 2009)

c:\irap\benchmark\2009-10\students\stuhdct2.xls