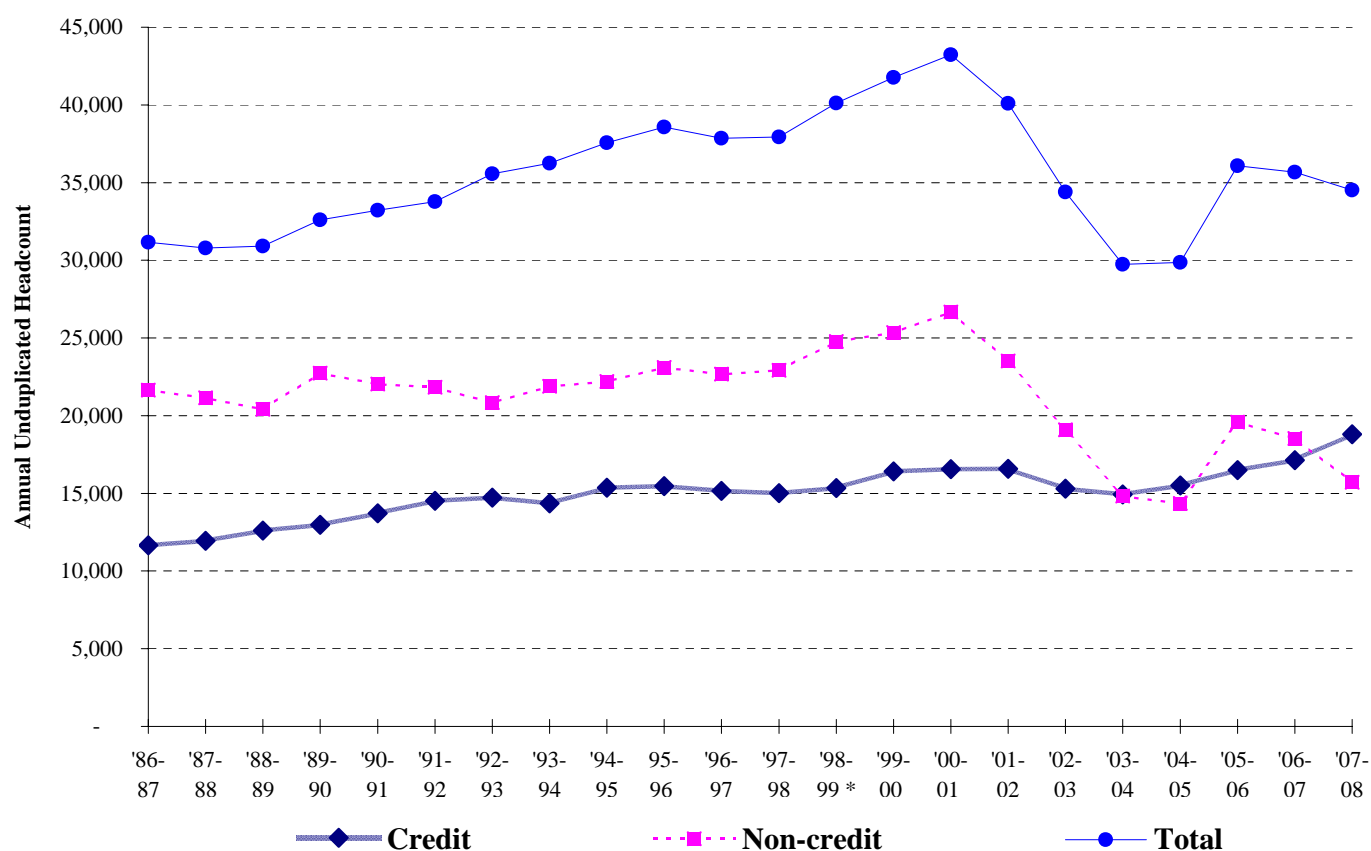


Key Benchmarks -- LANE Community College

Unduplicated Student Headcount

1986-87 through 2007-2008



Analysis and Action: Total unduplicated headcount for Lane was 34,508 in 2007-08 -- this is a 3.2% decline compared to the total headcount in 2006-07 (35,666 students). Total Lane headcount has increased 10.7% since 1986-87. **Enrollment in credit classes** for 2007-08 was 18,796 -- this is an increase of 9.7% compared to 2006-07 when 17,140 students were enrolled. Annual credit student headcount has increased 61% since 1986-87. **Enrollment in non-credit classes** for 2007-08 was 15,712 -- this is a decrease of 15.2% compared to 2006-07 when 18,526 students were enrolled. Annual non-credit student headcount has decreased 27% since 1986-87.

* **Notes:** 1) Beginning with 1998-99, a credit student on an annual basis is one who enrolled in a credit class. 2) 2007-08 data are based on enrollment data submitted to ODCCWD prior to official end of the annual ODCCWD FTE Audit. 3) 2007-08 enrollment data from all Oregon community colleges is not yet available from ODCCWD.

Data Source: IRZ2100 through 1997-98; Lane's OCCURS Student Information System.

Institutional Research, Assessment & Planning (September 25, 2008)

c:\irap\benchmark\2008-09\stuhdct2.xls