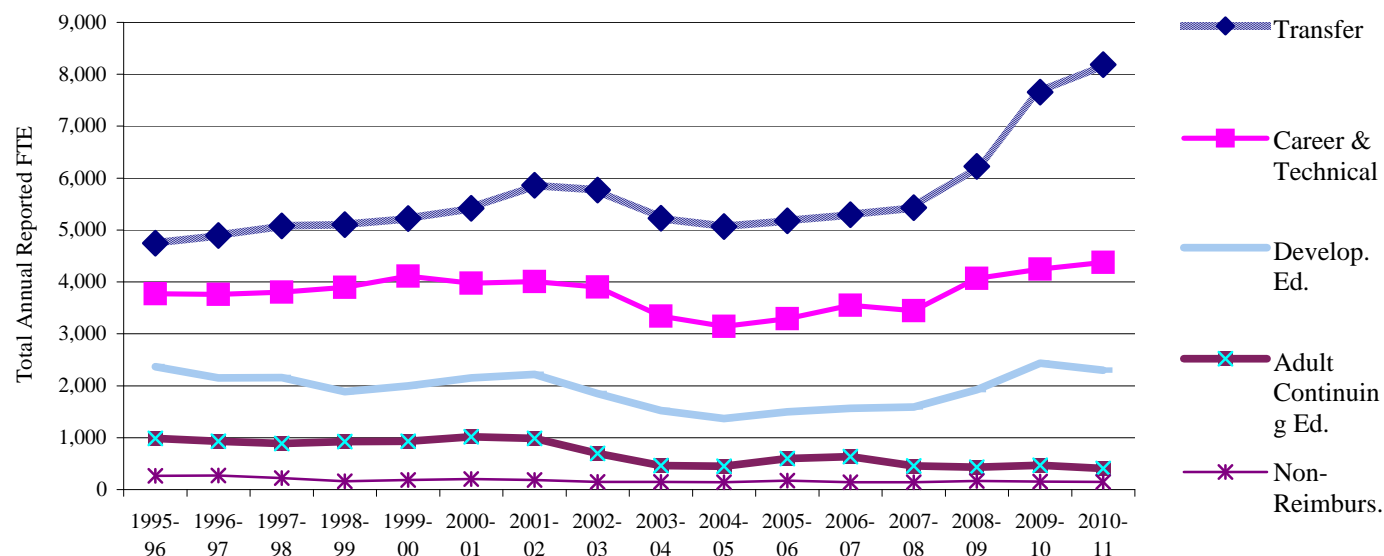


Key Benchmarks -- LANE Community College

Student FTE by Reimbursement Category



Category	2004-05	2005-06	2006-07	2007-08	2008-09	2009-10	2010-11
Transfer	5,068	5,181	5,296	5,429	6,226	7,654	8,186
Career & Technical	3,144	3,291	3,549	3,448	4,069	4,248	4,377
Developmental Ed.	1,366	1,496	1,565	1,593	1,922	2,434	2,298
Adult Continuing Ed.	451	598	635	456	433	470	407
Non-Reimbursable	145	172	144	139	166	152	150
Total Reported FTE	10,174	10,738	11,189	11,065	12,817	14,958	15,417

Analysis and Action: In 2010-11, Lane's total Reported FTE increased 3.1% compared to 2009-10.

FTE change by types of courses during 2010-11 ==> Transfer increased 6.9%; Career & Technical increased 3.0%; Developmental Ed. decreased 5.6%; Adult Continuing Ed. decreased 13.4%; Non-reimbursable decreased 1.5%.

Focused enrollment management strategies and tools designed to improve student access to needed courses, retention, and success are being developed, evaluated, and implemented; these, along with a continuing sluggish economy, should contribute to FTE growth in credit courses in 2011-12.

Notes: 1. *Developmental Ed.* courses include ESL, ABE, AHS, GED, and post-secondary remedial courses.

2. *Career & Technical* courses include courses in the reimbursement categories of Professional Technical Preparatory, Professional Technical Supplementary, and Apprenticeship.

3. The Self-Improvement category was changed to Adult Continuing Edn. (ACE) during the 2002 Special Legislative Session and classes that are not health, safety, or workforce-related are no longer eligible for state reimbursement funding.

4. 2.5% of Lane's '10-11 total reported FTE was non-reimbursable; these FTE are derived from: a) courses that meet state guidelines for this reimbursement category and b) from out-of-state students -- even when they are enrolled in reimbursable courses.

5. "Hold Harmless" FTE are not included in data reported above.

Data Sources: OCCURS Annual Enrollment Reports. 2010-11 data derived before final FTE Audit decisions by CCWD.