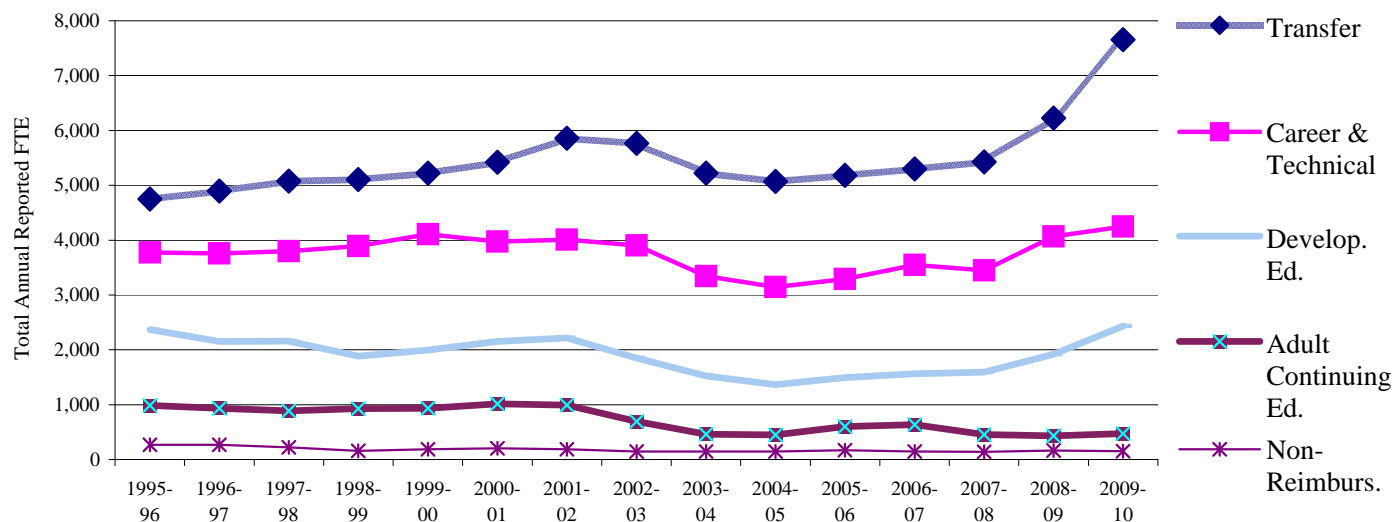


# Key Benchmarks -- LANE Community College

## Student FTE by Reimbursement Category



Category	2003-04	2004-05	2005-06	2006-07	2007-08	2008-09	2009-10
Transfer	5,225	5,068	5,181	5,296	5,429	6,226	7,654
Career & Technical	3,342	3,144	3,291	3,549	3,448	4,069	4,248
Developmental Ed.	1,525	1,366	1,496	1,565	1,593	1,922	2,434
Adult Continuing Ed.	462	451	598	635	456	433	470
Non-Reimbursable	147	145	172	144	139	166	152
<b>Total Reported FTE</b>	<b>10,700</b>	<b>10,174</b>	<b>10,738</b>	<b>11,189</b>	<b>11,065</b>	<b>12,817</b>	<b>14,958</b>

**Analysis and Action:** In 2009-10, Lane's total Reported FTE increased 16.7% compared to 2008-09. Total FTE across all Oregon community colleges increased 15.8% in 2008-09.

FTE change by types of courses during 2009-10 ==> Transfer increased 22.9%; Career & Technical increased 4.4%; Developmental Ed. increased 26.6%; Adult Continuing Ed. increased 8.5%; Non-reimbursable decreased 8.5%.

Focused enrollment management strategies and tools designed to improve student access to needed courses, retention, and success are being developed and implemented; these, along with a continuing sluggish economy, should contribute to FTE growth in 2010-11.

**Notes:** 1. *Developmental Ed.* courses include ESL, ABE, AHS, GED, and post-secondary remedial courses.

2. *Career & Technical* courses include courses in the reimbursement categories of Professional Technical Preparatory, Professional Technical Supplementary, and Apprenticeship.

3. The Self-Improvement category was changed to Adult Continuing Edn. (ACE) during the 2002 Special Legislative Session and classes that are not health, safety, or workforce-related are no longer eligible for state reimbursement funding.

4. 2.5% of Lane's '09-10 total reported FTE was non-reimbursable; these FTE are derived from: a) courses that meet state guidelines for this reimbursement category and b) from out-of-state students -- even when they are enrolled in reimbursable courses.

5. "Hold Harmless" FTE are not included in data reported above.

**Data Sources:** OCCURS Annual Enrollment Reports. 2009-10 data derived before final FTE Audit decisions by CCWD.

Institutional Research, Assessment & Planning (September 29, 2010)

c:\irap\benchmark\2010-11\students\reimbcats.xls