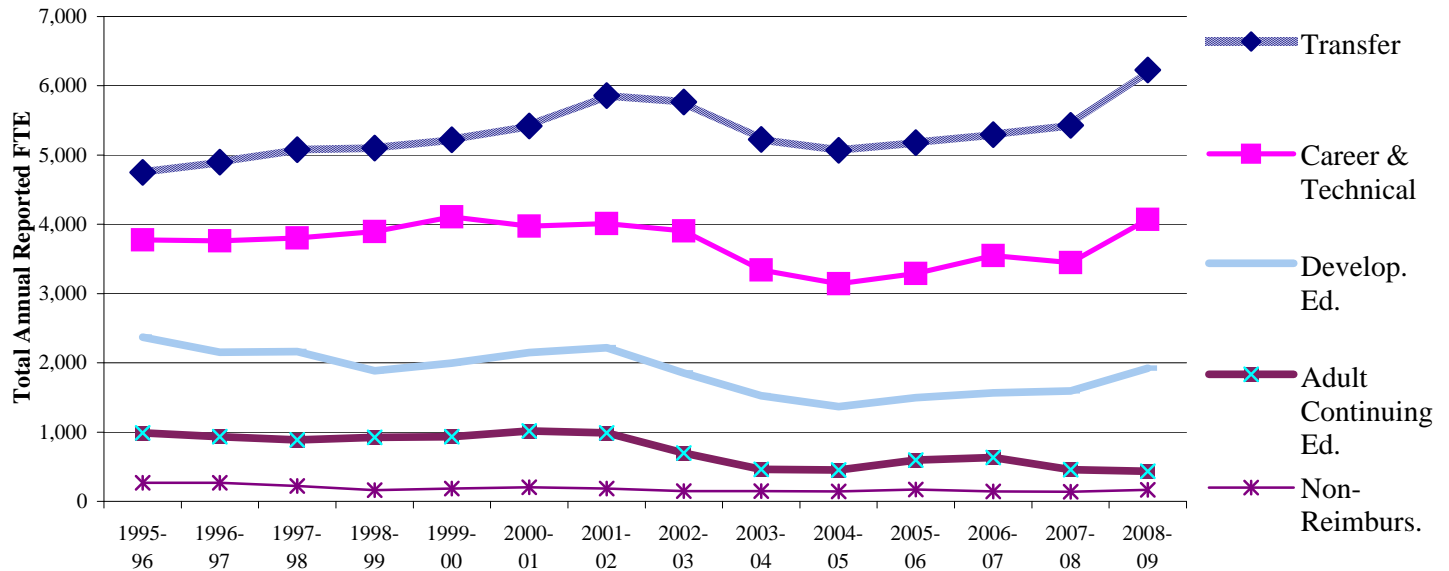


# Key Benchmarks -- LANE Community College

## Student FTE by Reimbursement Category



Category	2002-03	2003-04	2004-05	2005-06	2006-07	2007-08	2008-09
Transfer	5,768	5,225	5,068	5,181	5,296	5,429	6,226
Career & Technical	3,902	3,342	3,144	3,291	3,549	3,448	4,069
Developmental Ed.	1,851	1,525	1,366	1,496	1,565	1,593	1,922
Adult Continuing Ed.	696	462	451	598	635	456	433
Non-Reimbursable	146	147	145	172	144	139	166
<b>Total Reported FTE</b>	<b>12,364</b>	<b>10,700</b>	<b>10,174</b>	<b>10,738</b>	<b>11,189</b>	<b>11,065</b>	<b>12,817</b>

**Analysis and Action:** In 2008-09, Lane's total Reported FTE increased 15.8% compared to 2007-08. Total FTE across all Oregon community colleges increased 11.2% in 2008-09.

FTE change by types of courses during 2008-09 ==> Transfer increased 14.7%; Career & Technical increased 18.0%; Developmental Ed. increased 20.6%; Adult Continuing Ed. decreased 5.0%; Non-reimbursable increased 19.2%.

Focused enrollment management strategies and tools designed to improve student access to needed courses, retention, and success are being developed and implemented; these, along with a continuing sluggish economy, should contribute to FTE growth for 2009-10.

**Notes:** 1. *Developmental Ed.* courses include ESL, ABE, AHS, GED, and post-secondary remedial courses.

2. *Career & Technical* courses include courses in the reimbursement categories of Professional Technical Preparatory, Professional Technical Supplementary, and Apprenticeship.

3. The Self-Improvement category was changed to Adult Continuing Edn. (ACE) during the 2002 Special Legislative Session and classes that are not health, safety, or workforce-related are no longer eligible for state reimbursement funding.

4. 1.4% of Lane's '08-09 FTE was *Non-Reimbursable*; these FTE are derived from a) courses that meet state guidelines for this reimbursement category and b) from out-of-state students -- even when they are enrolled in reimbursable courses.

5. "Hold Harmless" FTE are not included in data reported above.

**Data Sources:** OCCURS Annual Enrollment Reports.

Institutional Research, Assessment & Planning (October 23, 2009)

c:\irap\benchmark\2009-10\students\reimbcat.xls