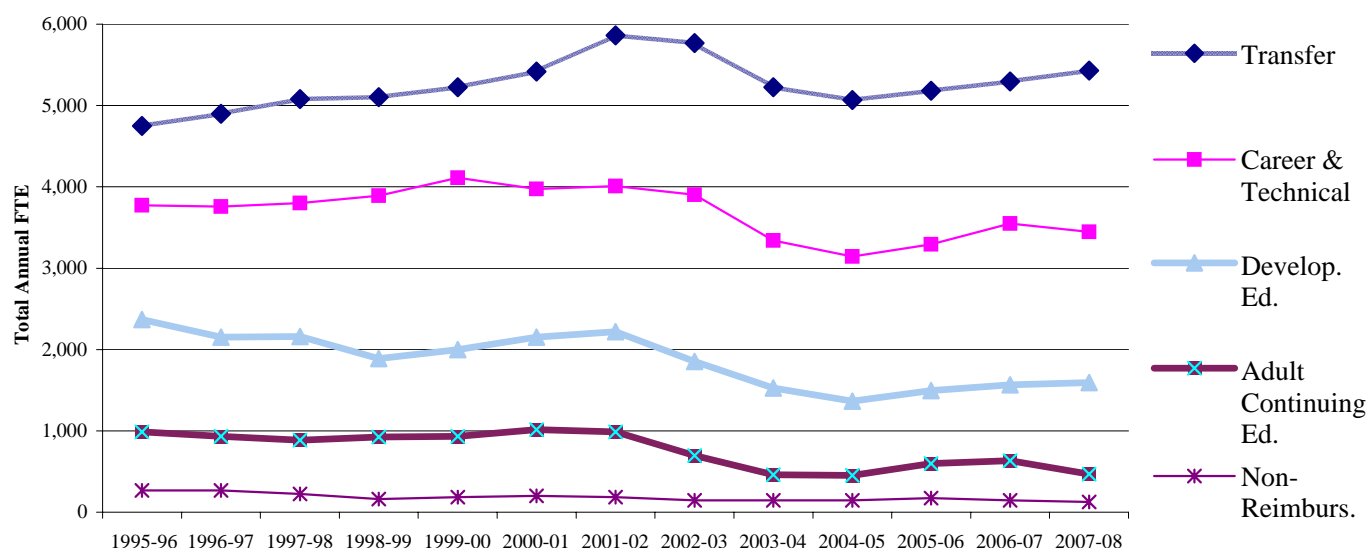


Key Benchmarks -- LANE Community College

Student FTE by Reimbursement Category



	2000-01	2001-02	2002-03	2003-04	2004-05	2005-06	2006-07	2007-08
Transfer =	5,419	5,861	5,768	5,225	5,068	5,181	5,296	5,429
Career & Technical =	3,974	4,009	3,902	3,342	3,144	3,291	3,549	3,448
Developmental Ed. =	2,150	2,220	1,851	1,525	1,366	1,496	1,565	1,593
Adult Continuing Ed. =	1,016	989	696	462	451	598	635	469
Non-Reimbursable =	201	186	146	147	145	172	144	127
Total Reported FTE	12,760	13,265	12,364	10,700	10,174	10,738	11,189	11,065

Analysis and Action: In 2007-08, Lane's total Reported FTE decreased 1.1% compared to 2006-07. Total FTE for '07-08 across all Oregon community colleges has not yet been reported by ODCCWD.

FTE change by types of courses during 2007-08 ==> Transfer increased 2.5%; Career & Technical decreased 2.8%; Developmental Ed. increased 1.8%; Adult Continuing Ed. decreased 26.1%; Non-reimbursable decreased 12.2%.

Focused enrollment management strategies and tools designed to improve student access to needed courses, retention, and success are being developed and implemented; these should contribute to FTE growth for 2008-09.

Notes: 1. *Developmental Ed.* courses include ESL, ABE, AHS, GED, and post-secondary remedial courses.

2. *Career & Technical* courses include courses in the reimbursement categories of Professional Technical Preparatory, Professional Technical Supplementary, and Apprenticeship.

3. The Self-Improvement category was changed to Adult Continuing Edn. during the 2002 Special Legislative Session and classes that are not health-, safety-, or workforce-related are no longer eligible for state reimbursement funding.

4. 1.1% of Lane's '07-08 FTE was *Non-Reimbursable*; these FTE are derived from a) courses that meet state guidelines for this reimbursement category and b) from out-of-state students enrolled in courses that meet guidelines for reimbursable categories of courses.

Data Sources: OCCURS Annual Enrollment Reports.