

The Strategic Plan

Vision

Transforming lives through learning

Mission

Lane is a learning-centered community college that provides affordable, quality, lifelong educational opportunities that include:

- Professional technical and lower division college transfer programs
- Employee skill upgrading, business development and career enhancement
- Foundational academic, language and life skills development
- Lifelong personal development and enrichment, and
- Cultural and community services

Core Values

Learning

- Work together to create a learning-centered environment
- Recognize and respect the unique needs and potential of each learner
- Foster a culture of achievement in a caring community

Diversity

- Welcome, value and promote diversity among staff, students and our community
- Cultivate a respectful, inclusive and accessible working and learning environment
- Work effectively in different cultural contexts to serve the educational and linguistic needs of a diverse community
- Develop capacity to understand issues of difference, power and privilege

Innovation

- Support creativity, experimentation, and institutional transformation
- Respond to environmental, technological and demographic changes
- Anticipate and respond to internal and external challenges in a timely manner
- Act courageously, deliberately and systematically in relation to change

Collaboration and Partnership

- Promote meaningful participation in shared governance
- Encourage and expand partnerships with organizations and groups in our community

Integrity

- Foster an environment of respect, fairness, honesty and openness
- Promote responsible stewardship of resources and public trust

Accessibility

- Strategically grow learning opportunities
- Minimize financial, geographical, environmental, social, linguistic and cultural barriers to learning

Strategic Directions

Transforming Students' Lives

- Foster the personal, professional, and intellectual growth of learners by providing exemplary and innovative teaching and learning experiences and student support services.
- Commit to a culture of assessment of programs, services and learning.
- Position Lane as a vital community partner by empowering a learning workforce in a changing economy.

Transforming the Learning Environment

- Create a diverse and inclusive learning college: develop institutional capacity to respond effectively and respectfully to students, staff, and community members of all cultures, languages, classes, races, genders, ethnic backgrounds, religions, sexual orientations, and abilities.
- Create, enhance, and maintain inviting and welcoming facilities that are safe, accessible, functional, well-equipped, aesthetically appealing and environmentally sound.

Transforming the College Organization

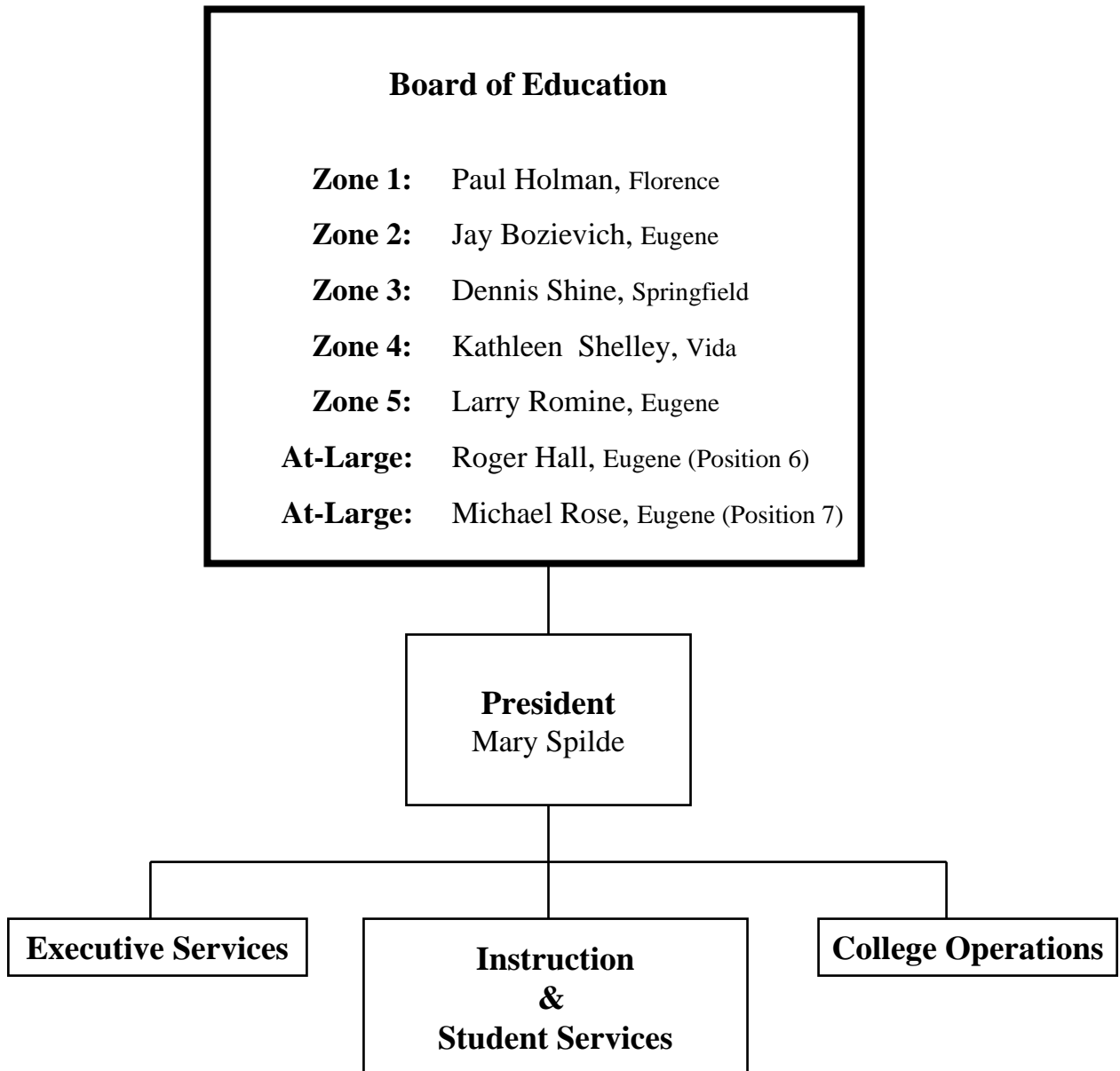
- Achieve and sustain fiscal stability.
- Build organizational capacity and systems to support student success and effective operations.
- Promote professional growth and provide increased development opportunities for staff both within and outside the College.

Adopted by the Board of Education in December 2003.

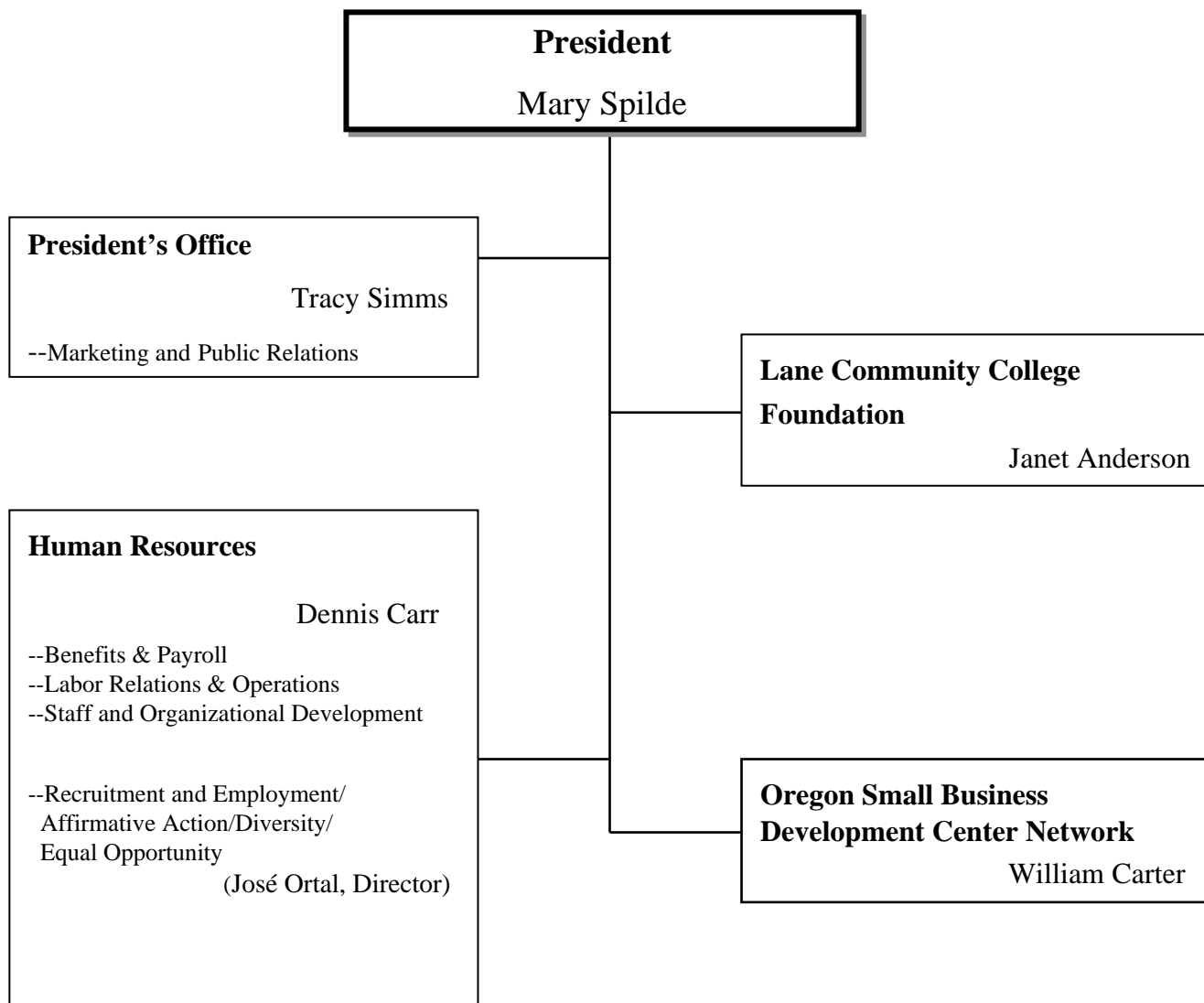
For more information about Lane's Strategic Plan, please visit the website at:
<http://www.lanecc.edu/research/strplan2003.htm>

Lane Community College Organization Chart

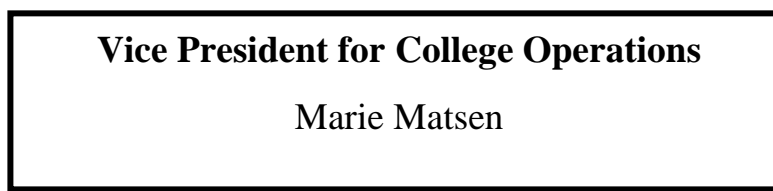
(as of May 2005)



Executive Services



College Operations



Bookstore
Shelley Dutton

Budget Office
Kay Malmberg

College Finance
Stan Barker
--Accounting
--Funded Projects
--Invest/Disburse
--Purchasing Services

Office of Internal Controls
Bill Kyker

Facilities Management & Planning
Mike Ruiz
--Grounds
--Facilities Planning
--Housekeeping/General Services
--Plant Maintenance
--Motorpool

Health & Safety
Sandy Ing-Wiese, Interim
--Public Safety
Duke Vandervort
--Health Clinic

KLCC-FM
Steve Barton

Sustainability
Jennifer Hayward
--Energy Analysis
--Surplus Property/Recycling

Associate Vice President for Information Technology
Stephen Pruch

Technology Infrastructure Services
--Programming
--Network and Server Administration
--Telecommunications

Technology Support Services
Todd Lutz
--Web Services
--Computer Labs
--Audiovisual Services
--Electronic Services
--Help Desk

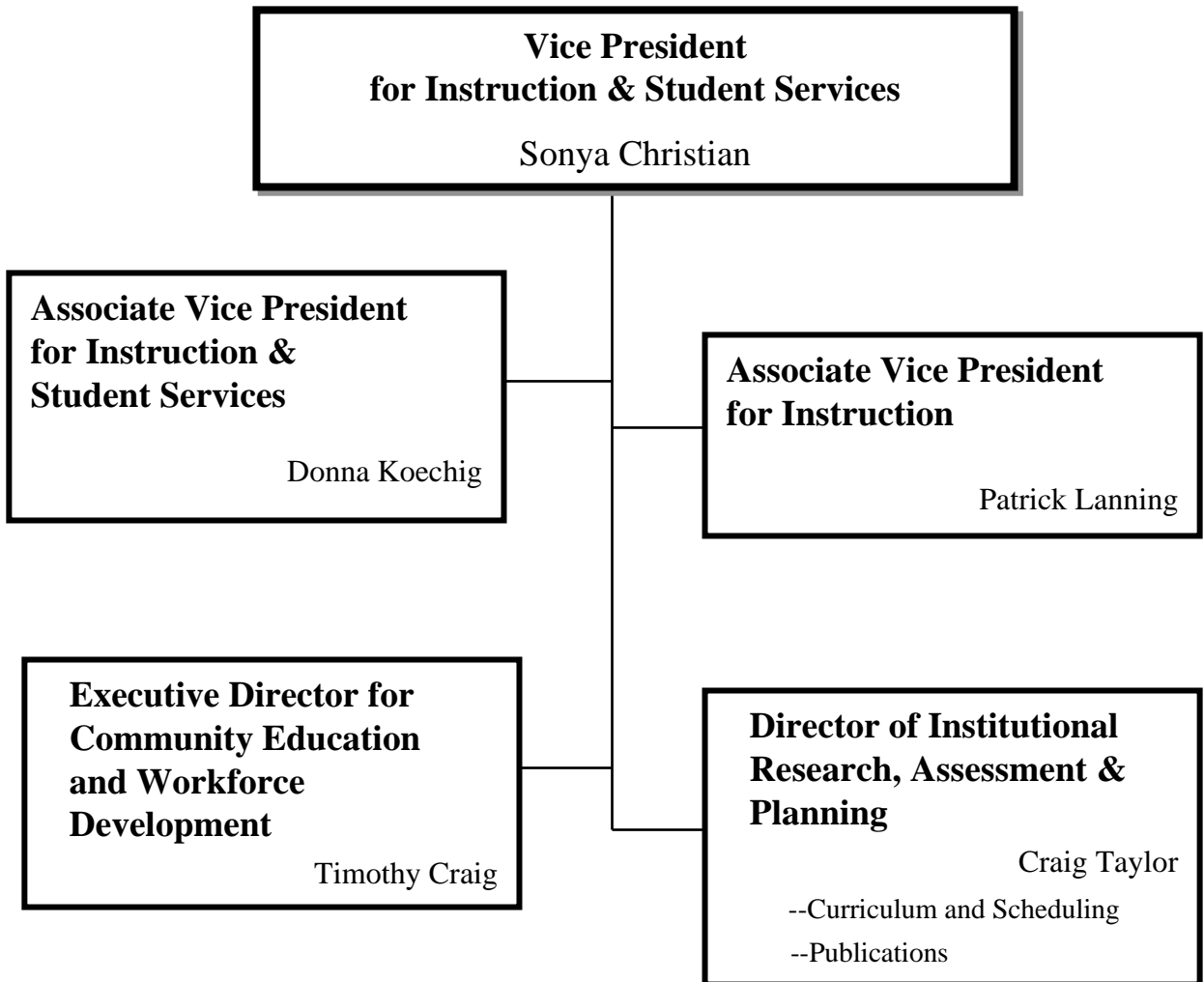
Archives & Records Management

Distance Learning

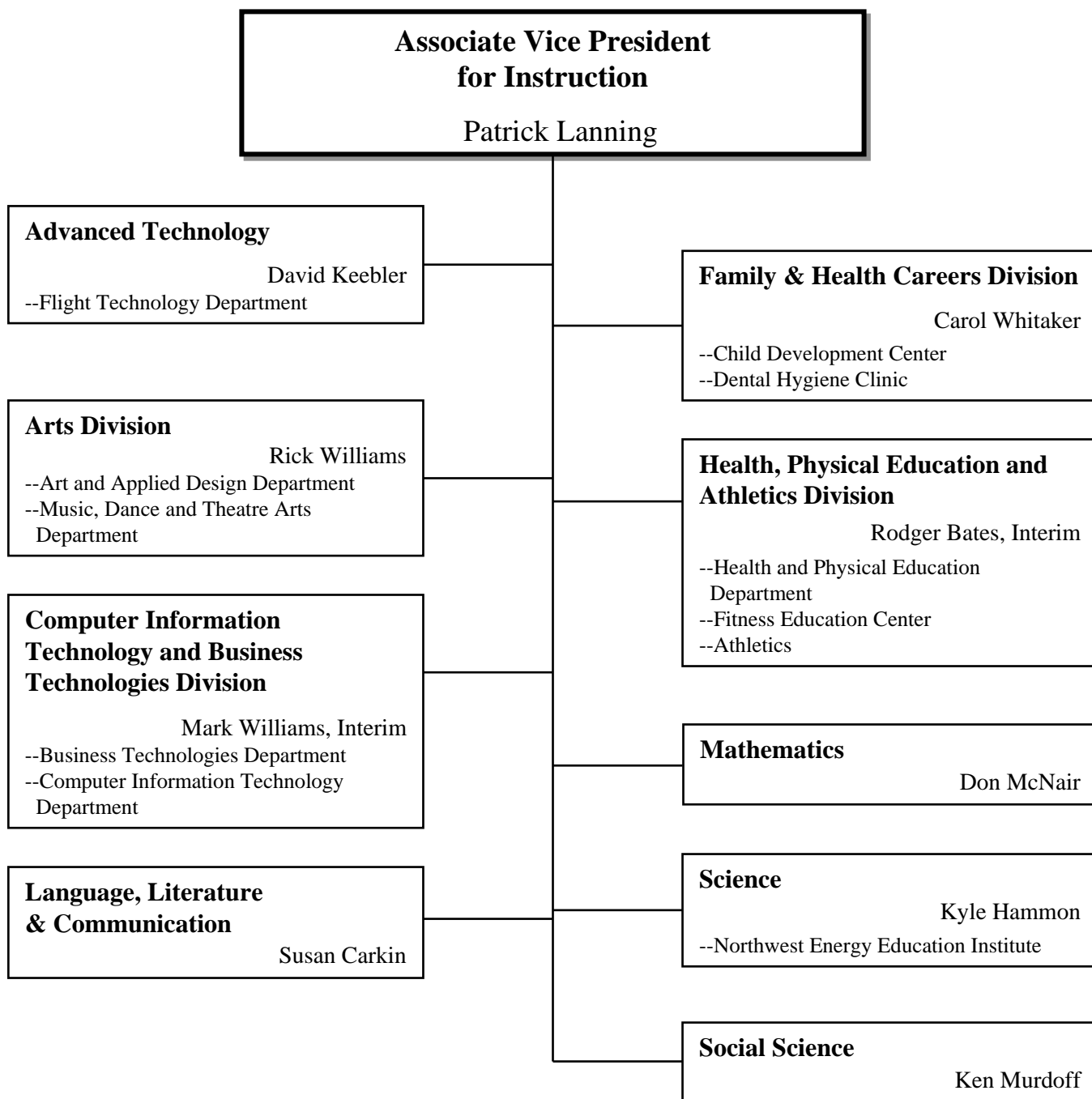
Specialized Employment Services
Rick Venturi
--Laundry

Printing/Graphics & Mail Services
Gary Anderson
--Warehouse

Instruction & Student Services



Instruction & Student Services



Instruction & Student Services

Associate Vice President for Instruction & Student Services

Donna Koechig

Center for Learning Advancement

Cathy Lindsley

- Academic Learning Skills
- English as a Second Language/
International ESL
- Tutoring Services

Dawn DeWolf

- Adult Basic & Secondary Education
- Adult Skills Development
- Adult Basic Skills Development
- General Education Development
- Literacy

Cooperative Education

Andrea Newton

- Apprenticeship
- College Now

Counseling Development

Dan Timberlake
(Jerry de Leon)

- Academic Advising
- Career and Employment Services
- Counseling
- Human Development Department
 - Community Center for Family
Counseling
- Substance Abuse Prevention
- Testing Services
(Criss Gilbert, Director)
- TRIO Learning Center
(Mary Parthemer, Director)

Disability Services

Nancy Hart

Enrollment Services

Helen Garrett

- High School /Community Relations
- International Admissions
- Accounts Receivable
- Students First! Center
- Student Records
- Veterans

Library

Nadine Williams

Student Financial Services

Bert Logan

- Financial Aid
- Sponsored Accounts and Scholarships
- Student Accounts

Student Life & Leadership Development

Barbara Delansky

- ASLCC
- ASLCC Child Care Co-op
- Lane Family Connections
- Multicultural Center
 - International Student Program
 - Native American Student Program
 - Rites of Passage Program
- Student Activities, Clubs and
Organizations

The Torch

Dorothy Wearne

Women's Program

Kate Barry

- Access
- Transitions to Success
- Women's Center

Instruction & Student Services

Executive Director for Community Education and Workforce Development

Timothy Craig

Business Development Center and Contract Training

James Lindly
(Sara Siegler, Contract Training
Manager)

Conference & Culinary Services

Peg Allison

--Center for Meeting and Learning
--Culinary Arts & Hospitality
Management
--Campus Foodservices
(Vacant, Executive Chef)

Continuing Education & Community Outreach

Jeffrey Davis

LCC at Cottage Grove and Community Learning Centers

Don Strahan

--McKenzie CLC
--Oakridge CLC
--Thurston CLC

LCC at Florence and Community Learning Centers

Bob Purscelley

--Churchill CLC
--Elmira CLC
--Junction City CLC
--Willamette CLC

Workforce Development

James Lindly, Interim

--The Workforce Network
--Job Opportunity and Basic Skills
(JOBS) Program
--Employment Retention Assistance
(ERA) Program

Council Structure

Governance Structure: The Governance Structure primarily deals with policy issues and issues that have campus-wide significance and impact. Any committee, task force, or council that ultimately makes recommendations to College Council is part of the Governance Structure.

Academic Council: The Academic Council is appointed by the President to advise the President about rules and policies concerning the maintenance of high academic standards. The council acts on student petitions covering extension of deadlines, program waivers, and graduation requirements.

College Council: The mission is to formulate and recommend policy to the President. Membership includes college president, vice presidents, assistant to the president, representatives from faculty, classified, student services, instructional services, non-instructional services, management steering committee, Management Council, LCCEA, LCCEF, and four representatives from ASLCC.

Classified Council: Classified Council provides a means for classified staff to effectively influence college policy and decision making. The Council seeks to build positive relationships among classified staff, and between classified staff and the rest of the LCC Community. The Council seeks to join with other groups in the LCC Community, working together to promote educational excellence and the welfare of the college community.

Faculty Council: Faculty Council contributes to the quality of education at Lane by providing an effective forum for faculty participation in governance.

Management Council: This group is a representative forum that gathers, clarifies, synthesizes and presents the thinking of members of the management employees' group on issues of importance to the college. They serve as a resource to the executive leadership of the college and represent managers as part of the shared governance system at Lane, including representation on College Council.

2004-05 Statistical Summary

Unduplicated Headcount Students	29,868
Total Annual FTE	10,173.7

Degrees and Certificates Offered

Technical Degrees	35
Certificate Programs	27

Degrees and Certificates Awarded:

Total Degrees and Certificates	954
Lower Division Transfer Associate Degrees	419
Professional Technical Degrees and Certificates	535

Student Characteristics:

Female	16,577
Male	12,981
Credit	15,505
Non-Credit	14,363
Average Age (all students)	35.4 yrs
Students Receiving Financial Aid	5,941
Total Financial Aid Disbursed	\$34,881,925

College Staff [Fall 2005]:

Total Staff	1,118
Contracted Faculty	269
Part-Time Faculty	332
Contracted Classified	449
Managers & Management Support	68
Males	444
Females	674

College District Population & Enrollment:

District Population (US Census Bureau)	333,350
Enrollment of In-District Students	27,553

Financial Information:

Total General Fund Revenues and Transfers by Source	\$63,130,803
Total General Fund Expenditures	\$63,184,852

40 Years at a Glance

Years	Total Staff *	Full-time Staff *	General Fund Expenditures	Student Headcount	Total Annual FTE
2004-05	1,118	786	\$69,282,616	29,868	10,173.7
2003-04	1,104	779	\$59,389,363	29,743	10,699.9
2002-03	1,005	744	\$63,184,852	34,394	12,364.3
2001-02	1,163	828	\$66,472,484	40,099	13,265.1
2000-01	1,213	827	\$62,857,862	43,223	12,760.1
1999-00	1,107	790	\$61,864,194	41,766	12,449.4
1998-99	1,075	774	\$57,080,494	40,113	11,968.3
1997-98	1,053	774	\$54,768,949	37,954	12,148.7
1996-97	1,062	795	\$53,793,847	37,841	12,007.3
1995-96**	1,034	776	\$51,101,264	38,441	12,141.8
1994-95	1,009	763	\$48,763,856	37,360	9,308.2
1993-94	na	756	\$47,113,514	36,256	9,536.9
1992-93	1,022	762	\$44,245,093	35,570	9,842.9
1991-92	940	739	\$43,340,643	33,778	9,097.8
1990-91		686	\$36,489,043	33,212	8,857.6
1989-90	932	693	\$34,181,402	32,593	8,330.0
1984-85		744	\$26,520,823	32,947	8,198.8
1979-80		508	\$18,595,492		9,501.8
1974-75			\$9,774,882		7,133.1
1969-70			\$3,721,879		4,766.8
1964-65	138				1,435.0

* Fall term 2005 data. **Total staff** includes: contracted faculty, part-time faculty, contracted classified, managers, and management support. **Full-time staff includes** contracted faculty, contracted classified, managers, and management support.

** Oregon community colleges implemented a new FTE formula in 1995-96. The new formula FTE figures are 28-30% higher than FTE derived from the old formula. Consequently, comparison across the 1995-96 transition year of FTE enrollment is problematic.

2004-05 Lane Community College History Highlights

2004

- Lane's [Culinary Arts and Food Service Management](#) degree program receives a five-year accreditation from the Accrediting Commission of the American Culinary Federation. (July)
- [Sonya Christian](#) is named vice-president for [instruction and student services](#). She had been associate vice president for instruction. (September)
- [English as a Second Language](#) daytime program moves to main campus from downtown, bringing about 300 new students to main campus. (September)
- Dr. [Dale Parnell](#) is named President Emeritus of Lane Community College by unanimous vote of Lane's Board of Education. Parnell is recognized for his distinguished service as Lane's founding president and a lifetime of influential leadership in the community college movement nationwide. (October)
- Lane observes its [40th anniversary](#) on October 19 with a special community open house on the main campus. President Mary Spilde addresses the 150 guests and welcomes guest speaker, Dale Parnell, Lane's founding president. At the Harvest Dinner on October 28, the [Foundation](#) honors four outstanding alumni: Dan Luoma, Kathryn Harrison, Pete Gribskov, and Marciann Guston. (October)
- Voter registration reaches historic milestones at Lane and in Oregon. Secretary of State Bill Bradbury visits main campus to register Oregon's two-millionth voter, hosted by the Student Vote Coalition at Lane. The coalition registers a record 2,584 voters at Lane in the first 12 days of the term. (October)
- The new west entrance garden opens in early October, replacing the old fountain. The garden features a brick labyrinth, gravel maze pathway, colorful fall plantings, and a small fountain in memory of Carol Lynn Morse, a long-time counselor who died earlier this year. (October)
- Lane's partners with K-12 through the Regional Technical Education Consortium (RTEC). Lane works with the Crow School District to offer a fundamentals of technology course that gives students both high school and college credit and helps make up for the loss of wood and machine shop classes at the high school due to funding cuts. (November)
- The [14th Annual Native American Powwow](#) marks the retirement of event founder Frank Merrill and ushers in successor James Florendo. (December)
- [KLCC-FM](#) added frequency KMPQ 88.1 to improve service to Roseburg listeners. (December)

2005

- The [Flight Technology](#) program earns a safety award from the Federal Aviation Administration for 250,000 hours of safe flight instruction without injury. (January 2005)
- Ten-year reaffirmation of accreditation is awarded to the college by the Northwest Commission on Colleges and Universities. (January 2005)
- The [Black Student Union](#) re-enacts Tent City at Alton Baker Park in observance of Black History Month. African American migrants to Eugene in the 1940s could not legally reside or own property within the city limits and so lived in tents, makeshift shacks, and other sub-standard housing on the banks of the Willamette River, then an unincorporated area. (February)
- Associate of Science Oregon [Transfer Degree](#)-Business is approved to facilitate transfer to Oregon universities. (March 2005)
- Associate Degree [Nursing](#) receives reaffirmation of accreditation for eight years from the Oregon State Board of Nursing. (March 2005)
- A [16th century manuscript](#) is re-discovered in the main campus library and transferred to the Archives. The one leaf (two-page) manuscript is from a 16th century choir book containing portions of a Catholic Mass. It has five lines of Latin text and square music notations on red 5-line staves. (April 2005)
- Patrick Lanning is named associate vice president for instruction. He previously chaired health, physical education and athletics; music, dance and theatre arts; and art and applied design. (April)

The college Archives maintains a web site at <http://www.lanecc.edu/archives/Historyhighlights.html>. It contains a brief narrative history of the college, a chronological history listing significant events, a list of college presidents and Board members, several exhibits and resources for further information.