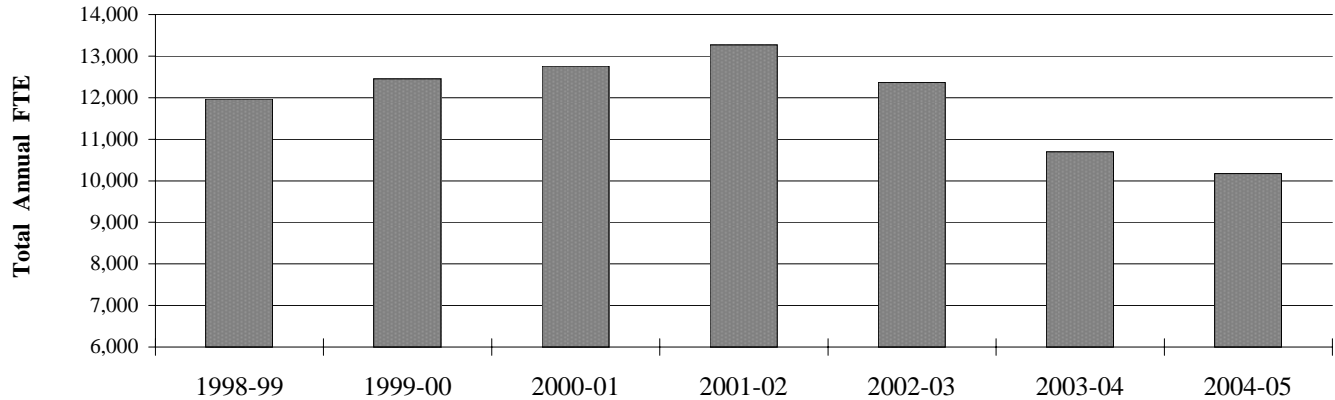


Total Annual FTE

(includes reimbursable and non-reimbursable FTE)

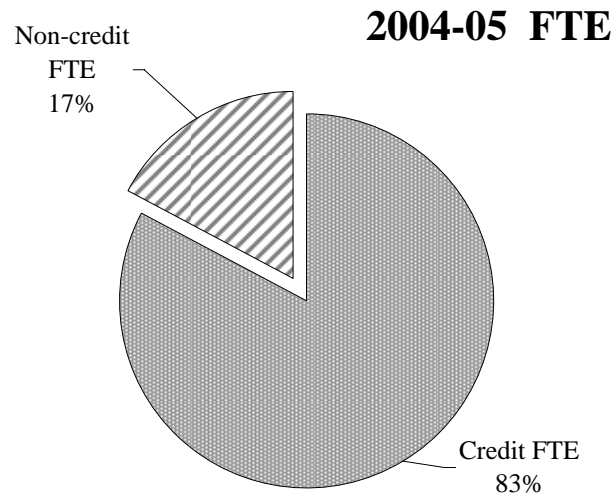


Notes: An adjustment was made to the method used to calculate FTE for most credit classes for winter and spring terms 1999 which led to a slight decline in FTE for 1998-99.

Total annual FTE for Lane decreased 4.9% in 2004-05. This includes both reimbursable and non-reimbursable FTE.

Credit FTE are derived from the following reimbursement categories: lower division collegiate, professional technical preparatory, and post-secondary remedial.

Note: Beginning fall term 2003, courses for fall term are offered over 11 weeks rather than 12 weeks. This results in fewer contact hours per course for the term and, therefore, fewer FTE compared to fall terms prior to 2003. The state continues to reimburse colleges on a 12-week basis for fall term under a "hold harmless" agreement.



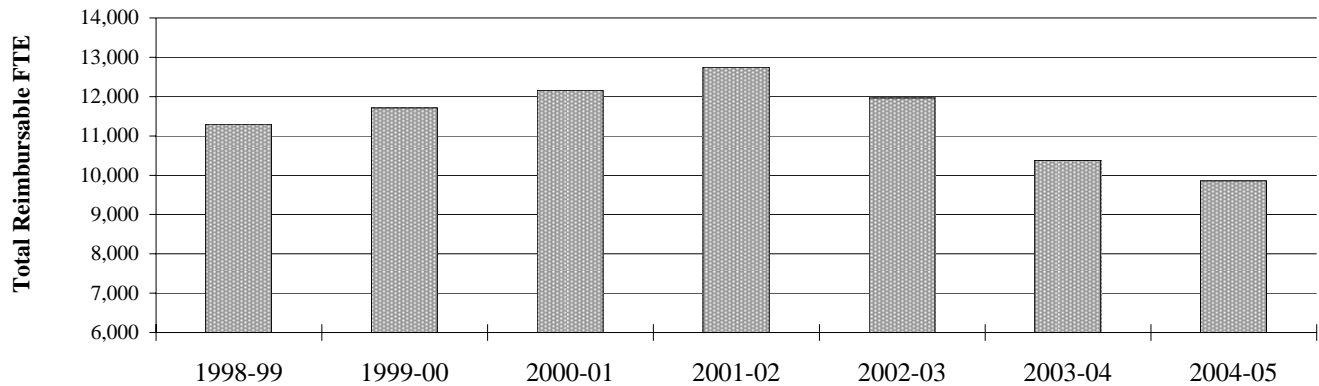
	1998-99	1999-00	2000-01	2001-02	2002-03	2003-04	2004-05
Total FTE	11,968.3	12,449.4	12,760.1	13,265.1	12,364.3	10,699.9	10,173.7
% of Total Annual FTE	100%	100%	100%	100%	100%	100%	100%
Yearly Change	na	4.0%	2.5%	4.0%	-6.8%	-13.5%	-4.9%
Cumulative Change (based on '98-99)	na	4.0%	6.6%	10.8%	3.3%	-10.6%	-15.0%

Source: IRZ2202 and OCCURS Course file and Enrollment Reports.

Institutional Research, Assessment & Planning

r:\profile\2004-05\fte\totl_fte.xls

Total Reimbursable FTE

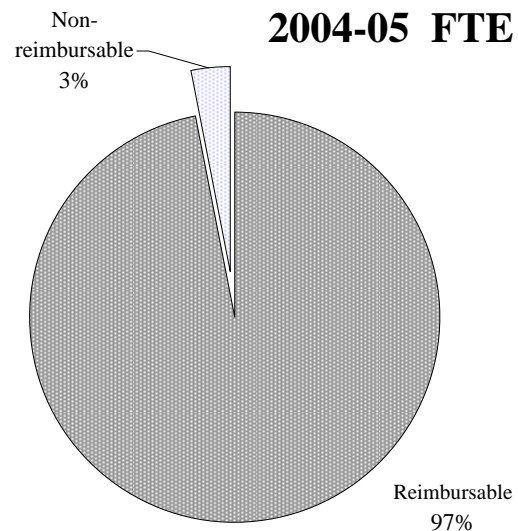


Notes: An adjustment was made to the method used to calculate FTE for most credit classes for winter and spring terms 1999 which led to a slight decline in FTE for 1998-99.

Total reimbursable FTE decreased 5.0% during 2004-05. Reimbursable FTE are derived from most courses taught and students enrolled at Lane. Courses yielding non-reimbursable FTE (i.e., these FTE are not considered in the state funding formula) are described by state instructional guidelines and can be generally categorized as certain types of hobby or recreation courses. Out-of-state students also yield non-reimbursable FTE.

Reimbursable FTE are used in the state funding formula.

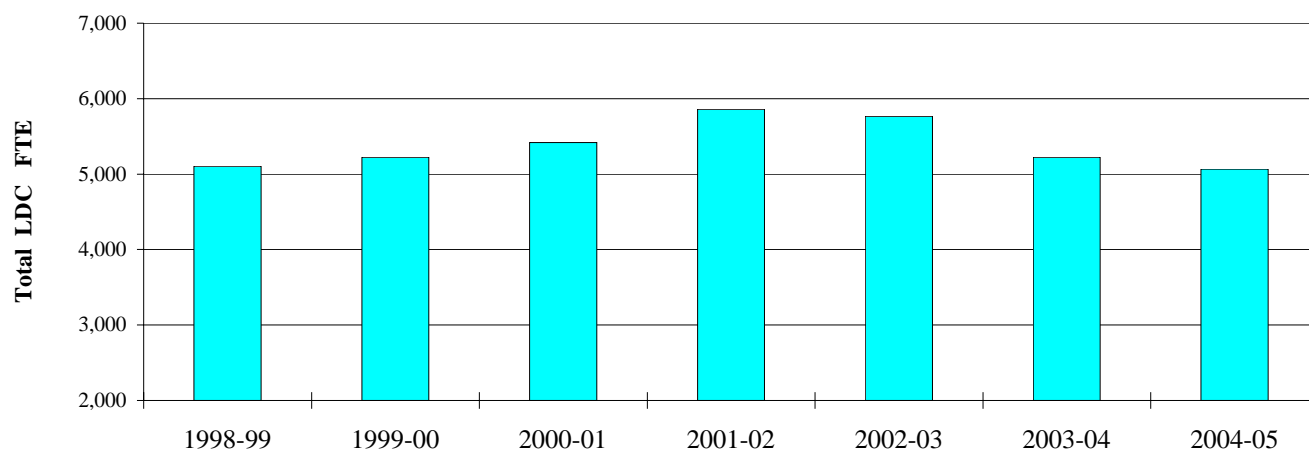
Note: Beginning fall term 2003, courses for fall term are offered over 11 weeks rather than 12 weeks. This results in fewer contact hours per course for the term and, therefore, fewer FTE compared to fall terms prior to 2003. The state continues to reimburse colleges on a 12-week basis for fall term under a "hold harmless" agreement.



	1998-99	1999-00	2000-01	2001-02	2002-03	2003-04	2004-05
Total Reimbursable FTE	11,299.4	11,709.7	12,157.1	12,746.9	11,962.5	10,376.8	9,856.7
% of Total Annual FTE	94.4%	94.1%	95.3%	96.1%	96.8%	97.0%	96.9%
Yearly Change	na	3.6%	3.8%	4.9%	-6.2%	-13.3%	-5.0%
Cumulative Change (based on '98-99)	na	3.6%	7.6%	12.8%	5.9%	-8.2%	-12.8%

Source: IRZ2202 and OCCURS Course file and Enrollment Reports; "The Oregon Community College Handbook."

Lower Division Collegiate (Transfer) FTE



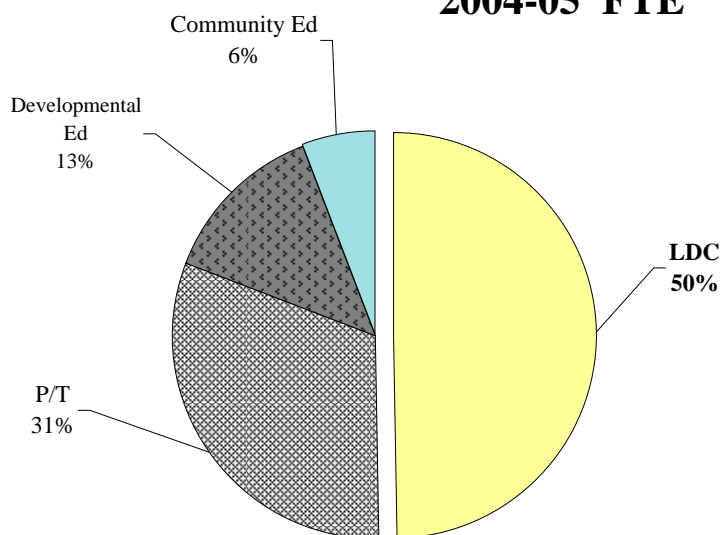
FTE in this reimbursement category are generated by students enrolled in courses in the Lower Division Collegiate (LDC) category. These courses are transferable to a four-year institution and apply toward a Bachelor's degree.

LDC FTE for Lane decreased 3.0% in 2004-05.

An adjustment was made to the method used to calculate FTE for most credit classes for winter and spring terms 1999 which led to a slight decline in FTE for 1998-99.

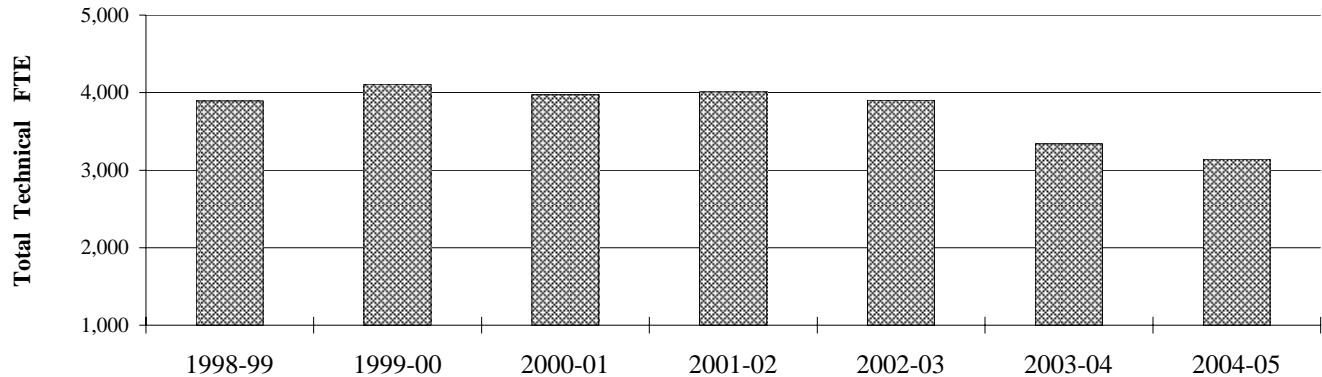
Note: Beginning fall term 2003, courses for fall term are offered over 11 weeks rather than 12 weeks. This resulted in fewer contact hours per course for the term and, therefore, fewer FTE compared to fall terms prior to 2003. The state continues to reimburse colleges on a 12-week basis for fall term under a "hold harmless" agreement.

2004-05 FTE



	1998-99	1999-00	2000-01	2001-02	2002-03	2003-04	2004-05
Total LDC FTE	5,103.3	5,223.1	5,418.6	5,860.9	5,767.9	5,224.7	5,068.0
% of Total Annual FTE	42.6%	42.0%	42.5%	44.2%	46.6%	48.8%	49.8%
Yearly Change	na	2.3%	3.7%	8.2%	-1.6%	-9.4%	-3.0%
Cumulative Change (based on '98-99)	na	2.3%	6.2%	14.8%	13.0%	2.4%	-0.7%

Professional and Technical FTE

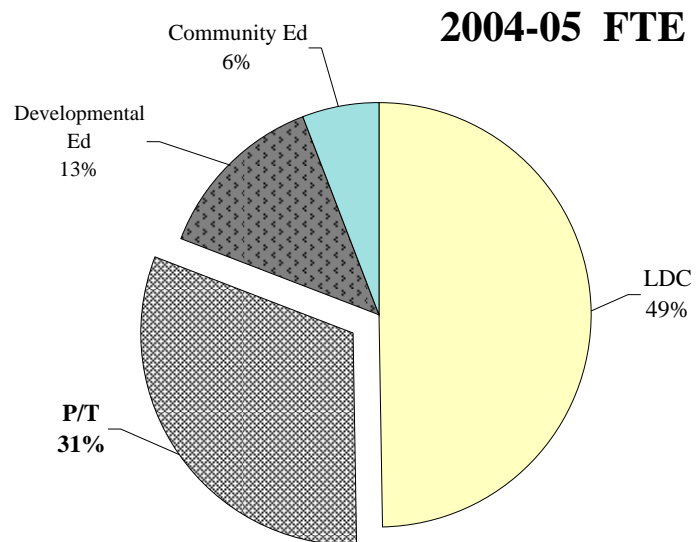


Professional and Technical courses include the reimbursement categories of Preparatory, Supplementary, and Apprenticeship. FTE in this broad group decreased 5.9% in 2004-05.

Tech Prep courses enable high school students to begin to train for a professional technical career while still in high school and to earn college credits while doing so.

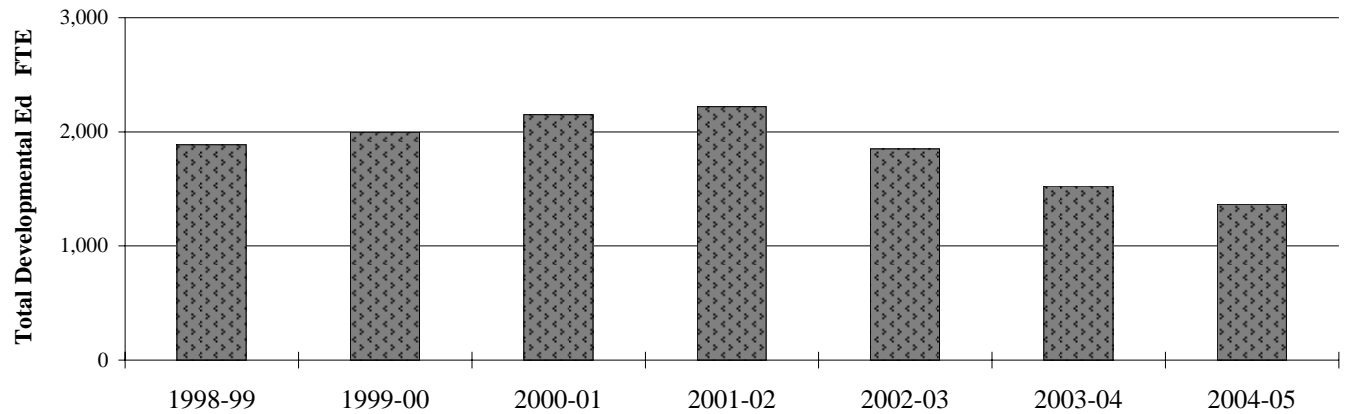
An adjustment was made to the method used to calculate FTE for most credit classes for winter and spring terms 1999 which led to a slight decline in '98-99 FTE.

Note: Beginning fall term 2003, courses for fall term are offered over 11 weeks rather than 12 weeks. This resulted in fewer contact hours per course for the term and, therefore, fewer FTE compared to fall terms prior to 2003. The state continues to reimburse colleges on a 12-week basis for fall term under a "hold harmless" agreement.



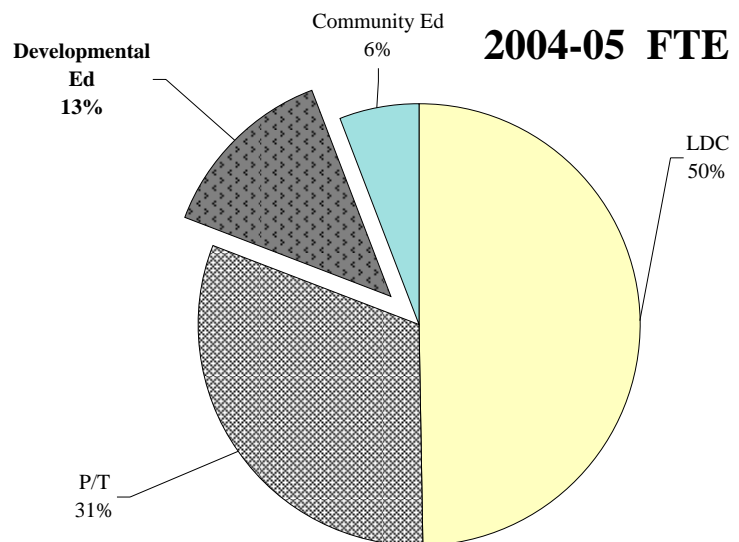
	1998-99	1999-00	2000-01	2001-02	2002-03	2003-04	2004-05
Total Prof. & Tech. FTE	3,893.1	4,109.8	3,973.5	4,009.0	3,902.4	3,341.7	3,143.7
% of Total Annual FTE	32.5%	33.0%	31.1%	30.2%	31.6%	31.2%	30.9%
Yearly Change	na	5.6%	-3.3%	0.9%	-2.7%	-14.4%	-5.9%
Cumulative Change (based on '98-99)	na	5.6%	2.1%	3.0%	0.2%	-14.2%	-19.2%
Preparatory	2,716.9	2,781.8	2,759.2	2,962.4	2,993.7	2,689.4	2,587.8
Supplementary	914.3	911.6	927.9	790.6	695.5	453.9	384.6
Apprenticeship	261.9	416.4	286.4	256.1	213.2	198.5	171.3

Developmental Education FTE



The broad group of Developmental Education includes courses from the following reimbursement categories: English as a Second Language (ESL), Adult Basic Education (ABE), General Education Development (GED), Adult High School (AHS), and Post-Secondary Remedial (PSR).

Note: Beginning fall term 2003, courses for fall term are offered over 11 weeks rather than 12 weeks. This resulted in fewer contact hours per course for the term and, therefore, fewer FTE compared to fall terms prior to 2003. The state continues to reimburse colleges on a 12-week basis for fall term under a "hold harmless" agreement.

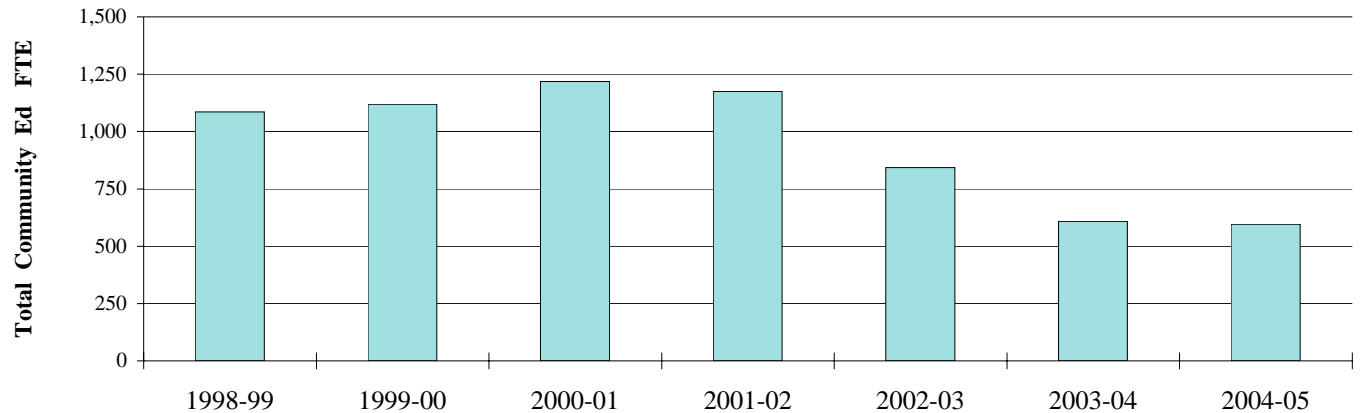


	1998-99	1999-00	2000-01	2001-02	2002-03	2003-04	2004-05
Total Developmental FTE	1,886.8	1,997.5	2,150.4	2,219.8	1,851.3	1,524.9	1,366.3
% of Total Annual FTE	15.8%	16.0%	16.9%	16.7%	15.0%	14.3%	13.4%
Yearly Change	na	5.9%	7.7%	3.2%	-16.6%	-17.6%	-10.4%
Cumulative Change (based on '98-99)	na	5.9%	14.0%	17.6%	-1.9%	-19.2%	-27.6%
ESL	237.8	308.3	272.1	298.9	308.0	258.0	218.3
ABE	402.6	365.7	540.7	508.6	295.4	259.9	290.7
GED	277.7	278.5	271.4	245.8	276.1	182.0	84.8
AHS	330.6	311.5	283.2	251.2	55.9	-	-
PSR	638.1	733.5	783.1	915.3	915.9	825.1	772.5

Source: IRZ2202; OCCURS Annual Enrollment Rpt.

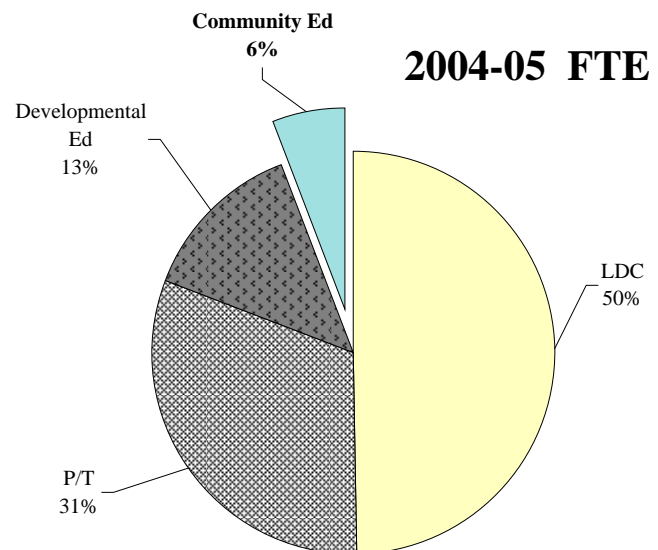
r:\profile\2004-05\fte\devel_ed.xls

Community Education FTE

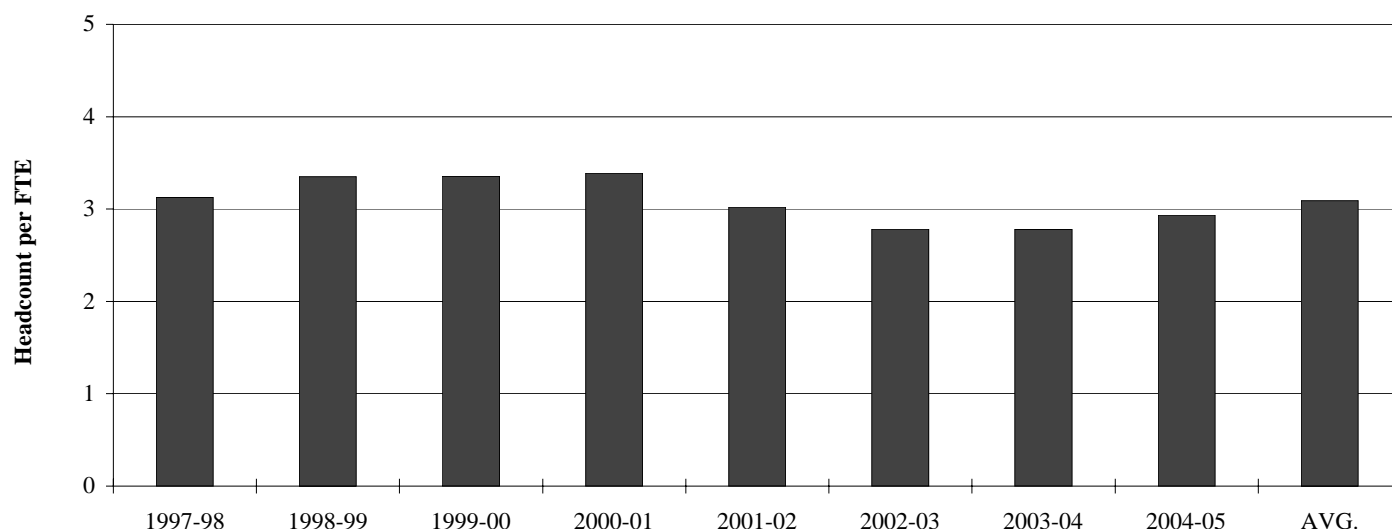


FTE in this group are derived from courses in the Self-Improvement/Adult Continuing Ed. and Non-reimbursable reimbursement categories (Note: The Self-Improvement category was changed to Adult Continuing Edn. in 2002-03 and classes other than workforce training and health related are no longer eligible for state reimbursement funding). Lane departments contributing to this group include the Business Development & Contract Training, Continuing Education & Educational Outreach, LCC at Cottage Grove and LCC at Florence. Note: Non-reimbursable FTE are derived from a particular category of courses and from out-of-state students enrolling in courses that would otherwise yield reimbursable FTE.

Note: Beginning fall term 2003, courses for fall term are offered over 11 weeks rather than 12 weeks. This resulted in fewer contact hours per course for the term and, therefore, fewer FTE compared to fall terms prior to 2003. The state continues to reimburse colleges on a 12-week basis for fall term under a "hold harmless" agreement.



	1998-99	1999-00	2000-01	2001-02	2002-03	2003-04	2004-05
Total Community Ed FTE	1,085.2	1,119.0	1,217.6	1,175.1	842.3	608.2	595.8
% of Total Annual FTE	9.1%	9.0%	9.5%	8.9%	6.8%	5.7%	5.9%
Yearly Change	na	3.1%	8.8%	-3.5%	-28.3%	-27.8%	-2.0%
Cumulative Change (based on '98-99)	na	3.1%	12.2%	8.3%	-22.4%	-44.0%	-45.1%
Self-Improve./Adult Continuing Edn.	925.5	932.5	1,016.3	989.1	696.0	461.7	451.0
Non-Reimbursable	159.7	186.5	201.3	186.1	146.3	146.5	144.8

Headcount per FTE

Note: An adjustment was made to the method used to calculate FTE for most credit classes for winter and spring terms 1999 which led to a slight decline in FTE for 1998-99.

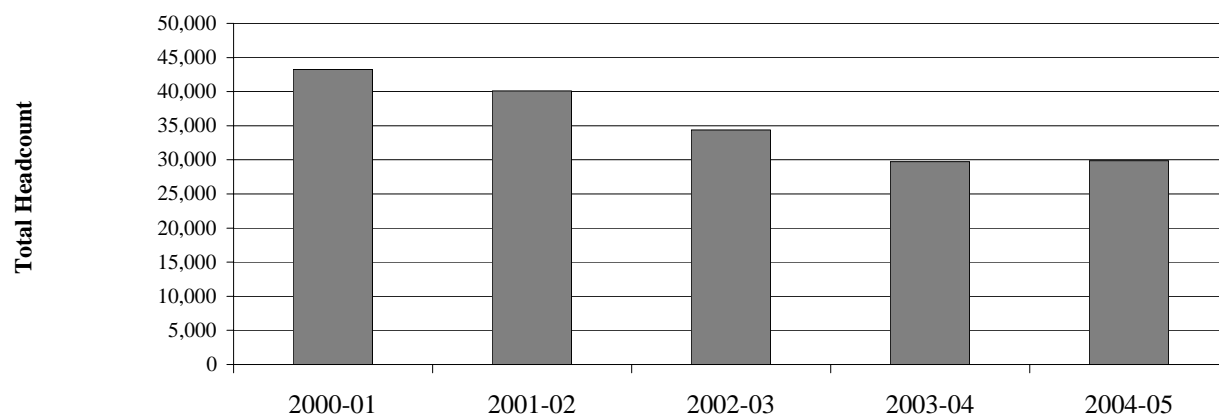
The average headcount per FTE in the graph above is based on 1997-98 through 2004-05 ratios. In 2004-05, it took an average of 2.94 students to generate one 510-clock-hour FTE.

Note: Beginning fall term 2003, courses for fall term were offered over 11 weeks rather than 12 weeks. This resulted in fewer contact hours per course for the term and, therefore, fewer FTE compared to fall terms prior to 2003. The state continues to reimburse colleges on a 12-week basis for fall term under a "hold harmless" agreement.

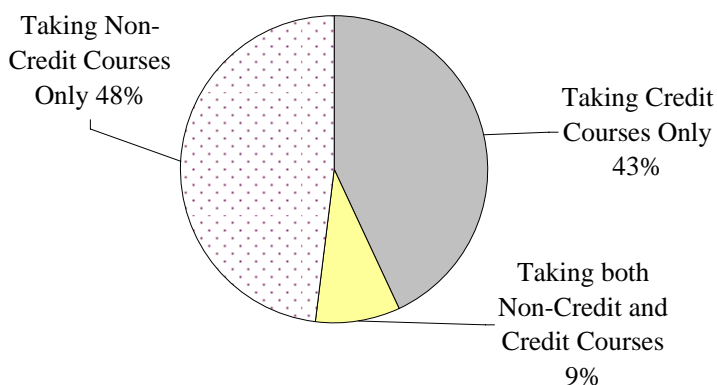
	1997-98	1998-99	1999-00	2000-01	2001-02	2002-03	2003-04	2004-05
Total FTE	12,148.8	11,968.3	12,449.4	12,760.1	13,265.1	12,364.3	10,699.9	10,173.7
Total Headcount	37,954	40,113	41,766	43,223	40,099	34,394	29,743	29,868
Headcount per FTE	3.12	3.35	3.35	3.39	3.02	2.78	2.78	2.94
Yearly Change	na	7.3%	0.1%	1.0%	-10.8%	-8.0%	-0.1%	5.6%
Cumulative Change	na	7.3%	7.4%	8.4%	-3.2%	-11.0%	-11.0%	-6.0%
(based on '97-98)								

Sources: FTE = IRZ2202; Headcount = OCCURS Student files

Total Headcount



2004-05 Headcount



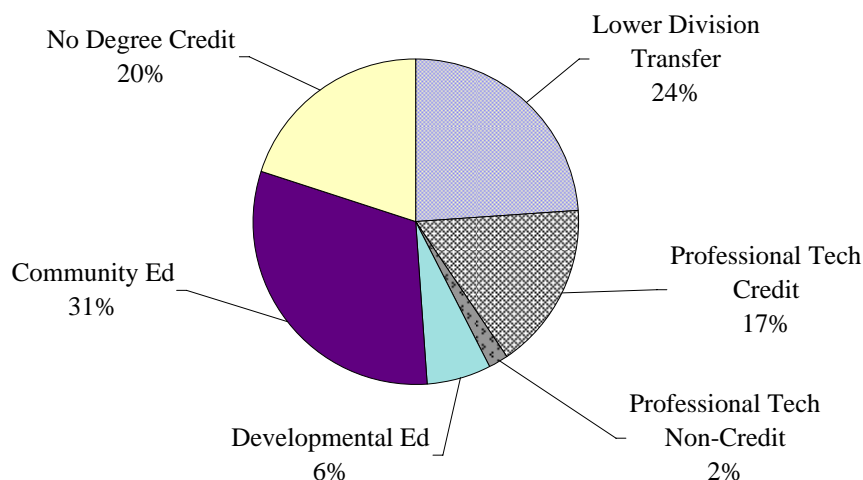
	2000-01	2001-02	2002-03	2003-04	2004-05
Total Headcount	43,223	40,099	34,394	29,743	29,868
Yearly Change	na	-7.2%	-14.2%	-13.5%	0.4%
Cumulative Change	na	-7.2%	-20.4%	-31.2%	-30.9%

(based on '00-01)

Students were counted as credit students if they were enrolled in credit courses any term they attended Lane in 2004-05.
 Credit courses include credit, College High, and Tech Prep courses.
 Credit courses do not include Adult Basic Ed or non-credit courses.

Program Headcount

2004-05 Programs



Lower Division Transfer programs include students who have declared majors in Transfer programs. These include the AAOT, AS, and AG degree programs and Direct Transfer majors.

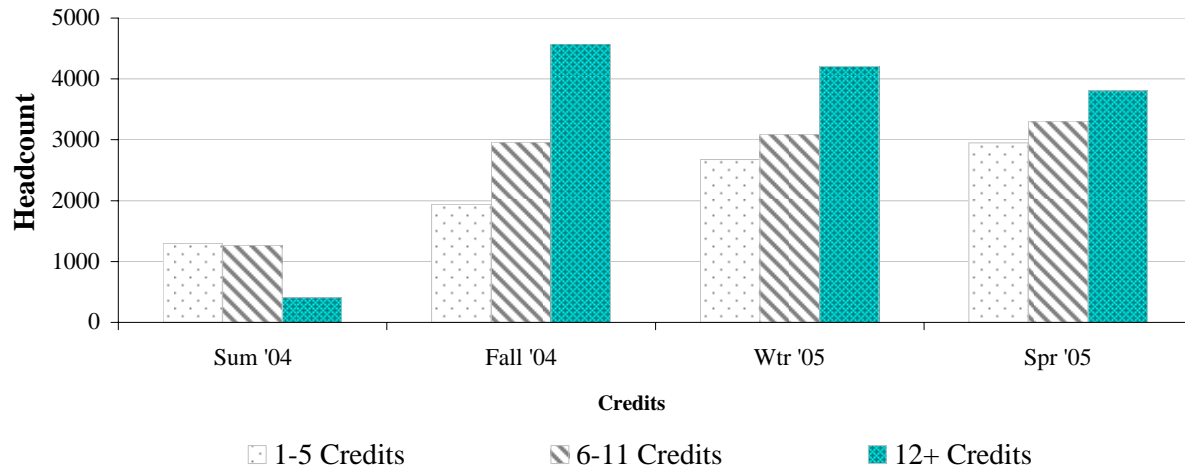
Professional Technical programs include credit students who are pursuing professional technical fields or training. Non-credit professional training includes massage therapy, court reporting, and short-term training.

Developmental education students are in programs such as GED, English as a Second Language, and Adult Basic Education.

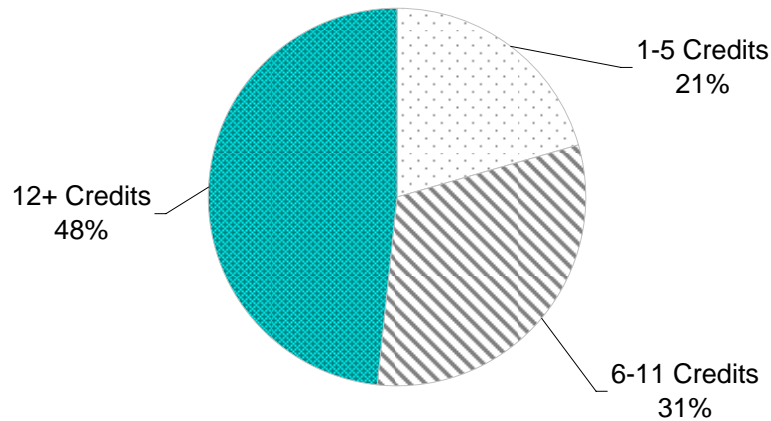
No Degree Credit students are taking credit classes but have not declared a program that includes a degree or direct transfer major.

	2003-04	%	2004-05	%
Lower Division Transfer	7,951	26.7%	7,100	23.8%
Professional Tech Credit	4,904	16.5%	5,011	16.8%
Professional Tech Non-Credit	609	2.0%	620	2.1%
Developmental Ed	2,291	7.7%	1,881	6.3%
Community Ed	9,910	33.3%	9,280	31.1%
No Degree Credit	4,078	13.7%	5,976	20.0%
Total	29,743	100.0%	29,868	100.0%

Enrollment by Credit Hours



**Attempted Credits
Fall Term 2004**



<i>Credits Attempted</i>	Sum '04		Fall '04		Wtr '05		Spr '05	
	#	%	#	%	#	%	#	%
1-5 Credits	1300	43.8%	1939	20.5%	2676	26.8%	2951	29.3%
6-11 Credits	1266	42.6%	2959	31.2%	3091	31.0%	3307	32.9%
12+ Credits	404	13.6%	4574	48.3%	4208	42.2%	3808	37.8%
Totals	2,970	100%	9,472	100%	9,975	100%	10,066	100%

Twenty-three hundred and forty-one (2,341) students attempted 12+ credits in three out of four terms during 2004-05.