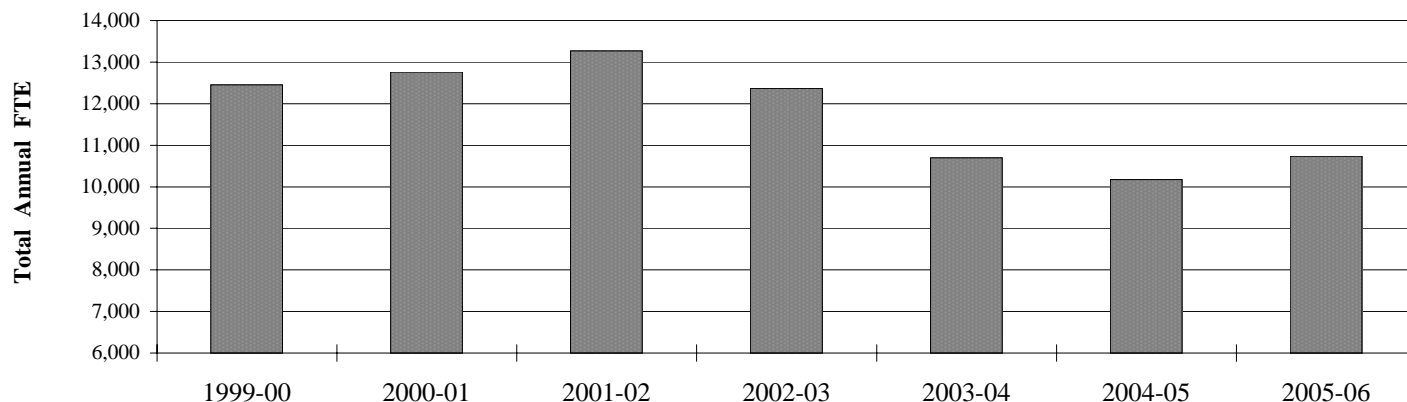


## Total Annual Reported FTE

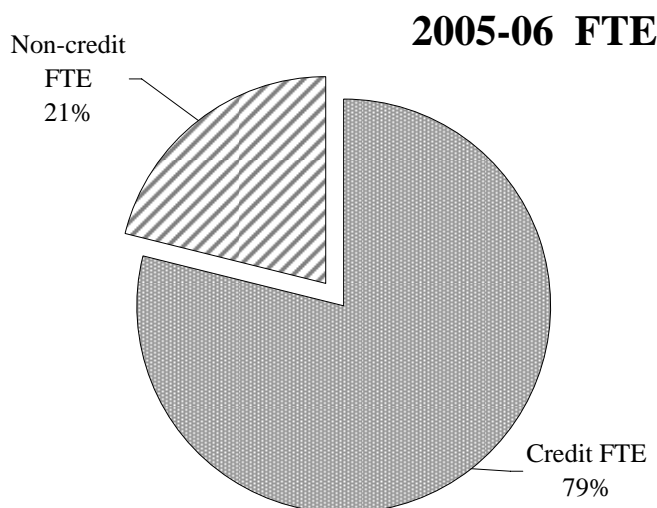
(includes reimbursable and non-reimbursable FTE)



Total annual FTE for Lane increased 5.5% in 2005-06. This includes both reimbursable and non-reimbursable FTE.

Credit FTE are derived from the following reimbursement categories: lower division collegiate, professional technical preparatory, and post-secondary remedial.

Note: Beginning fall term 2003, courses for fall term are offered over 11 weeks rather than 12 weeks. This results in fewer contact hours per course for the term and, therefore, fewer FTE compared to fall terms prior to 2003. The state continues to reimburse colleges on a 12-week basis for fall term under a "hold harmless" agreement.



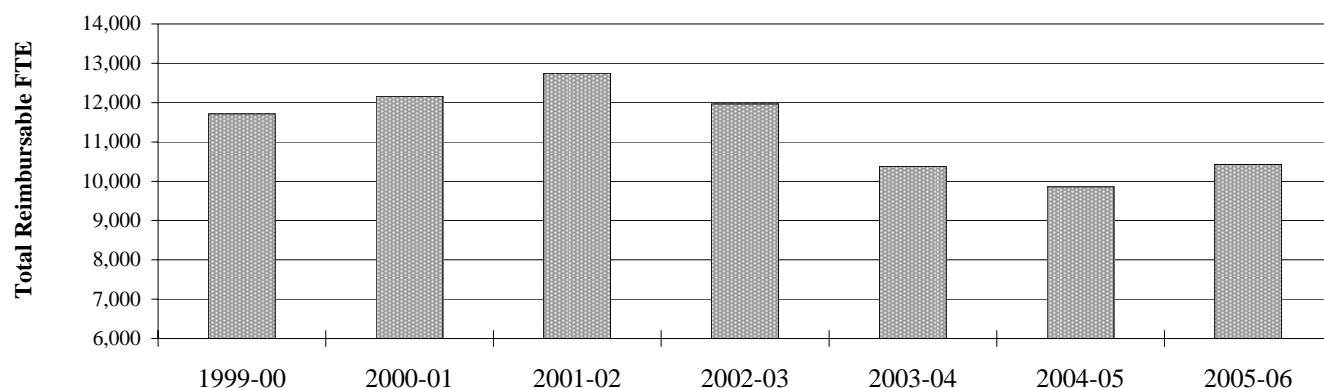
	1999-00	2000-01	2001-02	2002-03	2003-04	2004-05	2005-06
<b>Total Reported FTE</b>	12,449.4	12,760.1	13,265.1	12,364.3	10,699.9	10,173.7	<b>10,738.0</b>
% of Total Annual FTE	100%	100%	100%	100%	100%	100%	100%
Yearly Change	4.0%	2.5%	4.0%	-6.8%	-13.5%	-4.9%	<b>5.5%</b>
Cumulative Change (based on '99-00)		2.5%	6.6%	-0.7%	-14.1%	-18.3%	-13.7%

Source: IRZ2202 and OCCURS Course file and Enrollment Reports.

Institutional Research, Assessment & Planning

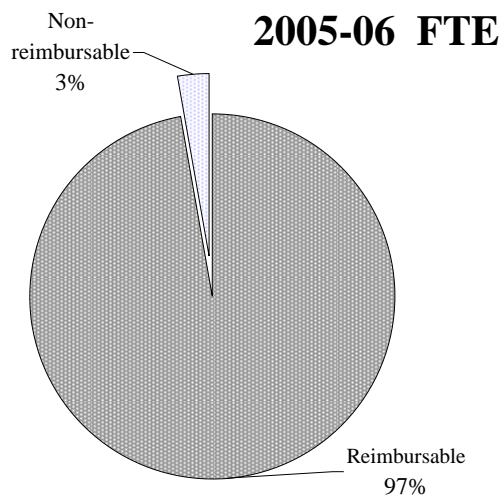
r:\profile\2005-06\fte\totl\_fte.xls

## ***Total Reimbursable FTE***



Total reimbursable FTE increased 5.8% during 2005-06. Reimbursable FTE are derived from most courses taught and students enrolled at Lane. Courses yielding non-reimbursable FTE (i.e., these FTE are not considered in the state funding formula) are described by state instructional guidelines and can be generally categorized as certain types of hobby or recreation courses. Out-of-state students also yield non-reimbursable FTE.

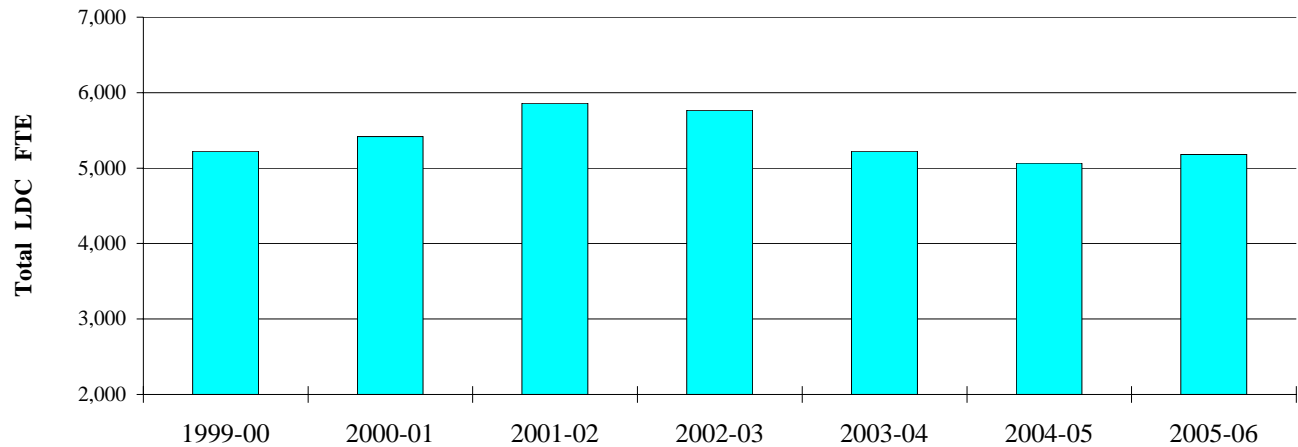
Reimbursable FTE are used in the state funding formula.  
 Note: Beginning fall term 2003, courses for fall term are offered over 11 weeks rather than 12 weeks. This results in fewer contact hours per course for the term and, therefore, fewer FTE compared to fall terms prior to 2003. The state continues to reimburse colleges on a 12-week



	1999-00	2000-01	2001-02	2002-03	2003-04	2004-05	2005-06
Total <b>Reimbursable</b> FTE	11,709.7	12,157.1	12,746.9	11,962.5	10,376.8	9,856.7	10,428.6
% of Total Annual FTE	94.1%	95.3%	96.1%	96.8%	97.0%	96.9%	97.1%
Yearly Change	3.6%	3.8%	4.9%	-6.2%	-13.3%	-5.0%	5.8%
Cumulative Change (based on '99-00)		3.8%	8.9%	2.2%	-11.4%	-15.8%	-10.9%

Source: IRZ2202 and OCCURS Course file and Enrollment Reports; "The Oregon Community College Handbook."

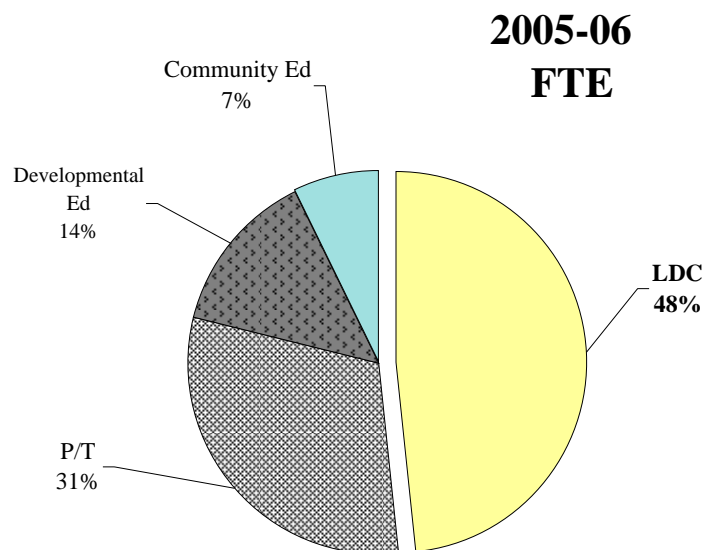
***Lower Division Collegiate (Transfer) FTE***



FTE in this reimbursement category are generated by students enrolled in courses in the Lower Division Collegiate (LDC) category. These courses are transferable to a four-year institution and apply toward a Bachelor's degree.

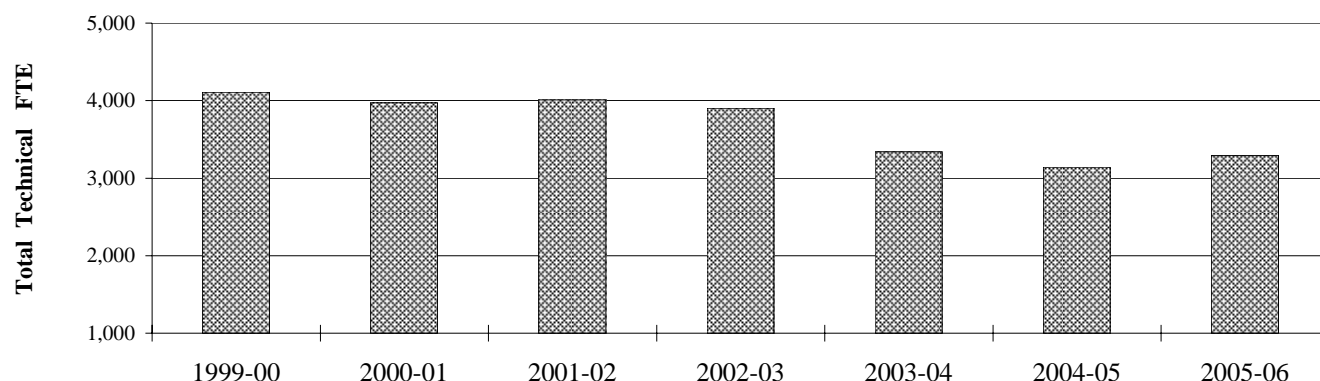
LDC FTE for Lane increased 2.2% in 2005-06.

Note: Beginning fall term 2003, courses for fall term are offered over 11 weeks rather than 12 weeks. This resulted in fewer contact hours per course for the term and, therefore, fewer FTE compared to fall terms prior to 2003. The state continues to reimburse colleges on a 12-week basis for fall term under a "hold harmless" agreement.



	1999-00	2000-01	2001-02	2002-03	2003-04	2004-05	2005-06
Total LDC FTE	5,223.1	5,418.6	5,860.9	5,767.9	5,224.7	5,068.0	5,181.0
% of Total Annual FTE	42.0%	42.5%	44.2%	46.6%	48.8%	49.8%	48.2%
Yearly Change	2.3%	3.7%	8.2%	-1.6%	-9.4%	-3.0%	2.2%
Cumulative Change (based on '99-00)		3.7%	12.2%	10.4%	0.0%	-3.0%	-0.8%

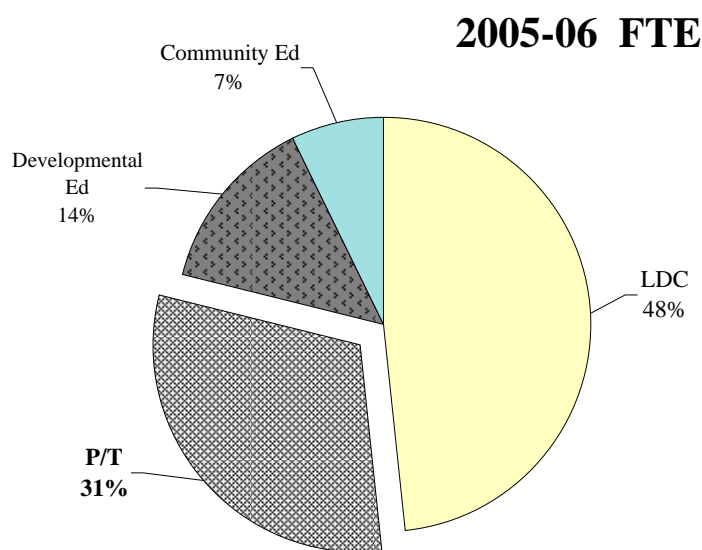
## Professional and Technical FTE



Professional and Technical courses include the reimbursement categories of Preparatory, Supplementary, and Apprenticeship. FTE in this broad group increased 4.7% in 2005-06.

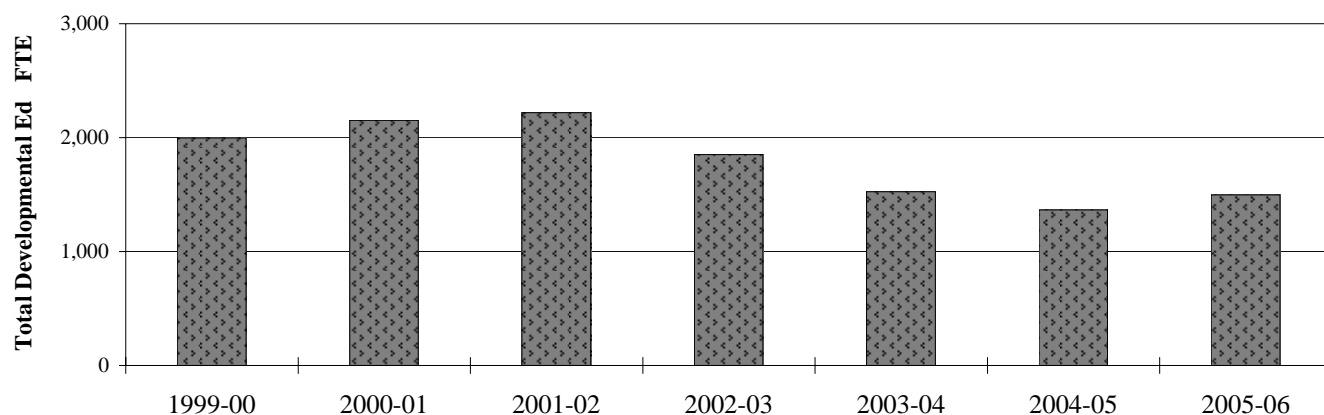
Some of the classes included in this FTE category are offered through College Now and Lane's RTEC program; both enable high school students to begin to train for a technical career while still in high school and to earn college credits while doing so.

Note: Beginning fall term 2003, courses for fall term are offered over 11 weeks rather than 12 weeks. This resulted in fewer contact hours per course for the term and, therefore, fewer FTE compared to fall terms prior to 2003. The state continues to reimburse colleges on a 12-week basis for fall term under a "hold harmless" agreement.



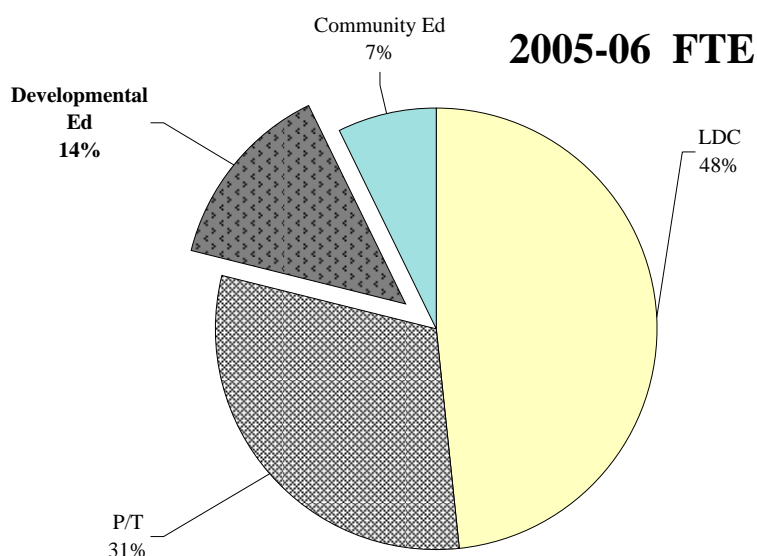
	1999-00	2000-01	2001-02	2002-03	2003-04	2004-05	2005-06
Total Prof. & Tech. FTE	4,109.8	3,973.5	4,009.0	3,902.4	3,341.7	3,143.7	3,291.2
% of Total Annual FTE	33.0%	31.1%	30.2%	31.6%	31.2%	30.9%	30.6%
Yearly Change	5.6%	-3.3%	0.9%	-2.7%	-14.4%	-5.9%	4.7%
Cumulative Change (based on '99-00)		-3.3%	-2.5%	-5.0%	-18.7%	-23.5%	-19.9%
Preparatory	2,781.8	2,759.2	2,962.4	2,993.7	2,689.4	2,587.8	2,485.2
Supplementary	911.6	927.9	790.6	695.5	453.9	384.6	618.5
Apprenticeship	416.4	286.4	256.1	213.2	198.5	171.3	187.5

## Developmental Education FTE



The broad group of Developmental Education includes courses from the following reimbursement categories: English as a Second Language (ESL), Adult Basic Education (ABE), General Education Development (GED), Adult High School (AHS), and Post-Secondary Remedial (PSR).

Note: Beginning fall term 2003, courses for fall term are offered over 11 weeks rather than 12 weeks. This resulted in fewer contact hours per course for the term and, therefore, fewer FTE compared to fall terms prior to 2003. The state continues to reimburse colleges on a 12-week basis for fall term under a "hold harmless" agreement.

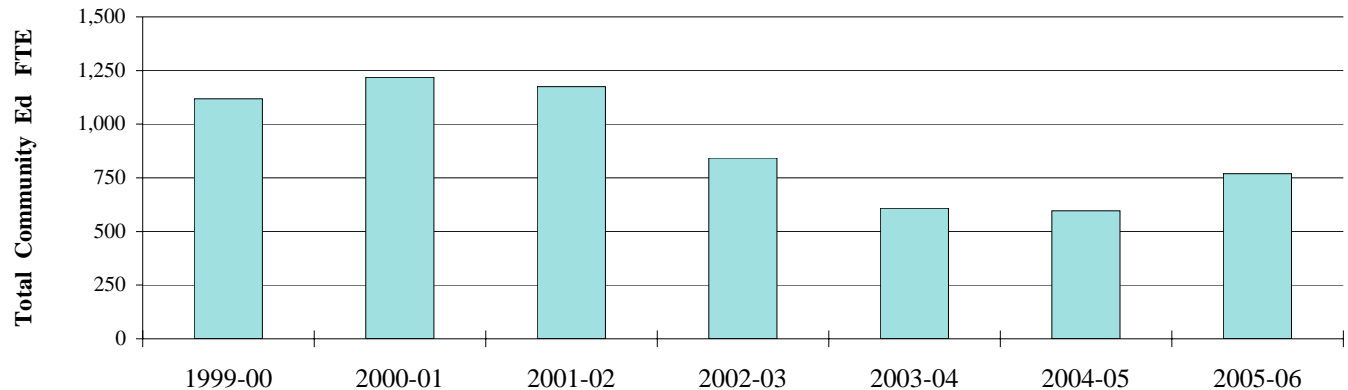


	1999-00	2000-01	2001-02	2002-03	2003-04	2004-05	2005-06
Total <b>Developmental</b> FTE	1,997.5	2,150.4	2,219.8	1,851.3	1,524.9	1,366.3	1,496.0
% of Total Annual FTE	16.0%	16.9%	16.7%	15.0%	14.3%	13.4%	13.9%
Yearly Change	5.9%	7.7%	3.2%	-16.6%	-17.6%	-10.4%	9.5%
Cumulative Change (based on '99-00)		7.7%	11.1%	-7.3%	-23.7%	-31.6%	-25.1%
ESL	308.3	272.1	298.9	308.0	258.0	218.3	224.9
ABE	365.7	540.7	508.6	295.4	259.9	290.7	358.5
GED	278.5	271.4	245.8	276.1	182.0	84.8	107.0
AHS	311.5	283.2	251.2	55.9	-	-	-
PSR	733.5	783.1	915.3	915.9	825.1	772.5	805.6

Source: IRZ2202; OCCURS Annual Enrollment Rpt.

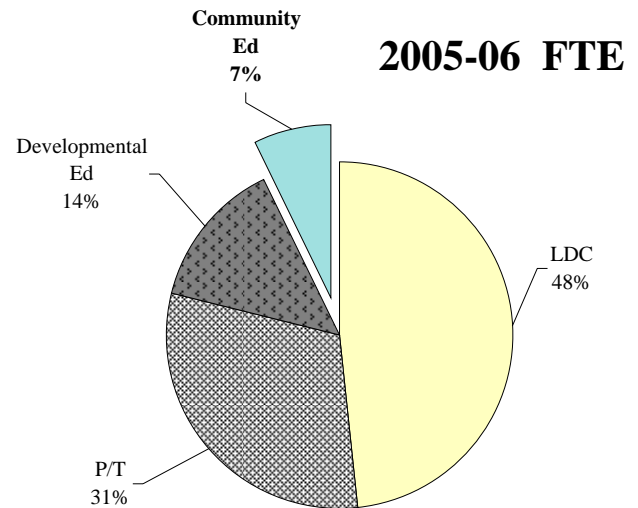
r:\profile\2005-06\fte\devel\_ed.xls

## Community Education FTE



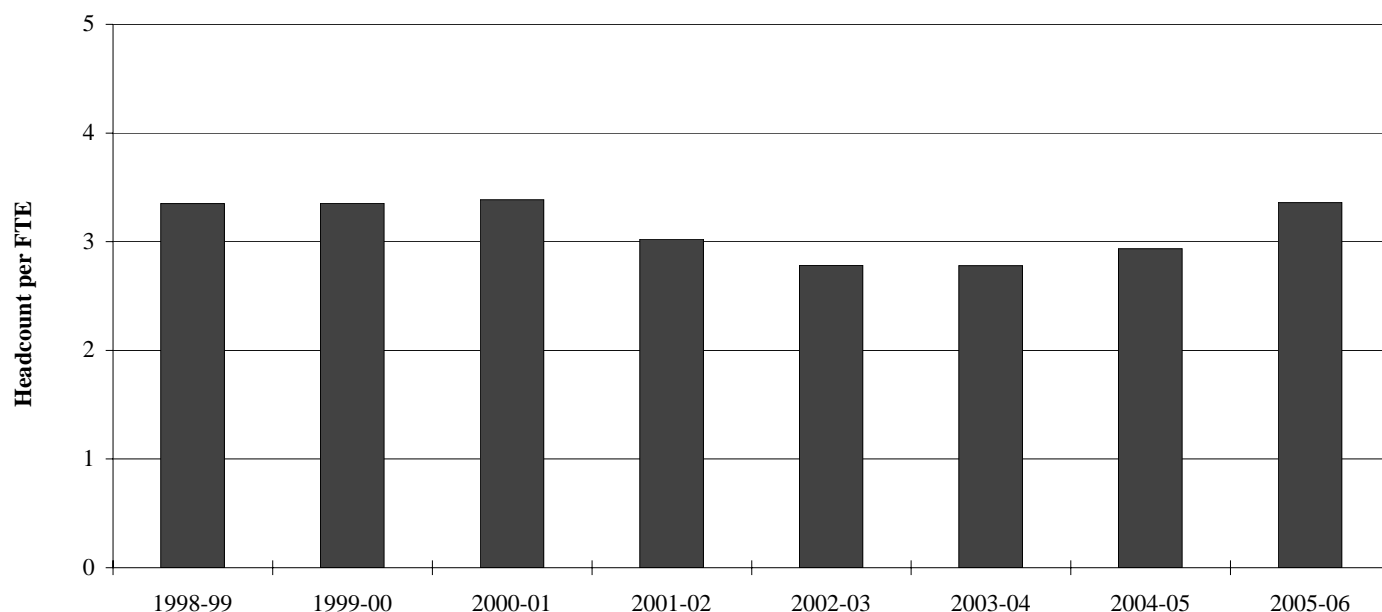
FTE in this group are derived from courses in the Self-Improvement/Adult Continuing Ed. and Non-reimbursable reimbursement categories (Note: The Self-Improvement category was changed to Adult Continuing Edn. during the 2002 Special Legislative Session and classes that are not health-, safety-, or workforce-related are no longer reimbursable). Lane departments contributing to this group include the Business Development & Contract Training, Continuing Education & Educational Outreach, LCC at Cottage Grove and LCC at Florence. Note: Non-reimbursable FTE are derived from a particular category of courses and from out-of-state students enrolling in courses that would otherwise yield reimbursable FTE.

Note: Beginning fall term 2003, courses for fall term are offered over 11 weeks rather than 12 weeks. This resulted in fewer contact hours per course for the term and, therefore, fewer FTE compared to fall terms prior to 2003. The state continues to reimburse colleges on a 12-week basis for fall term under a "hold harmless" agreement.



	1999-00	2000-01	2001-02	2002-03	2003-04	2004-05	2005-06
Total <b>Community Ed</b> FTE	1,119.0	1,217.6	1,175.1	842.3	608.2	595.8	769.8
% of Total Annual FTE	9.0%	9.5%	8.9%	6.8%	5.7%	5.9%	7.2%
Yearly Change	3.1%	8.8%	-3.5%	-28.3%	-27.8%	-2.0%	29.2%
Cumulative Change (based on '99-00)		8.8%	5.0%	-24.7%	-45.6%	-46.8%	-31.2%
Self-Improve./Adult Continuing Edn.	932.5	1,016.3	989.1	696.0	461.7	451.0	598.3
Non-Reimbursable	186.5	201.3	186.1	146.3	146.5	144.8	171.5

## Headcount per FTE



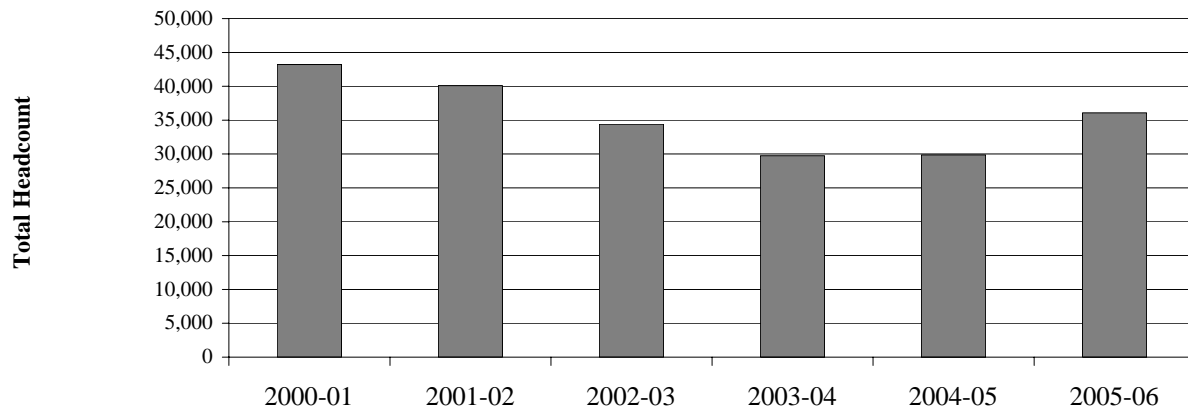
The average headcount per FTE in the graph above is based on 1998-99 through 2005-06 ratios. In 2005-06, it took an average of 3.36 students to generate one 510-clock-hour FTE.

Note: Beginning fall term 2003, courses for fall term were offered over 11 weeks rather than 12 weeks. This resulted in fewer contact hours per course for the term and, therefore, fewer FTE compared to fall terms prior to 2003. The state continues to reimburse colleges on a 12-week basis for fall term under a "hold harmless"

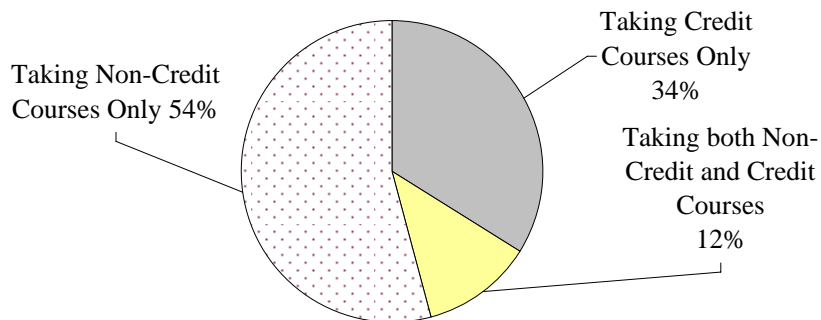
	1998-99	1999-00	2000-01	2001-02	2002-03	2003-04	2004-05	2005-06
Total FTE	11,968.3	12,449.4	12,760.1	13,265.1	12,364.3	10,699.9	10,173.7	10,738.0
Total Headcount	40,113	41,766	43,223	40,099	34,394	29,743	29,868	36,089
<b>Headcount per FTE</b>	3.35	3.35	3.39	3.02	2.78	2.78	2.94	3.36
Yearly Change	7.3%	0.1%	1.0%	-10.8%	-8.0%	-0.1%	5.6%	14.5%
Cumulative Change		0.1%	1.1%	-9.8%	-17.0%	-17.1%	-12.4%	0.3%
(based on '98-99)								

Sources: OCCURS enrollment files

## ***Total Headcount***



### **2005-06 Headcount**



	2000-01	2001-02	2002-03	2003-04	2004-05	2005-06
Total Headcount	43,223	40,099	34,394	29,743	29,868	36,089
Yearly Change	na	-7.2%	-14.2%	-13.5%	0.4%	20.8%
Cumulative Change	na	-7.2%	-20.4%	-31.2%	-30.9%	-16.5%

(based on '00-01)

Students were counted as credit students if they were enrolled in credit courses any term they attended Lane in 2005-06.

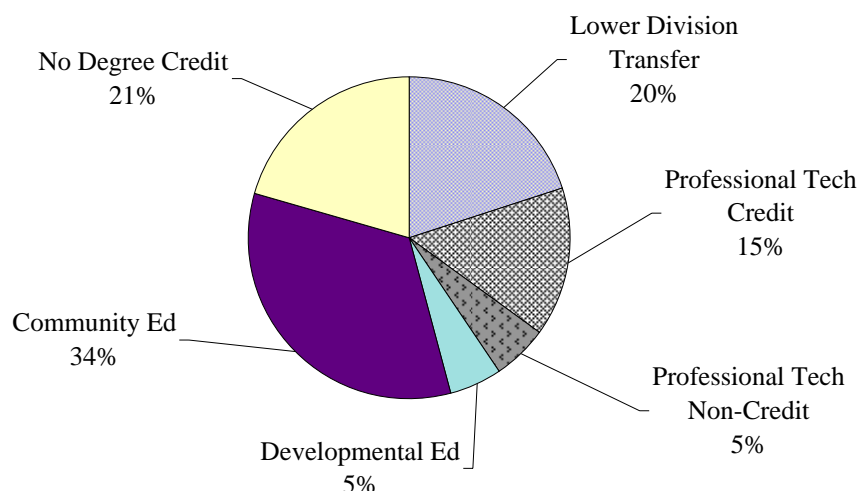
Credit courses include credit, College High, and Tech Prep courses.

Credit courses do not include Adult Basic Ed or non-credit courses.



## Program Headcount

### 2005-06 Programs



Lower Division Transfer programs include students who have declared majors in Transfer programs. These include the AAOT, AS, and AG degree programs and Direct Transfer majors.

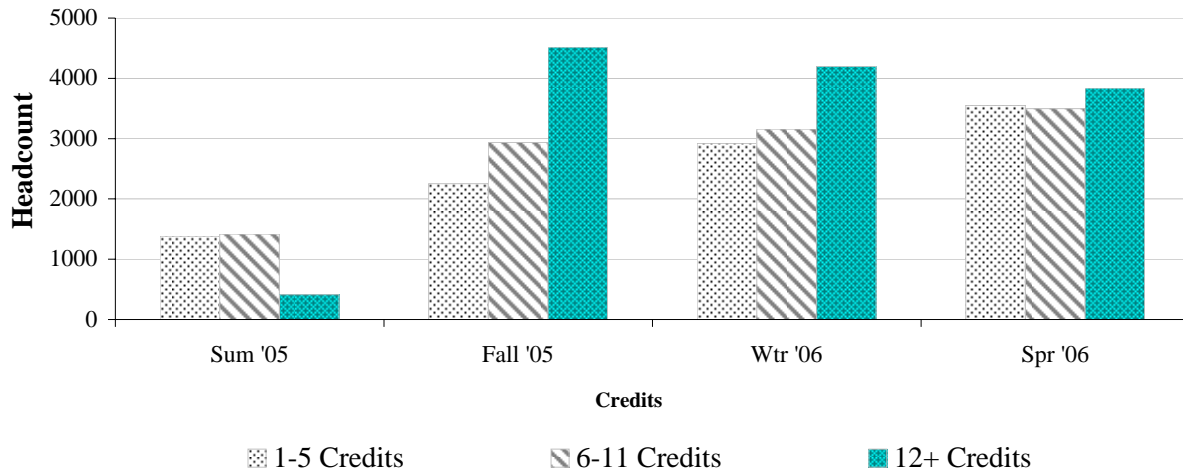
Professional Technical programs include credit students who are pursuing professional technical fields or training. Non-credit professional training includes massage therapy, court reporting, and short-term training.

Developmental education students are in programs such as GED, English as a Second Language, and Adult Basic Education.

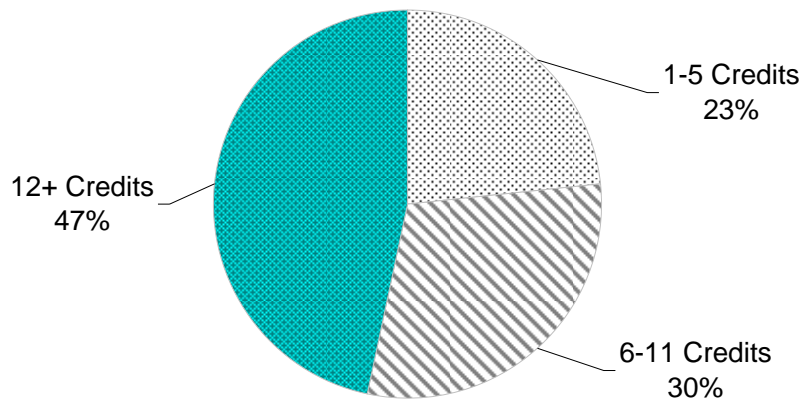
No Degree Credit students are taking credit classes but have not declared a program that includes a degree or direct transfer major.

	2003-04	%	2004-05	%	2005-06	%
Lower Division Transfer	7,943	26.7%	7,092	23.7%	7,208	20.0%
Professional Tech Credit	4,903	16.5%	5,089	17.0%	5,417	15.0%
Professional Tech Non-Credit	609	2.0%	619	2.1%	1,979	5.5%
Developmental Ed	2,261	7.6%	1,845	6.2%	1,936	5.4%
Community Ed	9,949	33.4%	9,250	31.0%	12,125	33.6%
No Degree Credit	4,078	13.7%	5,973	20.0%	7,424	20.6%
Total	29,743	100.0%	29,868	100.0%	36,089	100.0%

***Enrollment by Credit Hours***



**Attempted Credits  
Fall Term 2005**



<i>Credits Attempted</i>	Sum '05		Fall '05		Wtr '06		Spr '06	
	#	%	#	%	#	%	#	%
1-5 Credits	1384	43.1%	2252	23.2%	2922	28.4%	3551	32.6%
6-11 Credits	1418	44.1%	2938	30.3%	3158	30.7%	3497	32.1%
12+ Credits	412	12.8%	4517	46.5%	4199	40.9%	3838	35.3%
Totals	3214	100%	9707	100%	10279	100%	10886	100%

Twenty-two hundred and ninety-four (2,294) students attempted 12+ credits in three out of four terms during 2005-06.