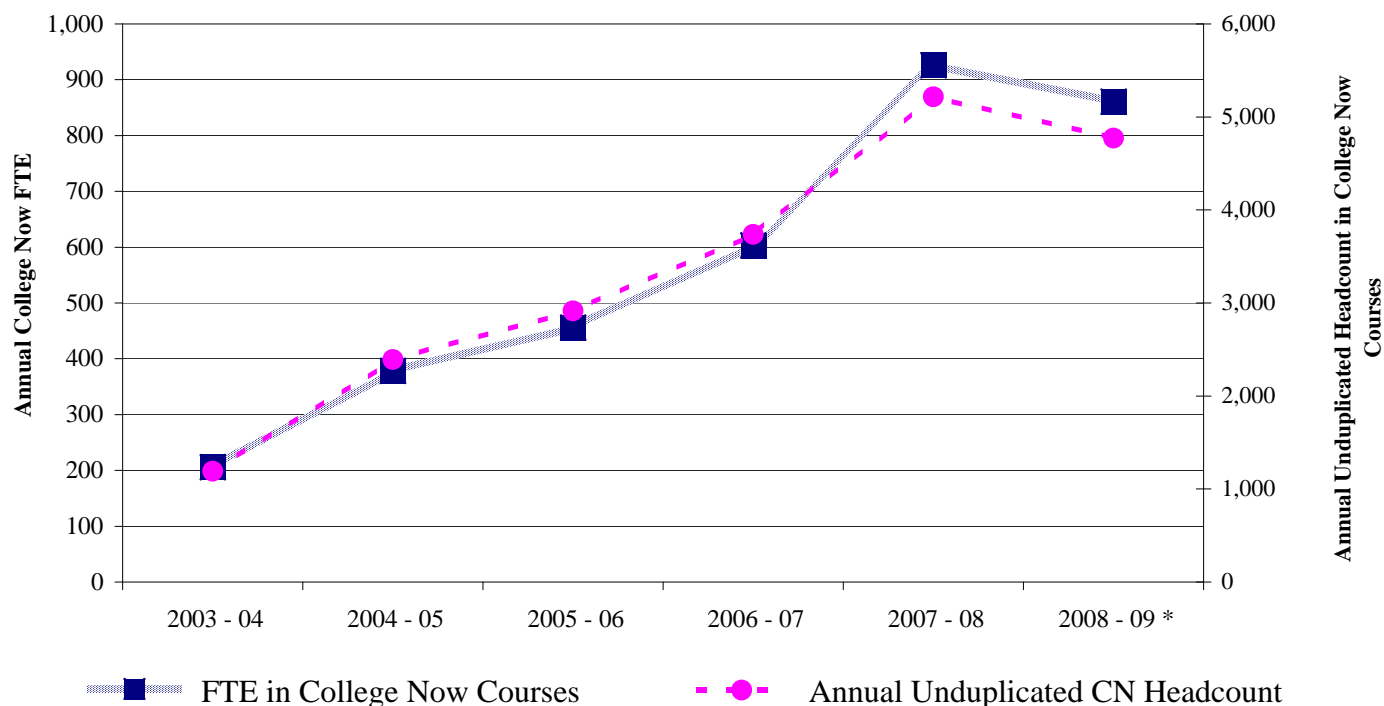


# Key Benchmarks -- LANE Community College

## College Now Enrollment



- ◆ During the 2008-09 academic year, 4,772 students were enrolled in College Now courses, yielding 861 FTE (compared to 5,215 students and 926 FTE in 2007-08).
- ◆ The number of students enrolled in College Now courses decreased 8.5% and FTE decreased 7.1% from 2007-08 to 2008-09.

**Analysis and Action:** High school students enrolled in Lane's College Now Program earn lower division academic transfer and entry level career/technical course credits that also satisfy high school graduation requirements. College Now is part of a planned effort to achieve a learning continuum that starts in high school and extends through the second year at the community college, and if a student chooses, on to a four-year institution. College Now classes are taught by Lane-approved high school teachers using college course outlines and college textbooks.

In addition to College Now, Lane's Office of High School Connections also operates Lane's Regional Technical Education Consortium (RTEC) program which offers career/technical courses to high school students in the district who do not have those classes available at their high school. Other activities designed to help connect high school students with Lane include: Hands on Career Day, Lane Preview Night, campus tours, an annual workshop for high school counselors, visitation days for students of color and diverse populations, college fairs and career fairs. The Student Recruitment & Outreach Coordinator is active with high schools in Lane County.

### Notes:

- 1) The Registration fee for College Now courses was discontinued at the start of the 2004-05 academic year.
- 2) \* Beginning with 2008-09, ODCCWD implemented a change in the method used to account for College Now students.

**Data Source:** OCCURS enrollment data.