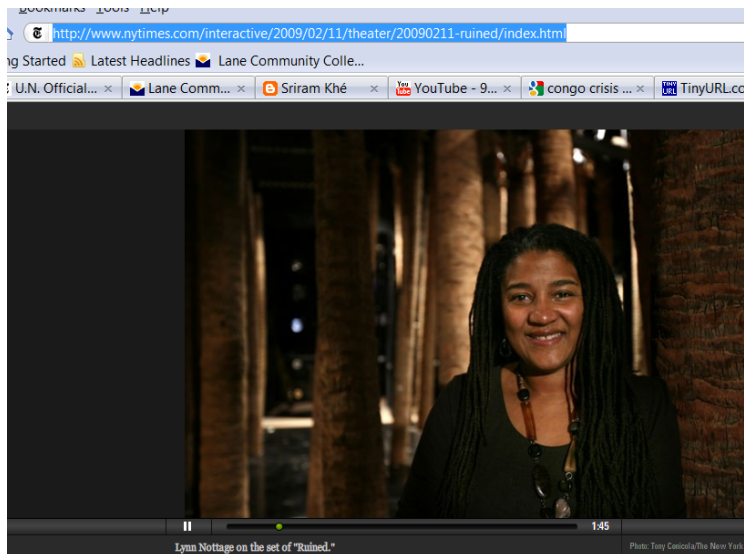


September 11, 2010

### Friends:

It is September 11<sup>th</sup>, 2010, nine years after the World Trade Center attacks, and a time for us all to observe this horrific event. Each September 11<sup>th</sup>, I spend time reviewing materials that characterize the different facets of this catastrophic offense to mankind. Here is a 2:49 minute clip ([http://www.youtube.com/watch?v=8Mz0\\_x7313I](http://www.youtube.com/watch?v=8Mz0_x7313I)) that captures the south tower collapsing.



We would do well to take these occasions to remember that there are so many other atrocities that happen in the world we live in. This summer in Ashland I saw the play “Ruined” by Lynn Nottage, which exposes the dreadful crimes happening to women in Congo. Here is a 2-minute clip from the New York Times (<http://tinyurl.com/2e3k49q>). The last two months alone 500 women were raped in eastern Congo (see New York Times, <http://preview.tinyurl.com/284ds8f>).

What we do at Lane matters in so many ways. We often observe that what we do transforms lives through learning. It is important to realize that this is true not just in terms of economic self-improvement, but also in terms of educating citizens who have the capacity to take in world events, to react to them in skillful and moral ways, and to help create a world where atrocities like these are not supported, and hopefully one day no longer occur.

Now, moving onto the 2010-2011 academic year.

## **Student Enrollment for Fall 2010:**

We are expecting another enrollment surge for 2010-2011; yes an increase even above last year which was in itself a 17.2% growth over 2008-2009. At this point we do not have final FTE numbers from IRAP but it appears that the registrations are up 15-20% for Fall 2010 over this time in Fall 2009. At the same time, students are enrolling earlier this year than they did last year and therefore we do not know how much of the growth is due to new student enrollment and how much is due to early registrations. The important point is to be prepared for the another surge and help provide students the necessary support as they encounter long lines and the fact that they cannot get into classes that they need.

Here are a few ways that you can be prepared to help students in the Fall.

1. Check the Lane Community Cares website at <http://www.lanecc.edu/oasa/communitycares.html>. This website will be updated regularly to provide you information that you should have regarding parking, bookstore issues, food services and other services.
2. Let's help our student by not using the parking lots for the first three weeks of the term. How can you do this?
  - Have your partner, friend, or colleague drop you off in the morning and pick you up in the evening.
  - Sign up for a one-credit fitness center class and get a free bus pass. This is a win-win – you commit to your wellness and fitness, help the environment, and help our students find parking. And btw, this will generate FTE for the college as well ☺ .
  - LTD has provided free one-day passes exclusively for Lane for the week of Sept. 23-28. Pick one up at the Information Window in Building #1.
  - Craig Taylor says, ride your bike. Lane added several new bike racks this summer.
  - Arrive early. Last year, 200 to 300 cars competed for spots between 10 a.m. to 2 p.m. during the first few weeks of fall term.
  - When communicating with students let them know, and ask them to spread the message, that they should not drive their cars to Lane but rather use alternate transportation methods

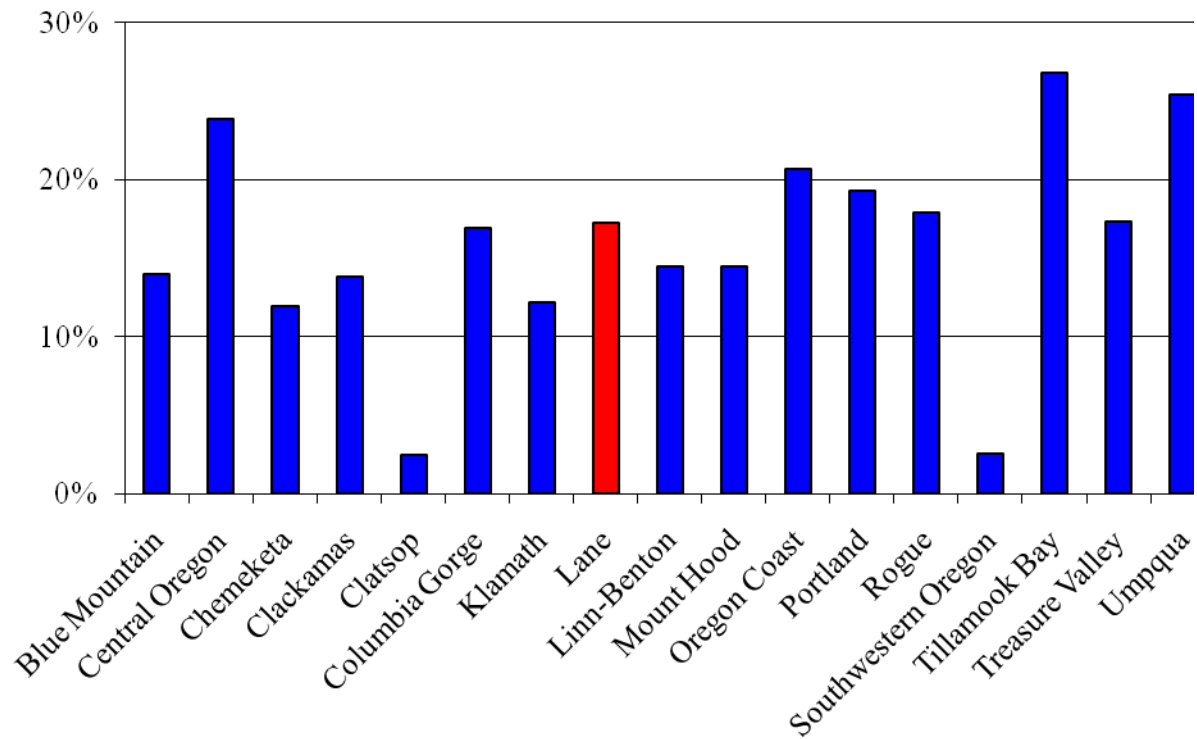
## Student Enrollments for 2009-2010

I have been working to keep you up-to-date on our enrollments over the last year. Here is the unaudited FTE for 2009-2010 for all seventeen community colleges in Oregon. Lane's grew 17.2% compared to the average growth of 16.3% for all community colleges. Lane ranked 8<sup>th</sup> out of the 17 in its percentage increase with Tillamook Bay leading with 26.8%. However, it should be noted that Tillamook Bay is a very small school with a total FTE of 431 compared to Lane at 14,976. Portland, the largest of the community colleges exceeded Lane with a growth of 19.3% and a total FTE of 25,199.

| College             | Total 2009-10 Reimbursable FTE with Hold Harmless Applied | Total 2008-9 Reimbursable FTE with Hold Harmless Applied | Increase/ Decrease in Reimbursable FTE | % Increase/ Decrease in Reimbursable FTE |
|---------------------|---|--|--|--|
| Blue Mountain       | 2,553.77  | 2,240.96   | 312.81                                 | 14.0%                                    |
| Central Oregon      | 6,163.79  | 4,976.26   | 1,187.53                               | 23.9%                                    |
| Columbia Gorge      | 1,257.04  | 1,075.51   | 181.53                                 | 16.9%                                    |
| Chemeketa           | 13,312.21   | 11,893.46  | 1,418.75                               | 11.9%                                    |
| Clackamas           | 8,833.50  | 7,760.36   | 1,073.14                               | 13.8%                                    |
| Clatsop             | 1,473.36  | 1,438.45   | 34.91                                  | 2.4%                                     |
| Klamath             | 1,796.24  | 1,600.95   | 195.29                                 | 12.2%                                    |
| <b>Lane</b>         | <b>14,976.91</b>  | <b>12,775.61</b>   | <b>2,201.30</b>                        | <b>17.2%</b>                             |
| Linn-Benton         | 7,997.80  | 6,986.76   | 1,011.04                               | 14.5%                                    |
| Mount Hood          | 10,692.49   | 9,341.45   | 1,351.04                               | 14.5%                                    |
| Oregon Coast        | 566.18  | 469.36   | 96.82                                  | 20.6%                                    |
| Portland            | 30,065.81   | 25,199.52  | 4,866.29                               | 19.3%                                    |
| Rogue               | 5,909.07  | 5,012.23   | 896.84                                 | 17.9%                                    |
| Southwestern Oregon | 3,254.33  | 3,173.90   | 80.43                                  | 2.5%                                     |
| Tillamook Bay       | 431.25  | 340.12   | 91.13                                  | 26.8%                                    |
| Treasure Valley     | 2,340.56  | 1,995.04   | 345.52                                 | 17.3%                                    |
| Umpqua              | 4,730.24  | 3,771.23   | 959.01                                 | 25.4%                                    |
| <b>Total</b>        | <b>116,354.55</b>   | <b>100,051.17</b>  | <b>16,303.38</b>                       | <b>16.3%</b>                             |

Given below is the graphical representation of the percent increase of FTE in 2009-2010 over 2008-2009. Lane is in red.

Percent Increase in Total Annual Reimbursable FTE w/Hold Harmless FTE  
Applied  
2008-09 to 2009-10



That's all for now.

Until next time .....

Sonya  
(Kayaking for the first time this summer)

