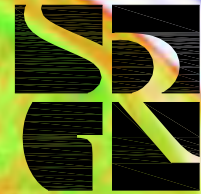




SRG PARTNERSHIP INC



Lane Community College

HEALTH AND WELLNESS BUILDING

November 5, 2008



calming, reduces stress

focus on learning

sustainability is a priority
climate neutrality

"Don't think too small"

encourage fitness

flexible

promote integration and collabora

student centered

HEALTH AND WELLNESS BUILDING



aerial

Lane Community College

HEALTH AND WELLNESS BUILDING

Eugene, Oregon



scale: 1" = 300'

SRG PARTNERSHIP INC

July 29, 2008



site photos

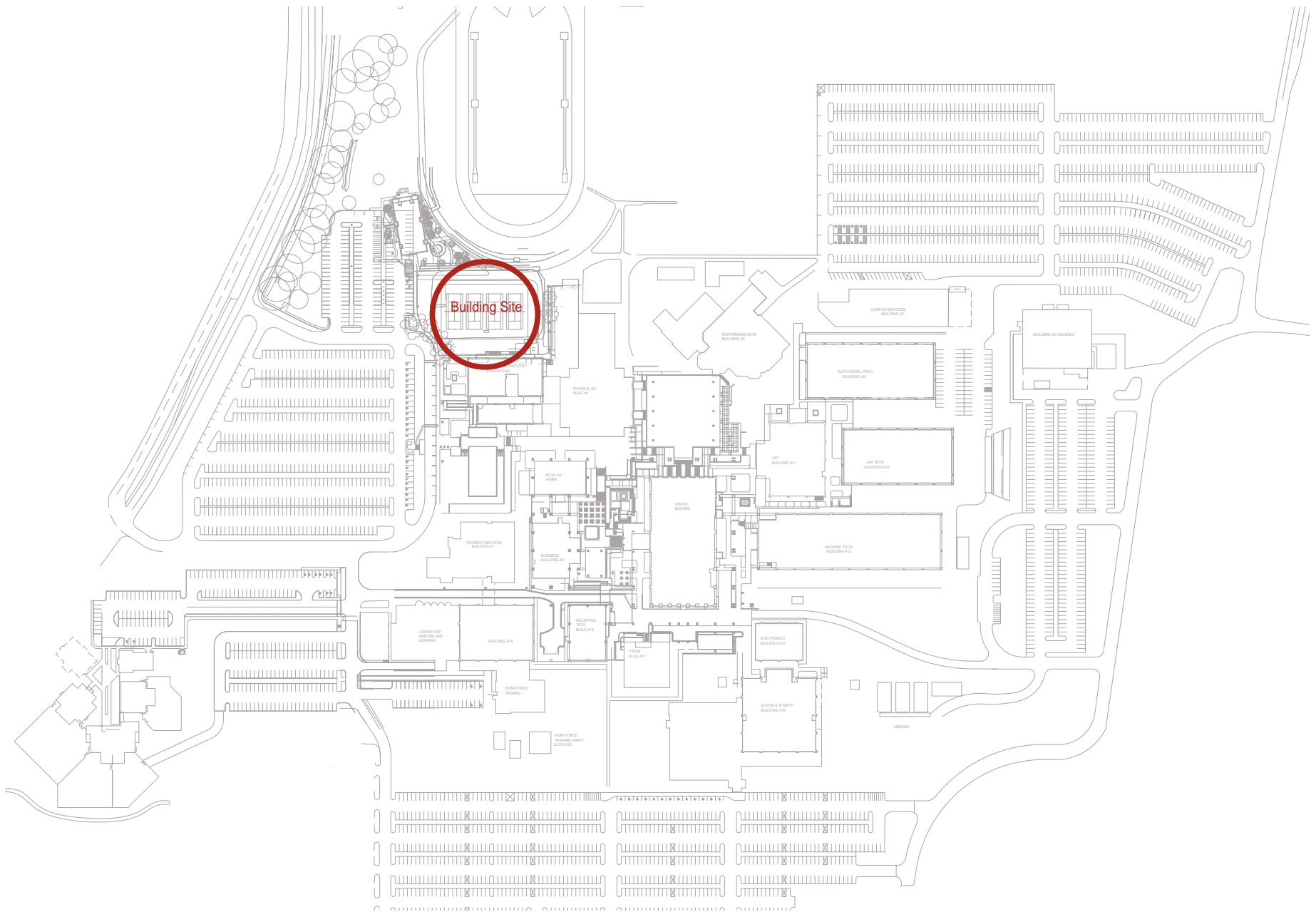
Lane Community College

HEALTH AND WELLNESS BUILDING Eugene, Oregon

SRG PARTNERSHIP INC



October 9, 2008



campus plan

Lane Community College

HEALTH AND WELLNESS BUILDING

Eugene, Oregon

scale: 1" = 300'

SRG PARTNERSHIP INC

July 29, 2008

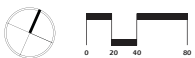


campus opportunities and constraints plan

Lane Community College

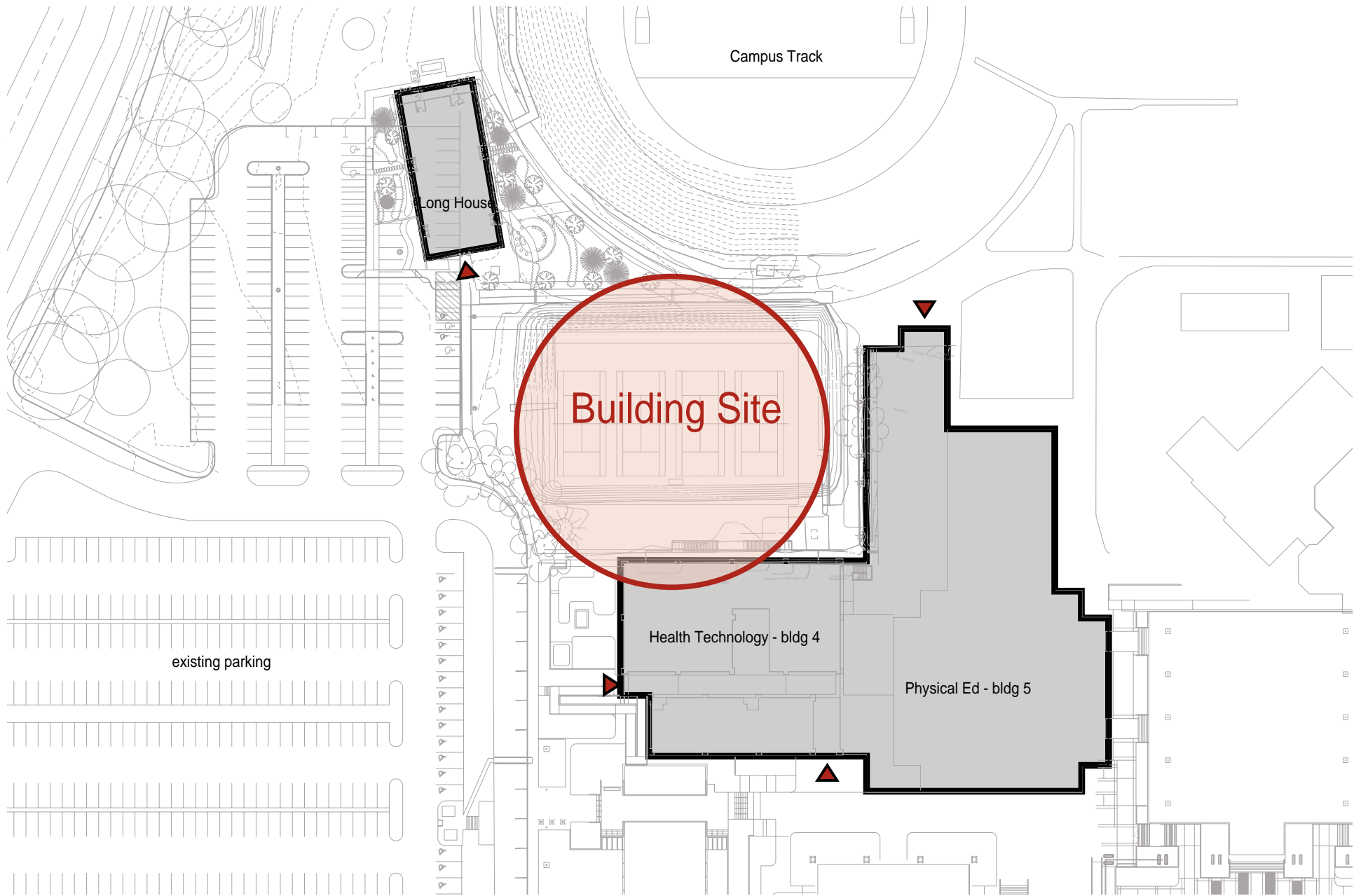
HEALTH AND WELLNESS BUILDING

Eugene, Oregon



SRG PARTNERSHIP INC

GREENWORKS October 9, 2008



building site

Lane Community College

HEALTH AND WELLNESS BUILDING

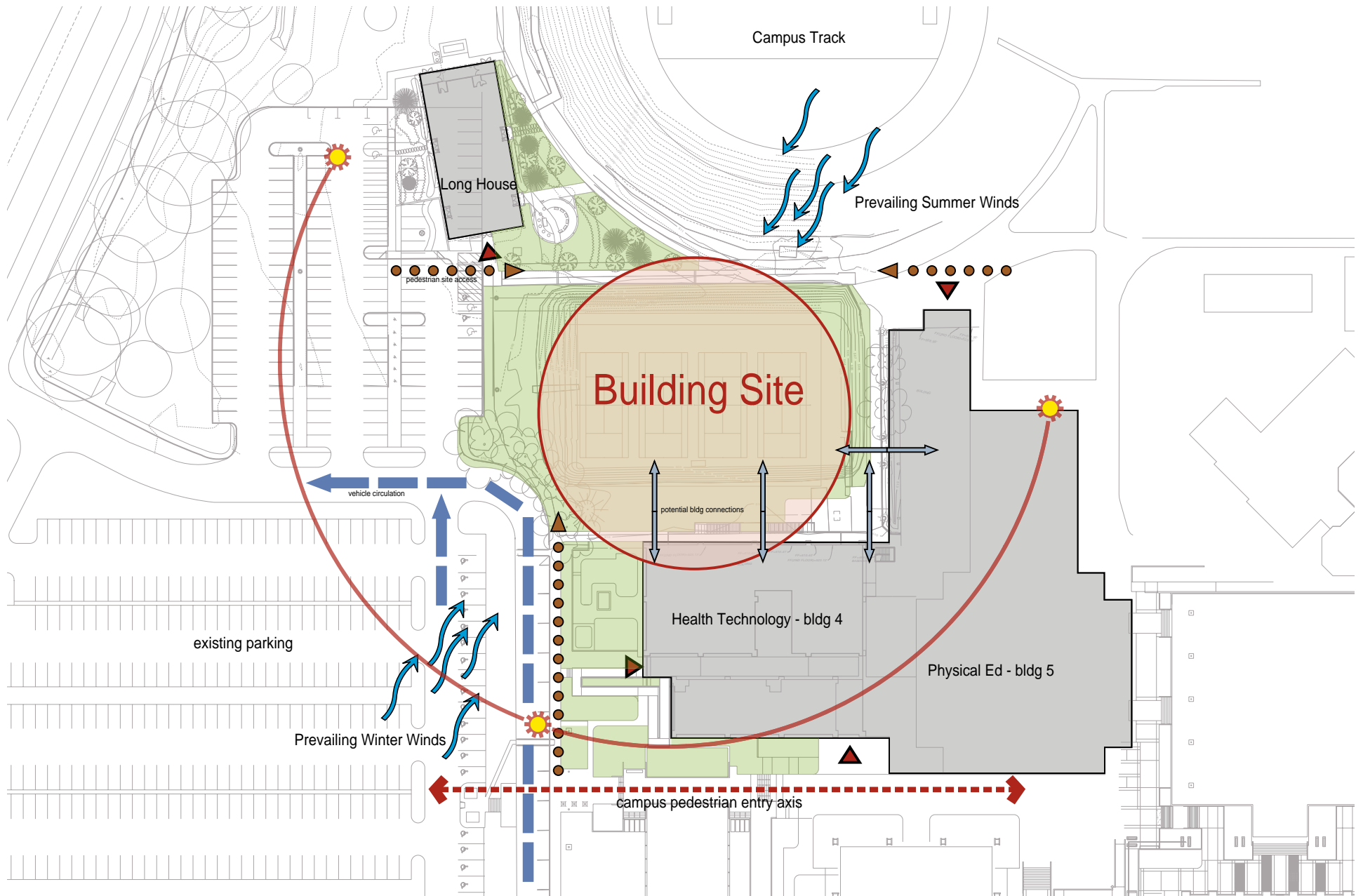
Eugene, Oregon



scale: 1" = 100'

SRG PARTNERSHIP INC

September 18, 2008



site analysis

Lane Community College

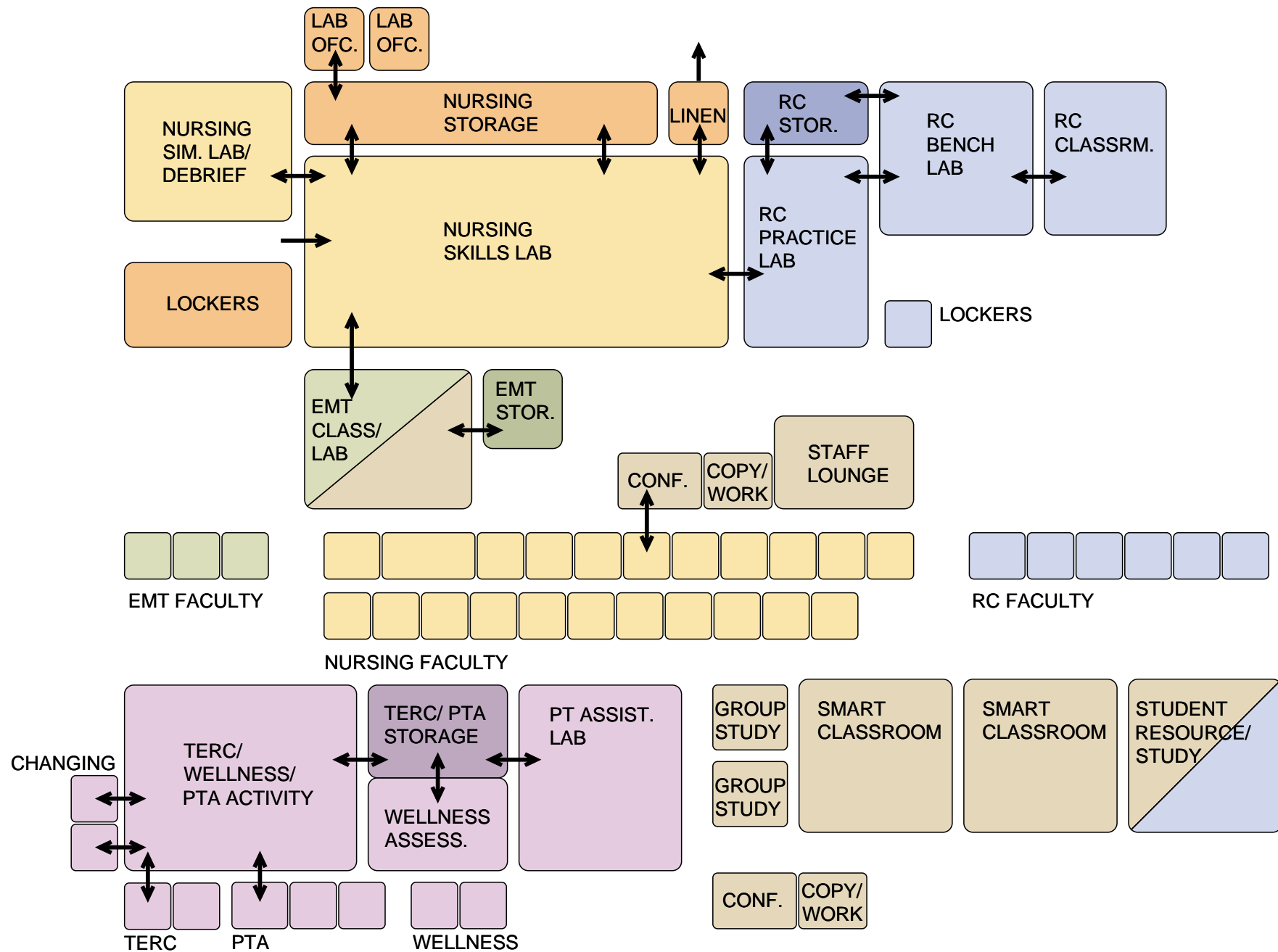
HEALTH AND WELLNESS BUILDING

Eugene, Oregon

⊕ scale: 1" = 100'

SRG PARTNERSHIP INC

July 29, 2008



space adjacency

Lane Community College

HEALTH AND WELLNESS BUILDING

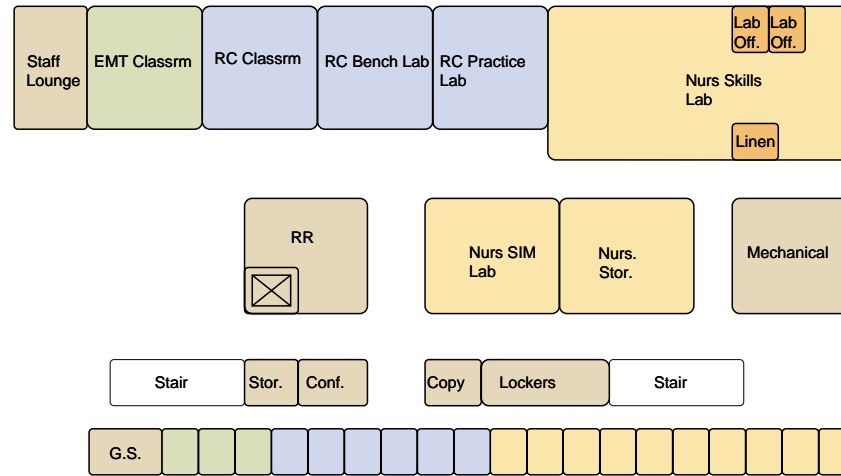
Eugene, Oregon

scale: 1" = 300'

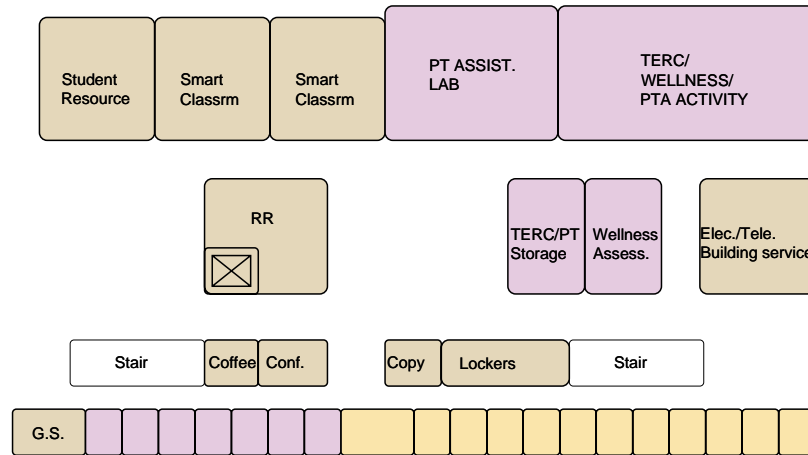
SRG PARTNERSHIP INC

August 19, 2008

level 2



level 1



space organizational diagram

Lane Community College

HEALTH AND WELLNESS BUILDING

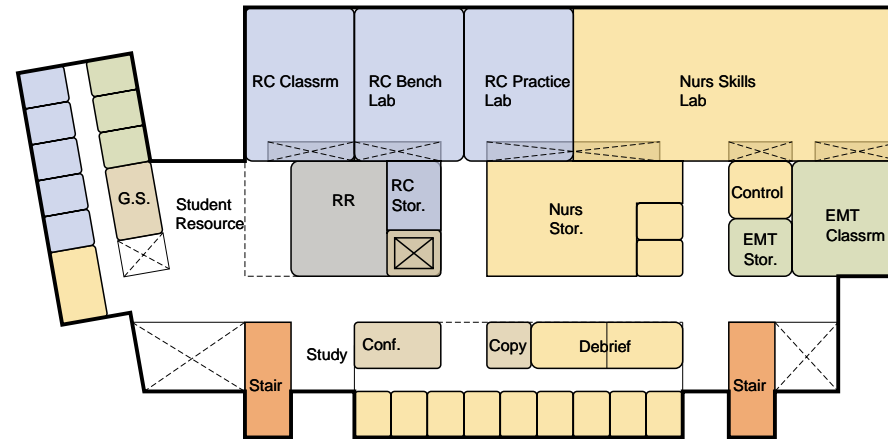
Eugene, Oregon



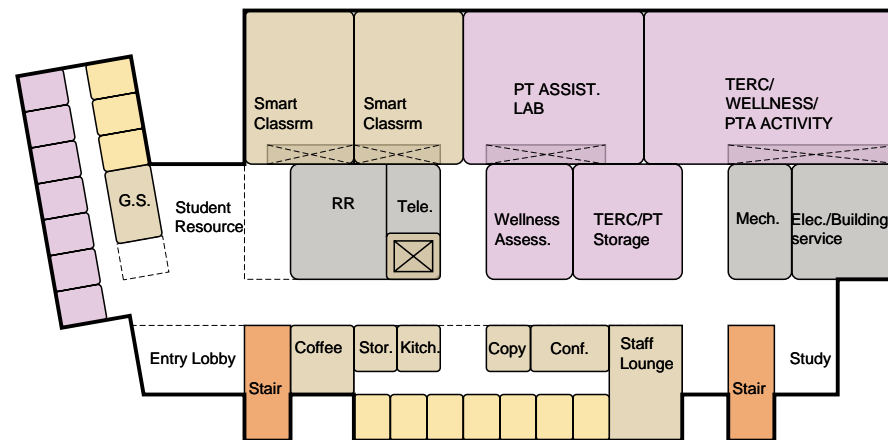
scale: 1" = 50'

SRG PARTNERSHIP INC

August 19, 2008



level 2



level 1

plan diagrams

Lane Community College

HEALTH AND WELLNESS BUILDING

Eugene, Oregon

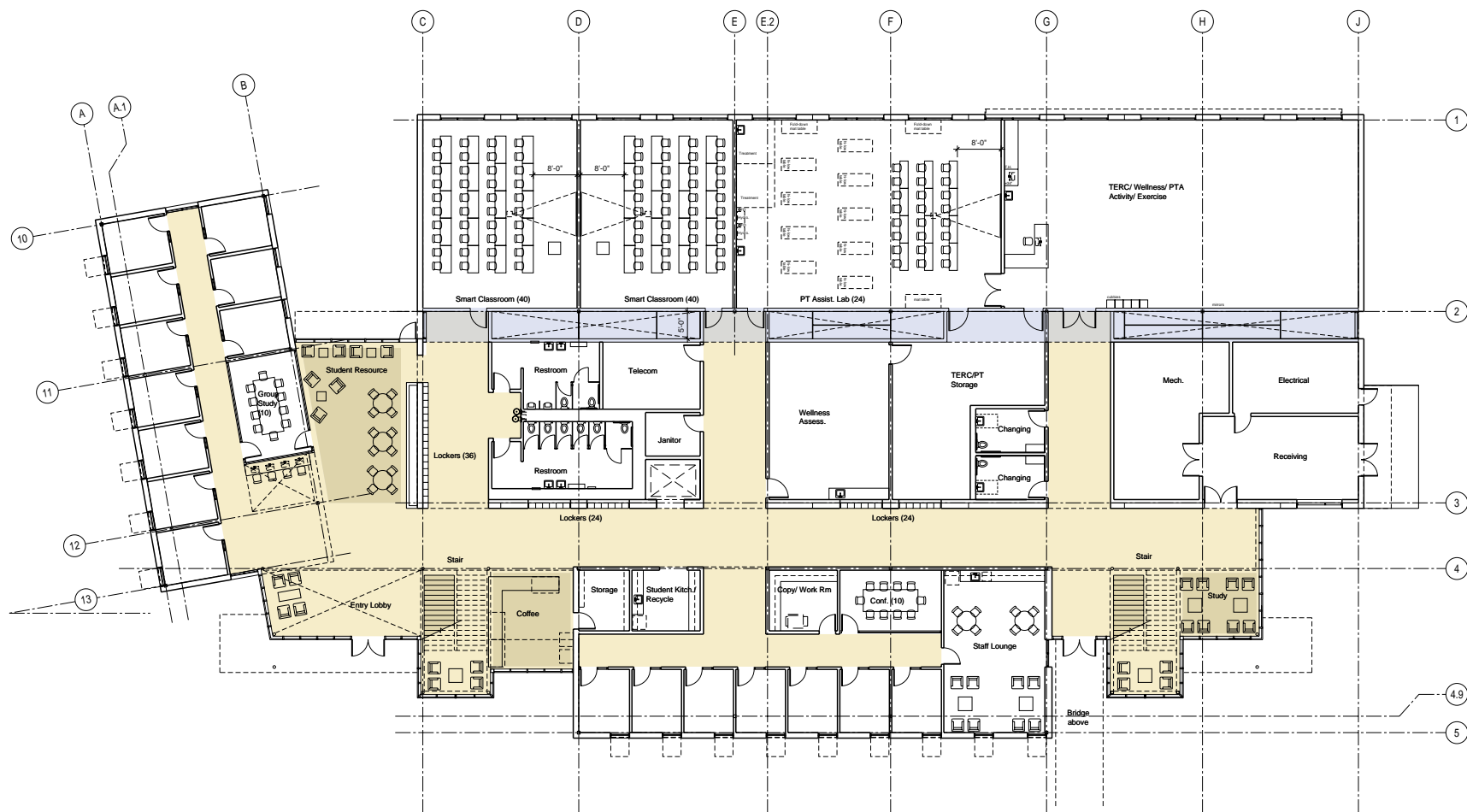


scale: 1" = 50'

SRG PARTNERSHIP INC

October 31, 2008

October 31, 2008



level 1

floor plans

Lane Community College

HEALTH AND WELLNESS BUILDING

Eugene, Oregon



scale: 1" = 30'

SRG PARTNERSHIP INC

October 31, 2008



south



west

elevations

Lane Community College

HEALTH AND WELLNESS BUILDING

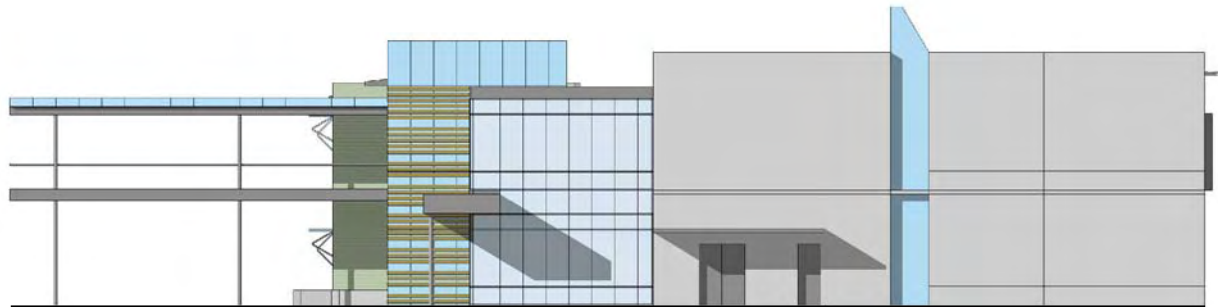
Eugene, Oregon

SRG PARTNERSHIP INC

October 31, 2008



north



east

elevations

Lane Community College

HEALTH AND WELLNESS BUILDING

Eugene, Oregon

SRG PARTNERSHIP INC

October 31, 2008



materials- interior

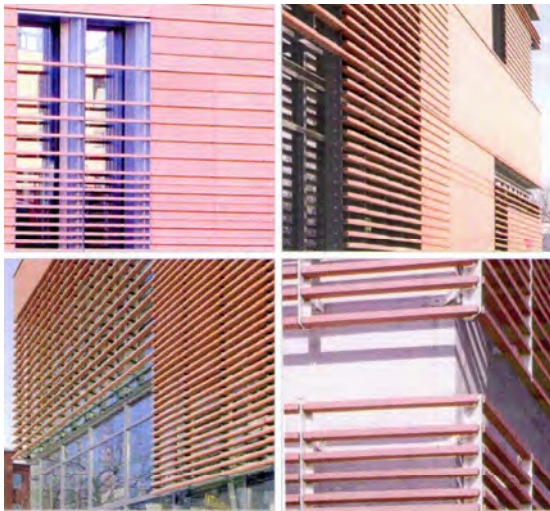
Lane Community College

HEALTH AND WELLNESS BUILDING

Eugene, Oregon

SRG PARTNERSHIP INC

October 31, 2008



materials- exterior

Lane Community College

HEALTH AND WELLNESS BUILDING

Eugene, Oregon

SRG PARTNERSHIP INC

October 31, 2008

Energy Strategies



- Generate as much energy on site as possible

Incorporate PV's and/or Solar Hot Water

- Reduce energy consumption

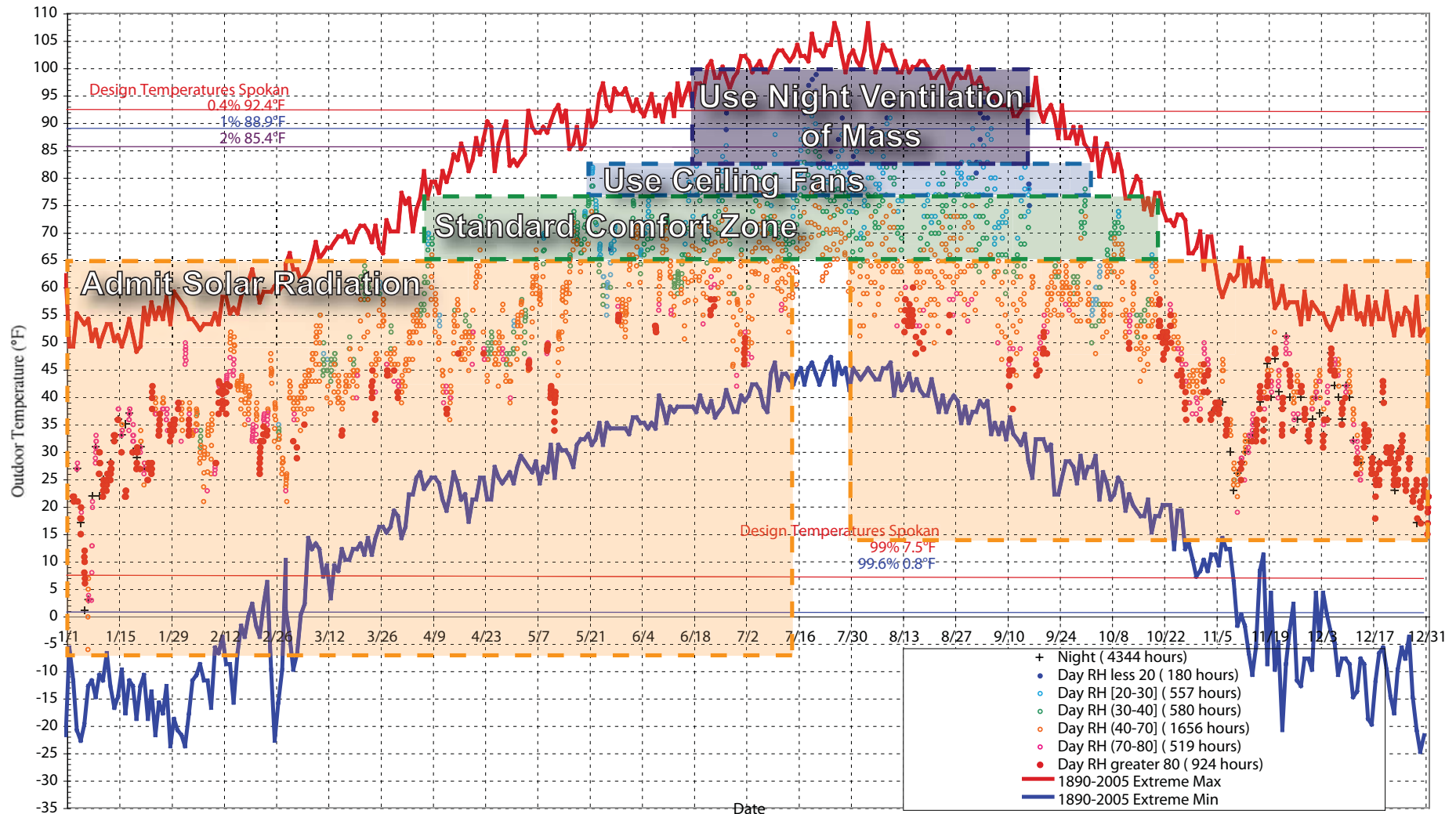
Efficient Exterior Envelope

Optimize Daylighting- Minimize Electric Loads

Use Building Mass and Night Ventilation

Heat Building through radiant panels and floors

Local Climate Data Analysis



energy

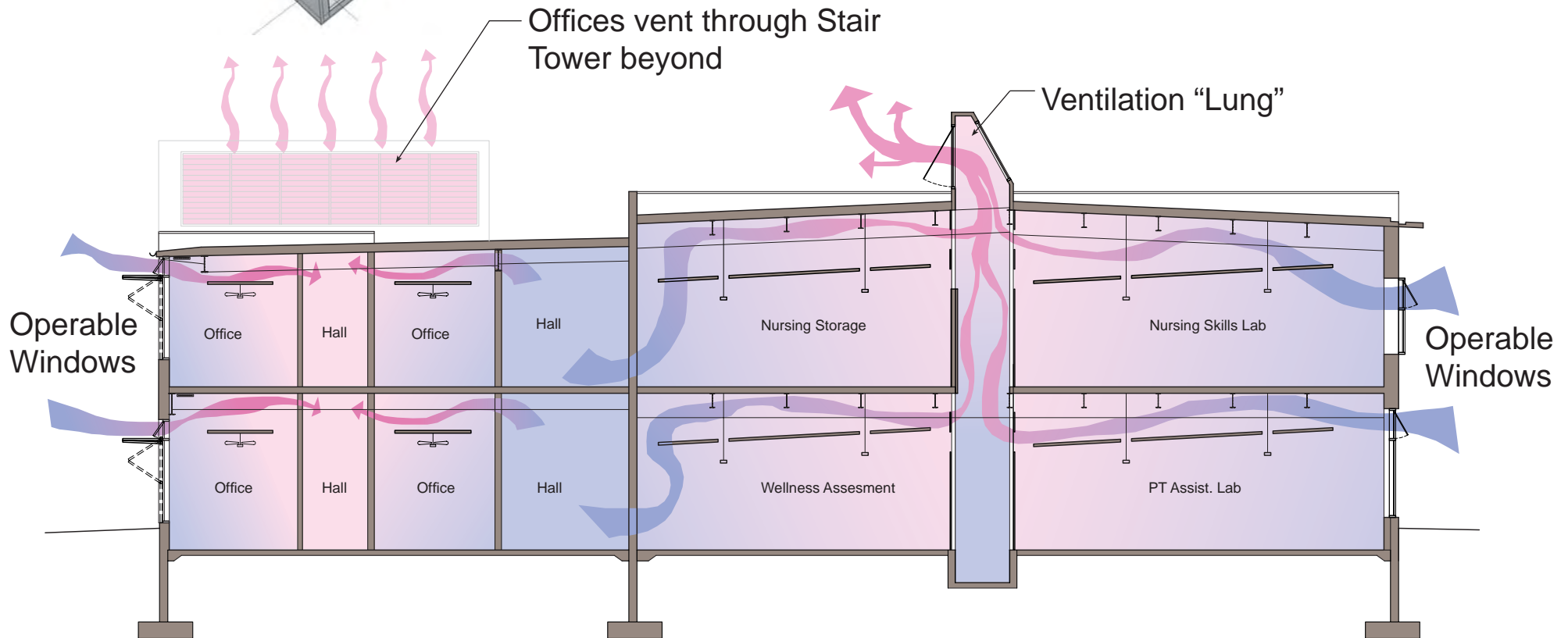
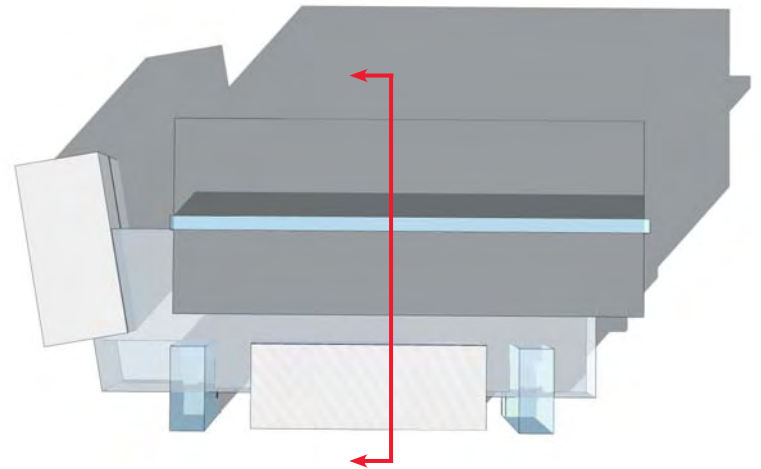
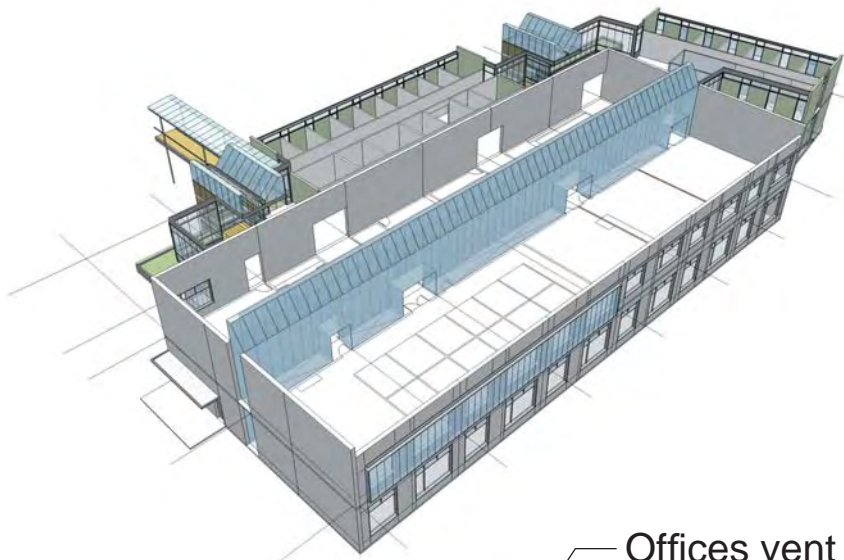
Lane Community College

HEALTH AND WELLNESS BUILDING

Eugene, Oregon

SRG PARTNERSHIP INC

November 5th, 2008



energy

Lane Community College

HEALTH AND WELLNESS BUILDING

Eugene, Oregon

SRG PARTNERSHIP INC

November 5th, 2008

Inspiration



Lane Community College

HEALTH AND WELLNESS BUILDING

Eugene, Oregon

SRG PARTNERSHIP INC

November 5th, 2008

Water Strategies



- Reduce the amount of water that is wasted

Use low flow fixtures and waterless urinals

Sensor activated faucets

Automated drip irrigation

- Filter and reduce the amount of storm water leaving the site

Explore the use of green roofs and 'living' walls

Rain gardens: Bio-retention and detention planters



conveyence the transport of stormwater from one point to another

Lane Community College

HEALTH AND WELLNESS BUILDING Eugene, Oregon

SRG PARTNERSHIP INC

GREENWORKS

October 9, 2008



detention temporarily holding back stormwater before relasing into the sewer system

Lane Community College

HEALTH AND WELLNESS BUILDING Eugene, Oregon

SRG PARTNERSHIP INC

GREENWORKS

October 9, 2008



master plan

Lane Community College

HEALTH AND WELLNESS BUILDING

Eugene, Oregon

SRG PARTNERSHIP INC

October 31, 2008



site plan

Lane Community College

HEALTH AND WELLNESS BUILDING

Eugene, Oregon

SRG PARTNERSHIP INC

October 31, 2008



entry court

Lane Community College

HEALTH AND WELLNESS BUILDING

Eugene, Oregon

SRG PARTNERSHIP INC

October 31, 2008



north pedestrian path and court

Lane Community College

HEALTH AND WELLNESS BUILDING

Eugene, Oregon

SRG PARTNERSHIP INC

October 31, 2008



model images

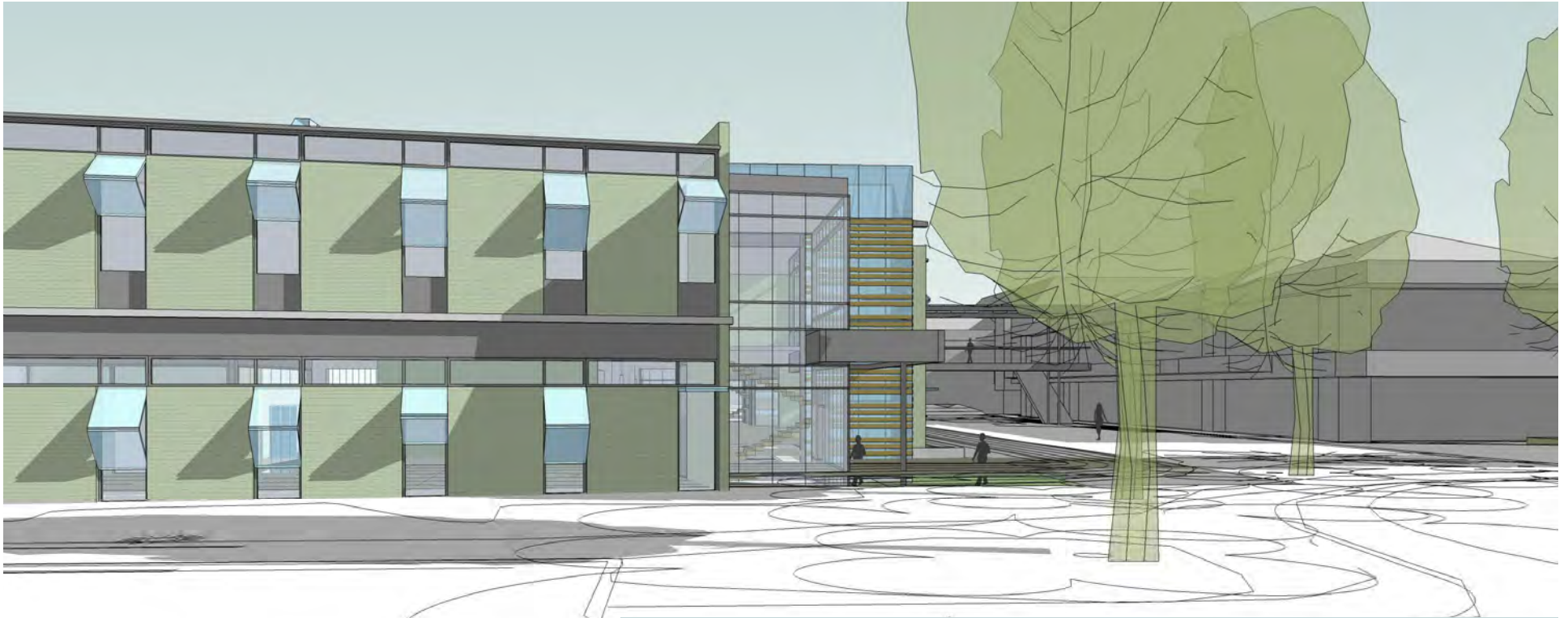
Lane Community College

HEALTH AND WELLNESS BUILDING

Eugene, Oregon

SRG PARTNERSHIP INC

October 31, 2008



model

Lane Community College

HEALTH AND WELLNESS BUILDING

Eugene, Oregon

SRG PARTNERSHIP INC

October 31, 2008



model

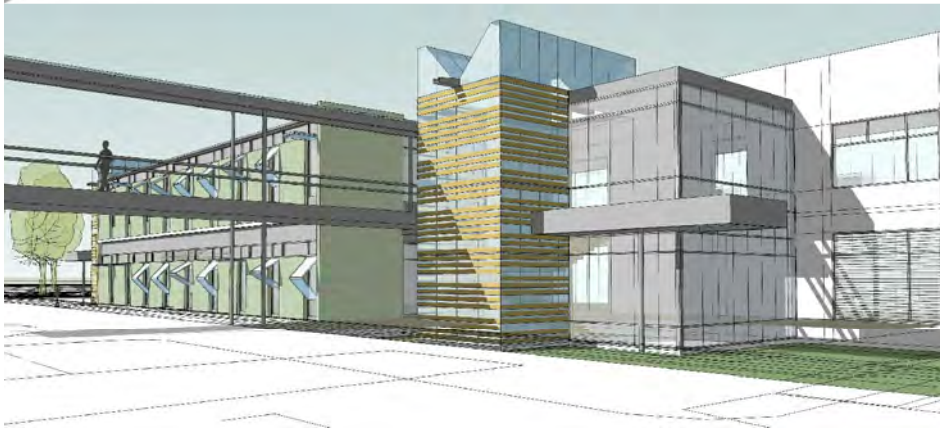
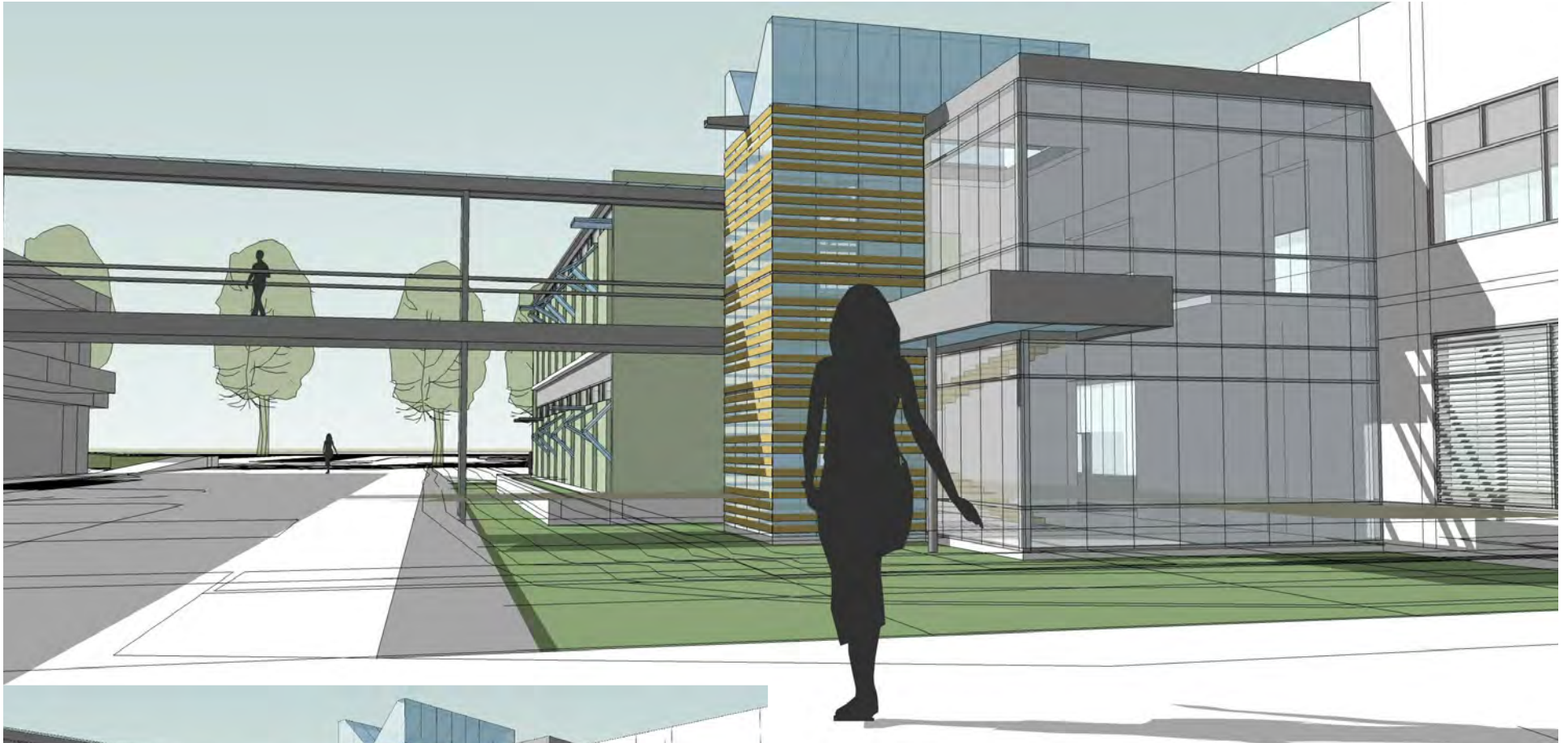
Lane Community College

HEALTH AND WELLNESS BUILDING

Eugene, Oregon

SRG PARTNERSHIP INC

October 31, 2008



model

Lane Community College

HEALTH AND WELLNESS BUILDING

Eugene, Oregon

SRG PARTNERSHIP INC

October 31, 2008